

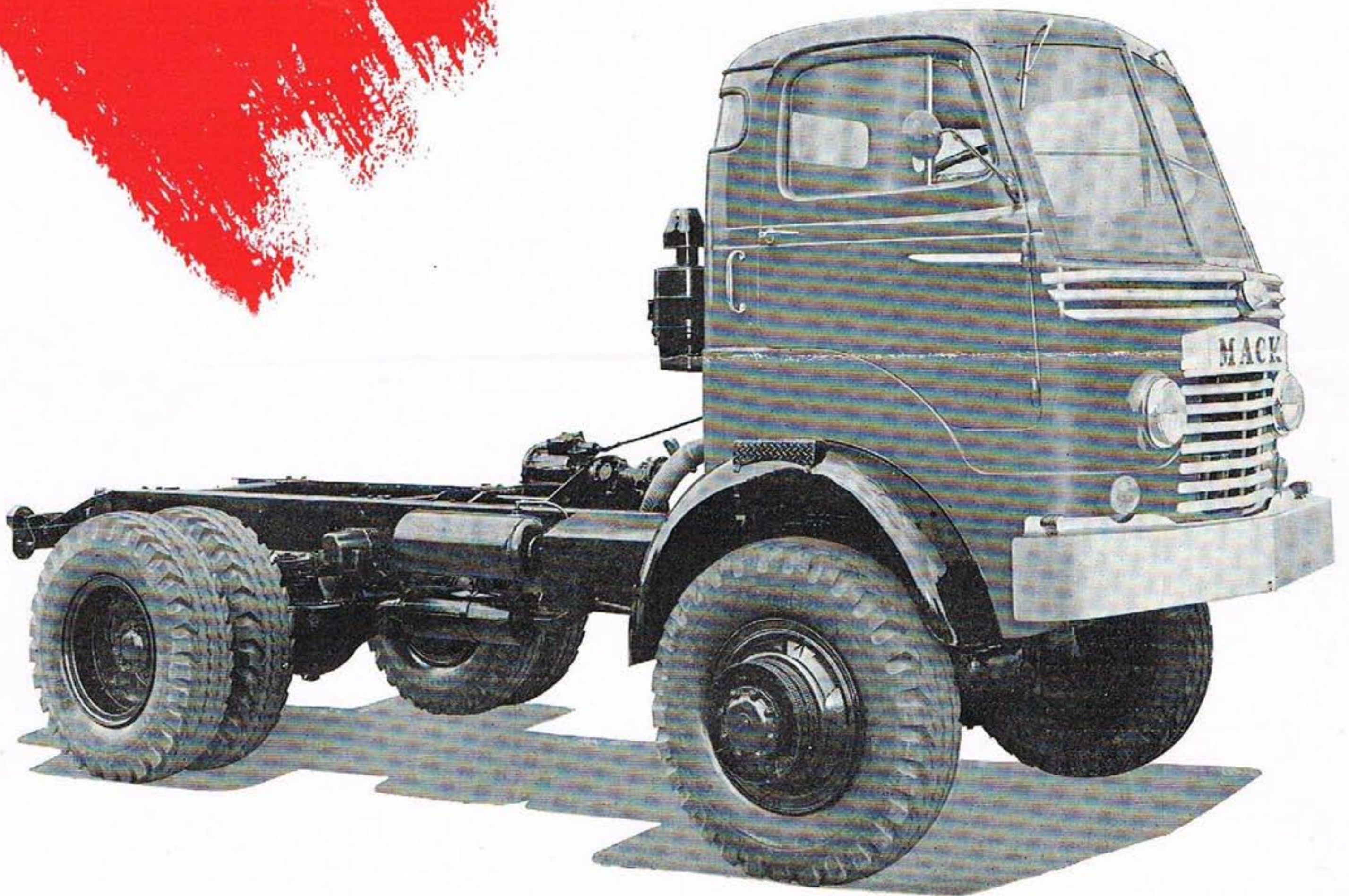
COMMERCIAL VEHICLES LTD

*Manufacturers, Stockists & Exporters of
Replacement Spare Parts for American Mack Trucks*

NORTH STREET BARKING · ESSEX

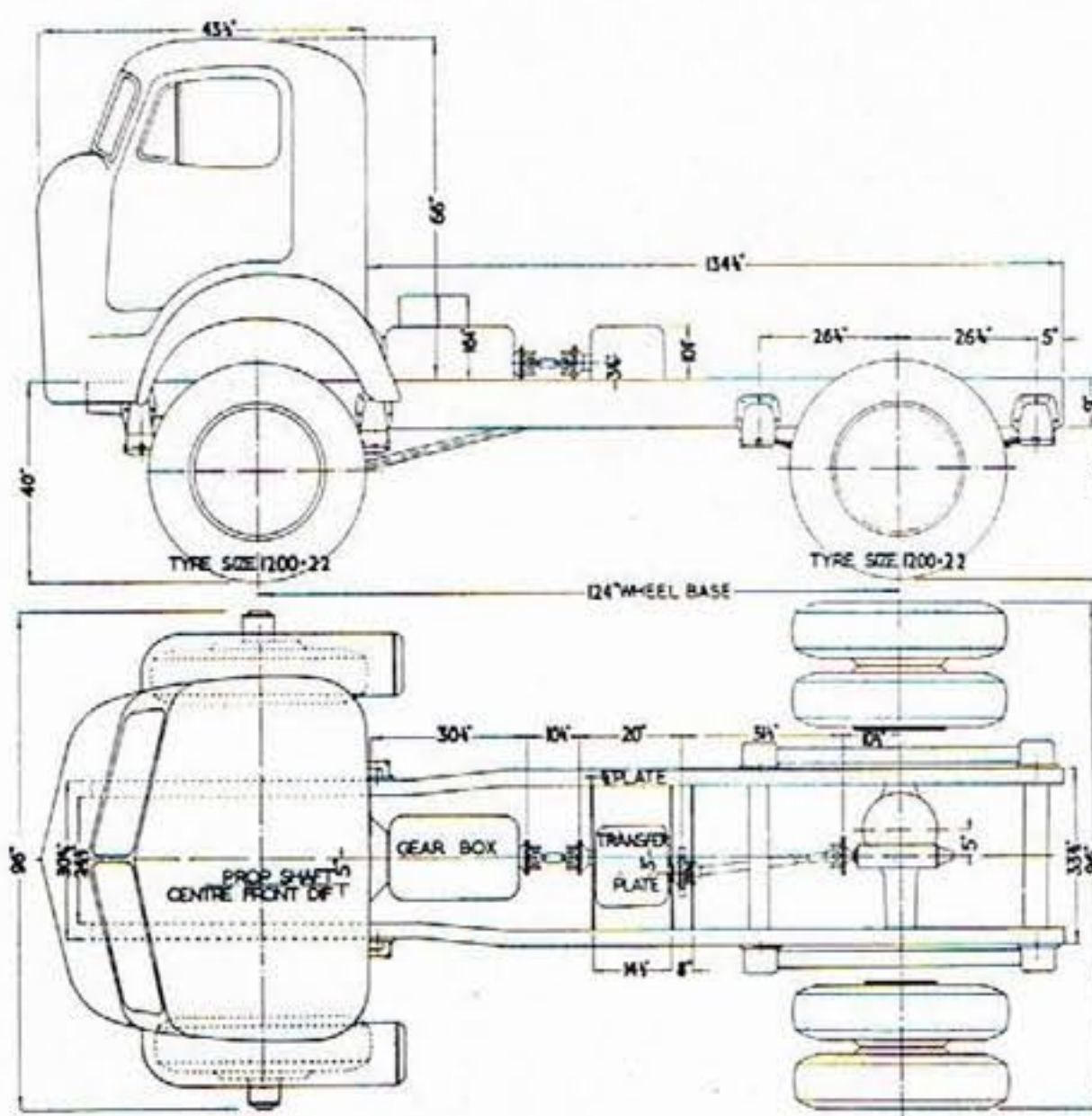
Telephone: Rippleway 1440

Cables: Maccom, Barking



MODEL PA8-125





MODEL PA8-125

WHEELBASE :—125"

ENGINE :

ModelTS. 3 DI
No. of Cylinders3 opposed
Bore and Stroke3.25" × 4"
Piston displacement cu. in. ...199
Brake horsepower @ 2400
R.P.M. (Gov.)103
Maximum torque @ 1300
R.P.M. Pound feet270
Fuel consumption38

CLUTCH :

Borg & Beck Model13 AS
TypeSingle Dry Plate
Area of engagement sq. in ...165

FUEL SYSTEM :

Fuel Injection PumpCAV Model NL3F80/96EPLB25
DriveGear Driven
MountingIndependent
NozzlesSingle Hole
Tank capacity30 Gallons
LocationN/S rear of Cab

COOLING SYSTEM :

Radiator typeContinuous Finned Flat Tubed
Frontal area sq. in.425
ThermostatControlled
Fan materialPressed Steel
Type6 Blade Symmetrical
Water capacity32 Pints

ELECTRICAL SYSTEM :

Voltage and capacity12 Volt 20 Amp
Generator, makeCAV
Starting motor, makeCAV
Battery, makeCAV 1

TRANSMISSION :

ModelT.S.R.
TypeHelical Constant Mesh 3rd and
4th speed.
Number of speedsForward 5 speeds
Reverse 1 speed

TRANSFER BOX :

ModelMT.77
Type2 speed
High speed ratio1.00 : 1
Low speed ratio2.55 : 1

DRIVE SHAFTS :

Shaft diameter3"
Wall thickness085

FRONT AXLE :

Model5D353 Dual Reduction
Final Drive7.33 : 1
Housing materialCast Steel
Axle ShaftsMaterial 2½%
Nickel Chromium Molybdenum
Steel

SPRINGS :

TypeSemi-Elliptic
Front size48½" × 4" × 3"
Rear size56" × 8" × 3½"
SuspensionRubber Shock Insulator

TYRES :

Size1100 × 20 Goodyear Road Lug

WHEELS :

TypePressed Steel Bud type

STEERING GEAR :

Model8 UHMGA 28457
TypeCam and Roller power assisted
Steering Wheel20" diameter

CAB :

ModelFCSR
TypeAll welded construction

REAR AXLE :

Model75769MT. Dual reduction
Final Drive7.33 : 1
Housing materialCast Steel
Axle ShaftMaterial 2½%
Nickel Chromium
Molybdenum Steel

BRAKES :

TypeInternal Expanding
ActuationAir
Front size17½" × 4"
Rear size17½" × 5½"
Hand Brake size16" × 4" Shoe Disc

FRAME :

MaterialPressed Carbon Steel
Side Member9" × 3" × ¼"
No. of Cross Members7
TypeChannel