



Sleeper Cab, CAS 40 shown (optional extra)

# MODEL

# F-607T

- MACK THERMODYNE DIESEL
- WEIGHTSAVING DESIGN
- CAB OVER ENGINE
- SHORT BUT ROOMY CAB
- MACK BUILT COMPONENTS

## STANDARD EQUIPMENT

<b>WHEELBASE</b> .....	128" (LP 139", CA 106")
<b>ENGINE: (Diesel)</b>	
Model (MACK).....	END 673P, Thermodyne
Type.....	Naturally aspirated, 6 cyl.
Bore and stroke.....	4 7/8" x 6"
Piston displacement, cu. in.....	672
Brake horsepower at 2100 rpm.....	187
Max. torque at 1400 rpm.....	527 lb.-ft.
Lube oil filter (12 qts.).....	Comb. full-flow by-pass
Air cleaner.....	Oil bath type
Radiator, frontal area.....	560 sq. in.
Water capacity system, qts.....	44
Fuel pump (APE).....	Multiple unit
<b>FUEL TANK</b> .....	51 gal., left side, steel, rd.
<b>ELECTRICAL SYSTEM:</b>	
Generator.....	12 Volt, 55 Amp.
Starting system.....	12 Volt
Batteries.....	(4) 6 Volt
Plates per cell.....	23
Amp. hr. @ 20 hr. rate.....	160
Group number.....	4H
<b>CLUTCH:</b>	
Model (MACK).....	CL 28
Type.....	Single-plate, dry, 14 7/8" O.D.
Area of engagement, sq. in.....	253
<b>TRANSMISSION:</b>	
Model (MACK).....	TRD 67
Type.....	Ten-speed, direct, Duplex
<b>DRIVESHAFT:</b>	
Make and size.....	Spicer, 1650, 3 1/2" O.D.
<b>FRONT AXLE:</b>	
Model (MACK).....	FA 511

Automatic radiator shutters  
Automatic reset circuit breakers  
Bumper, flush type  
Cab roof vent  
Headlights and parking lights  
Horn, electric, single tone  
L.C.E. & Marker lights  
Low air pressure indicator, buzzer

### CHASSIS EQUIPMENT

Rear view mirror, two, West Coast type  
Shock absorbers, front (direct type)  
Stop and tail light  
Sun visor, left side  
Tachometer, single hand  
Throttlestop, 170°  
Trailer conn., semi-trailer

Turn signals, front (with 4-way flasher)  
Undercoating  
Vertical exhaust  
Voltmeter  
Wheel wrench and handle  
Windshield glass, safety  
Windshield wipers, dual, air, single motor

## FOUR-WHEEL MACK DIESEL COE TRACTOR

<b>REAR AXLE:</b>	
Model (MACK).....	RAS 508
Carrier.....	CRS 84
Ratios.....	4.25, 4.63, 5.14, 5.57, 6.17, 6.83
Not available when GCW exceeds 58,000 lbs.	
<b>SPRINGS, Semi-Elliptic</b>	
	Front
Size.....	54" x 3 1/2"
Leaves, no. & thickness.....	10 @ 0.323"
	Rear
	53 3/4" x 3"
	6 @ 0.558"
	2 @ 0.499"
<b>BRAKES:</b>	
Type.....	Air
Front.....	16 1/2" x 3" x 1/2" (204 sq. in.)
Rear.....	16 1/2" x 6" x 3/4" (414 sq. in.)
Parking.....	12" x 5" x 3/8" (139 sq. ft.)
Air Compressor.....	Tu-Flo 500 (12 cu. ft.)
Air reservoir capacity.....	2235 cu. in. (approx.)
<b>WHEELS &amp; TIRES:</b>	
Wheels.....	Cast, spoke
Tires.....	10.00-20 (12P), 7.5 Rims
<b>STEERING GEAR:</b>	
Model.....	SG 261
Steering wheel diameter.....	22"
Ratio.....	28.4:1
<b>FRAME:</b>	
Size.....	9" x 3 1/4" x 1/4"
Material.....	Chrome-manganese steel, heat-treated
Section Modulus.....	9.76
Resisting bending moment.....	878,400 in. lbs. per rail
<b>CAB:</b>	
Model (MACK).....	CA 38
Type (50" BBC).....	Cab-over-engine
<b>STANDARD CHASSIS WEIGHT (LBS.):</b>	
Front 6,690; Rear 3,600; Total 10,290	

## MACK TRUCKS, INC.

# AUTOLIT



Automobile - Truck - Motorcycle 1900 to Present  
ORIGINAL Sales Brochures, Manuals, Books, Posters,  
Catalogs, and MUCH More. World's largest selection!

# OPTIONAL EQUIPMENT

# MODEL F-607T

## WHEELBASE

\*Only with RADL 515 or RADL 5153

## TRANSMISSION: (MACK)

TRD 670	9-spd., overgear, Duplex
TRD 675	10-spd., direct, Unishift
TRD 722	10-spd., direct, Duplex
TRD 7220	9-spd., overgear, Duplex
TRD 7225	10-spd., direct, Unishift
TRD 72250	9-spd., overgear, Unishift
TRT 722	15-spd., direct, Triplex
TRT 7220	13-spd., overgear, Triplex

TR 722 Series Transmission required when GCW exceeds 58,000 lbs. Overgear transmission required when GCW exceeds 73,000 lbs.

## FRONT AXLE: (MACK)

FA 514	Springs, (12) 0.323"		
FA 532	Springs, (11) 0.360"		
Springs, heavy duty	FA 511 (12) .323"	FA 514 (11) .360"	FA 532 (14) .360"

## REAR AXLE: (MACK)

Model	Carrier	Ratios
RAD 529	(CRD 117)	4.25, 4.62, 4.88, 5.43, 5.78, 6.36, 6.80
RAS 512	(CRS 84)	Same ratios as RAS 508
RAD 5291	(CRD 117)	Same ratios as RAD 529
RAD 533	(CRD 119)	4.60, 4.99, 5.52, 5.98, 6.52
RADL 515	(CRD 91)	4.39, 5.07, 5.46, 5.95, 6.45, 7.03
RADL 5153	(CRD 91)	Same ratios as RADL 515
RA2DT 518	(CR2D 101)	5.38, 7.12, 6.16-8.31
RA2DT 519	(CR2D 101)	Same ratios as RA2DT 518
Springs, heavy duty	9 @ 0.558"	

RA2DT (2-spd.) available with TR 7220 5-spd. trans.  
RAS 512 not available when GCW exceeds 58,000 lbs.  
RAD 533, RADL 515 or RADL 5153 required when GCW exceeds 72,000 lbs.

## BRAKES:

FA 514, FA 532	16 1/2" x 4" x 3/4" (276 sq. in.)
RAD 529, RADL 515	16 1/2" x 6" x 3/4" (414 sq. in.)
RAS 512, RAD 5291,	
RAD 533, RADL 5153	16 1/2" x 7" x 3/4" (476 sq. in.)
RA2DT 518	15" x 6" Stopmaster (377 sq. in.)
RA2DT 519	15" x 7" Stopmaster (440 sq. in.)

Traction, Stopmaster brakes include automatic brake adjustment.

## FRAME:

Size	10 1/2" x 3 3/4" x 1/4"
Section Modulus	11.83
Resisting bending moment	1,064,700 in. lbs. per rail

## ELECTRICAL SYSTEMS:

Starting	24 Volt
Generator	12 Volt, 55 Amp. (heavy-duty)
Alternator	12 Volt, 50 Amp. (low cut-in)
Alternator	12 Volt, 60 Amp. (heavy-duty)
Alternator	12 Volt, 85 Amp. (heavy-duty)

## CAB: (MACK)

CAS 39	Sleeper, incl. mattress (72" BBC)
CAS 40	Sleeper, incl. mattress (80" BBC)

## WHEELS & TIRES

Disc (7.5 Rims)	Alum., Hi-Tensile or Accu-Ride
(8.0 Rims)	Steel
Tires and Rims	10.00-22 (12P), 7.5 11.00-20 or 11.00-22 (12P), 8.0

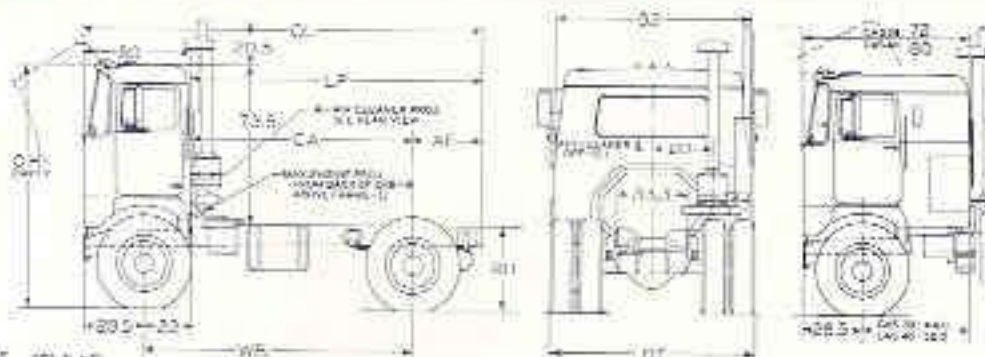
## FUEL TANKS: (gallons)

Steel, Round	51, right side
The following are in place of standard; min. WB 120"	
Steel, Round	70, one each side
Aluminum, Round	70, one each side

## CHASSIS EQUIPMENT

- |   |   |   |                                       |
|---|---|---|---------------------------------------|
| Air starting  | Exhaust brake   | Power steering  | Son visor, right side                 |
| Automatic drain valve                               | Differential Mack Power Divider for Mack Dual Reduction axles | Pyrometer   | Tachograph (RPM and/or MPH)           |
| Break-away safety valve                             | Front wheel brake limiting valve                              | Rider's seat arm rest   | Tow shackle, bumper, etc. (removable) |
| Cab air conditioning, roof mounted                  | Hand control valve  | Sleeper bunk safety strap                                       | Trailer conn., full trailer (no base) |
| Cab heater, 20,000 Btu (Std. cab)                   | Helper seal (for CA 38)                                       | Spring loaded parking brake (with or w/o rd. driveshaft brake)  | Turn signals, rear (locus)            |
| Cab heaters, two, 39,000 (total) Btu (sleeper cabs) | Horn, electric, dual tone                                     | Step for left side, round fuel tank (for access to rear of cab) | Underframe exhaust                    |
| Chrome plated grill                                 | Horn, air, twin or single                                     | Stop and tail light, extra                                      | Wig-Wag low air pressure indicator    |
| Driver's seat — Bostrom, Viking                     | Hubodometer   |   | Window (rear) in sleeper cabs         |
| T-bar, American Metal                               | Hydraulic jack 8- or 12-ton                                   |   | Windshield washers                    |
| Union-Acham, General, etc.                          |   |   |                                       |

Specifications subject to change without notice. Illustrations are not necessarily a representation of standard specifications.



F-607, (A) 13" (B) 7.1" (C) 8.5"

WB	Standard Cab		Sleeper Cab		Sleeper Cab		AF	OL	Turning Circle Dia. (Outer edge of the) (ft.)	
	CA 38	CA	CAS 39	CA	CAS 40	CA			Right	Left
128	139	106	117	84	109	76	33	189.5	49 ft.	49 ft.
110	121	89	99	66			33	171.5	44 ft.	44 ft.
135	146	113	124	91	116	83	33	196.5	51 ft.	51 ft.
143	154	121	132	99	124	91	33	204.5	53 ft.	53 ft.
156	167	134	145	112	137	104	33	217.5	57 ft.	57 ft.

Chassis dimensions are in inches and are for standard chassis unless otherwise denoted.

TIRE SIZE	OH Approx.	RH		OT
		Empty	loaded	
10.00-20	112.1	41.3	37.5	95.3
10.00-22	113.0	42.3	38.5	95.3
11.00-20	112.8	41.9	38.1	96
11.00-22	113.8	42.6	39.1	96

Frame heights are subject to variations: 1" empty, 1/2" loaded.





Steer Cab, C&D 40 Maxed (optional extra)

# MODEL

# F-607LST

- MACK THERMODYNE DIESEL
- WEIGHTSAVING DESIGN
- CAB OVER ENGINE
- SHORT BUT ROOMY CAB
- MACK BUILT COMPONENTS

## STANDARD EQUIPMENT

<b>WHEELBASE</b>	144" (LF 170"; CA 122")
<b>ENGINE:</b> (MACK Diesel)	<b>ENDL 673P, Thermodyne</b>
Type	6 Cyl., Naturally aspirated
Bore and stroke	4 5/8" x 6"
<b>Piston displacement, cu. in.</b>	<b>672</b>
<b>Brake horsepower at 2100 rpm</b>	<b>187</b>
<b>Max. torque at 1400 rpm</b>	<b>527 lb.-ft.</b>
Lube oil filter (12 qts.)	Comb. full-flow by-pass
Air cleaner	Oil bath type
Radiator, frontal area	560 sq. in.
Water capacity, qts.	44
Fuel pump (APE)	Multiple unit
<b>FUEL TANK</b>	<b>51 gal., left side, aluminum, rd.</b>
<b>ELECTRICAL SYSTEM:</b> Generator	<b>12 Volt, 55 Amp.</b>
Starting system	12 Volt
Batteries (group 470)	(4) 6 Volt
Plates per cell 23; Amp. hr. @ 20 hr. rate	160
<b>CLUTCH:</b> (MACK)	<b>CL 28</b>
Type	Single-plate, dry, 14 1/4" OD
Area of engagement	253 sq. in.
<b>TRANSMISSION</b> (MACK)	<b>TRDL 722</b>
Type	Ten-speed, direct, Duplex
<b>DRIVESHAFT:</b>	
Make and size	Spicer; 1650; 3 1/2" OD
<b>FRONT AXLE:</b> (MACK)	<b>FA 534</b>

## SIX WHEEL MACK DIESEL C.O.E. TRACTOR

<b>BOGIE:</b> (MACK)	<b>SWDL 56</b>
Carriers (Dial Reduction)	CROP 92 & CRD 93
Ratios	4.30, 4.76, 5.13, 5.73, 6.34, 7.00
<b>SPRINGS</b>	
Size	Front: 54" x 3 1/2"      Rear: 50" x 4"
Leaves, no. & thickness	10 @ 0.323"      9 @ 0.625"
<b>BRAKES:</b> Type	<b>Air</b>
Front	16 1/2" x 3" (204 sq. in.)
Rear	16 1/2" x 6" (1828 sq. in.)
Parking	12" x 5" (139 sq. in.)
Air Compressor	Tu-flo 500 (12 cu. ft.)
Air reservoir capacity	2960 cu. in. (approx.)
<b>WHEELS &amp; TIRES:</b>	
Wheels	Cast, spoke
Tires	10.00-20 (12P), 7.5 Rims
<b>STEERING GEAR:</b> Model	<b>SG 261</b>
Steering wheel diameter; ratio	22"; 28.4:1
<b>FRAME:</b> Size	<b>9" x 3 1/4" x 1/4"</b>
Material	Chrome-manganese steel, heat-treated
Section Modulus	9.76
Resisting bending moment	878,400 in. lbs. per roll
<b>CAB:</b> (MACK)	<b>CA 38</b>
Type (50.3" B&C)	Cab-over-engine
<b>STANDARD CHASSIS WEIGHT (LBS.):</b>	
Front, 6,495; Rear, 6,710; Total 13,205	

### CHASSIS EQUIPMENT

Automatic radiator shutters  
Automatic reset circuit breakers  
Bumper, fish type  
Cab rest seat  
Headlights and parking lights  
Horn, electric, single tone  
I.C.C. & Mucker lights  
Low air pressure indicator, buzzer

Rear view mirror, non-West Coast type  
Shock absorbers, front disc type  
Stop and tail light  
Sun visor, left side  
Tachometer, single hand  
Thermometer, 170°  
Trailer cone, semi-trailer

Tare signals, front (with 4-way feather)  
Underpinning  
Vertical exhaust  
Fallmeter  
Wheel wrench and handle  
Windshield glass, color  
Windshield wipers, dual, air, single motor

**ALUMINUM PARTS:** Front bumper, flywheel housing, transmission case, rear brake spiders and shifter brackets, frame brackets (engine front and rear support and spring hangers), engine front support crossmember, shock spring and housing caps, air reservoir, fuel tank.

## MACK TRUCKS, INC.

# AUTOLIT



Automobile - Truck - Motorcycle 1900 to Present  
ORIGINAL Sales Brochures, Manuals, Books, Posters,  
Catalogs, and MUCH More. World's largest selection!

**WHEELBASE** ..... 165", 186", 244"

(See dimensional chart for LF & CA)  
\*Minimum wheelbase with 5-Speed Transmission and Auxiliary

**TRANSMISSION: (MACK)**

TRDL 7220	9-spd., overgear, Duplex
TRDL 7225	10-spd., direct, Unishift
TRDL 72250	9-spd., overgear, Unishift
TRTL 722	15-spd., direct, Triplex
TRTL 7220	13-spd., overgear, Triplex
TR 7220 & BL 8035P	5-spd., overgear with 3-spd. aux.
TRQL 7220	18-spd., overgear, Quadriplex

Overgear transmission required when GCW exceeds 73,000 lbs.

**FRONT AXLE: (MACK)**

FAL 535	Springs, (12) .323"
FAL 532	Springs, (11) .360"
FA 5341, FA 5351, FA 5321	*No brakes
*Customer responsibility	
Springs, heavy duty, FA 534	(12) .323"
FAL 535	(11) .360"
FAL 532	(14) .360"

**BOGIE: (MACK)**

SWDL 561	SWDL 56	except for 7" brakes
SWDL 563	SWDL 56	Timken 6" brakes
SWDL 564	SWDL 56	Timken 7" brakes
SWDL 75	SWDL 56	Inverted Camel-back springs
SWDL 751	SWDL 75	7" brakes
SWD 75	SWDL 75	Timken 6" brakes
SWD 751	SWDL 75	Timken 7" brakes

SPRINGS (SWDL 75, SWD 75) 50" x 4", 8 leaves @ 0.625"  
Carriers and ratios same as standard

**BRAKES: (MACK)**

FAL 535, FAL 532	16 1/2" x 4" (276)
SWDL 75	16 1/2" x 6" (828)
SWDL 561, 751	16 1/2" x 7" (952)

**BRAKES: (Timken, Stopmaster)**

SWDL 563, SWD 75	15" x 6" (754)
SWDL 564, SWD 751	15" x 7" (880)

Timken brakes include automatic brake adjustment, four spring loaded, fail safe auxiliary brake units per bogie, STANDARD driveshaft brake omitted.

**FRAME: (Required for 244" WB)**

Size	10 1/2" x 3 1/4" x 1/4"
Section Modulus	11.83
Resisting bending moment	1,064,700 in. lbs. per rail

**ELECTRICAL SYSTEMS: Starting**

Alternator	12 Volt, 60 Amp. (heavy-duty)
Alternator	12 Volt, 85 Amp. (heavy-duty)

**CAB: (MACK)**

CAS 39	Sleeper, incl. mattress (72.5" BBC)
CAS 40	Sleeper, incl. mattress (80.5" BBC)

**WHEELS & TIRES**

Disc (7.5 Rims)	Alum., Hi-Tensile or Accu-Ride
(8.0 Rims)	Steel
Tires and Rims	10.00-22 (12P), 7.5 11.00-20 (12P), 8.0

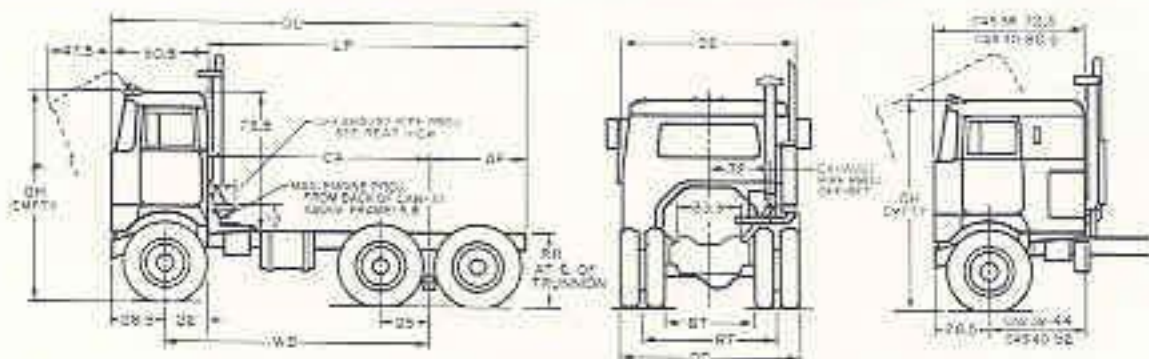
**FUEL TANKS: (gallons)**

Aluminum, Round	51, right side
The following are in place of standard:	
Aluminum, Round	70, one each side

**CHASSIS EQUIPMENT**

- |                                     |                                  |                                     |                                       |
|-------------------------------------|----------------------------------|-------------------------------------|---------------------------------------|
| Air starting                        | Driver's seat — Bostrom, Viking  | Hydraulic jack 8- or 12-ton         | Sun visor, right side                 |
| Automatic drain valve               | T bar, American Metal            | Power steering                      | Tachograph (RPM and/or MPH)           |
| Bogie spacing, 55" (SWDL 56 series) | Union-Action, General, #107      | Pyramuter                           | Tow shackle, bumper w/d.              |
| Break-away safety valve             | Exhaust brake                    | Rider's seat arm rest               | (removable)                           |
| Cab air conditioning, roof mounted  | Front wheel brake limiting valve | Sleeper bunk safety strap           | Trailer conn., full trailer (no hose) |
| Cab heater, 28,000 btu (std. cab)   | Hand control valve               | Spring loaded parking brake         | Turn signals, rear (hose)             |
| Cab heaters, two, 39,000 (total)    | Helper seat (for CA 38)          | (with or w/o std. driveshaft brake) | Underframe wipers                     |
| btu (sleeper cabs)                  | Horn, air, twin or single        | Step for left side, round fuel tank | Wig-Wag low air pressure indicator    |
| Chrome plated grill                 | Horn, electric, dual-tone        | (for access to rear of cab)         | Window (rear) in sleeper cabs         |
|                                     | Hubdameter                       | Stop and tail light, extra          | Windshield wipers                     |

Specifications subject to change without notice. Illustrations are not necessarily a representation of standard specifications.



F-607: (A) 165" (B) 186" (C) 244"

WB	Standard Cab		Sleeper Cab		Sleeper Cab		AF	GR	Turning Circle Dia. (Outer edge of tire) Ex.	
	CA 38	CA 39	CA 39	CA 40	Right	Left				
144	170	122	148	100	140	92	48	220.5	57 ft.	57 ft.
165	191	143	169	121	161	113	48	241.5	65 ft.	65 ft.
186	210	164	190	142	182	134	106	320.5	71 ft.	71 ft.
244	342	232	320	200	312	192	120	392.5	88 ft.	88 ft.

Chassis dimensions are in inches and are for standard chassis unless otherwise denoted.

TIRE SIZE	OH Approx.	RH				OT
		Empty		Loaded		
10.00-20	112.1	SWDL 56	SWDL 75	SWDL 38	SWDL 75	95.3
10.00-22	113.1	40.5	40.6	37.9	38.3	95.3
11.00-20	112.7	41.5	41.6	38.9	39.1	95.3
		41.1	41.2	38.3	38.5	96

Frame heights are subject to variations: 1/8" empty, 1/4" loaded.





Tractor Cab, CK2 41 (shown without trailer)

# MODELS

## F-609LST

## F-611LST

- MACK THERMODYNE DIESEL
- WEIGHTSAVING DESIGN
- FRONT AXLE FORWARD
- SHORT BUT ROOMY CAB
- MACK BUILT COMPONENTS

### STANDARD EQUIPMENT

**WHEELBASE** 144" (LP 170", CA 122")

ENGINE: (MACK Diesel)	F-609LST	F-611LST
Model (Thermodyne)	ENDL 711	ENDLT 673
Type (6 cyl.)	Naturally aspirated	Turbocharged
Bore and stroke	5" x 6"	4 3/4" x 6"
Piston disp., cu. in.	707	672
Brake h.p. at rpm	211 @ 2100	211 @ 2100
Max. torque at rpm	602 @ 1350	605 @ 1500
Lube oil filter (12 qts.)	Comb. full-flow by-pass	
Lube oil Cooler	Standard	
Air cleaner	Oil bath type	
Radiator, frontal area	700 sq. in.	
Water capacity, qts.	49	51
Fuel pump (APE)	Multiple unit	

**FUEL TANK** 51 gal., left side, aluminum, rd.

**ELECTRICAL SYSTEM:** Generator 12 Volt, 55 Amp.  
 Starting system 12 Volt  
 Batteries (4 H group) (4) 6 Volt  
 Plates per cell 23; Amp. hr. @ 20 hr. rate 160

**CLUTCH: (MACK)** CL 28  
 Type Single-plate, dry, 14 5/8" O.D.  
 Area of engagement, sq. in. 253

**TRANSMISSION: (MACK)** TRDL 722  
 Type Ten-speed, direct, Duplex

**DRIVESHAFT:**  
 Make and size Spicer, 1700; 3 1/2" OD

**FRONT AXLE: (MACK)** FA 534

Automatic radiator shutters  
 Automatic reset circuit breakers  
 Bumpers, front type  
 Cab roof vent  
 Headlights and parking lights  
 Horn, electric, single tone  
 I.C.C. & Marker lights  
 Low air pressure indicator, buzzer

**CHASSIS EQUIPMENT**  
 Rear-view mirror, two, West Coast type  
 Shock absorbers, front direct type  
 Stop and tail light  
 Sun visor, left side  
 Tachometer, single hand  
 Thermostat, 170°  
 Tractor cab, semi-trailer

Turn signals, front (with Away Marker)  
 Underpadding  
 Vertical exhaust  
 Valveator  
 Wheel wrench and handle  
 Windshield glass, Solar  
 Windshield wipers, dual, air, single motor

**ALUMINUM PARTS:** Front bumper, flywheel housing, transmission case, rear brake spiders and chamber brackets, frame brackets (engine front and rear support and spring hangers), engine, front support crossmember, bogie spring and bogie case, air reservoir, fuel tank.

### SIX WHEEL MACK DIESEL C.O.E. TRACTOR

**BOGIE: (MACK)** SWDL 56  
 Carriers (Dual Reduction) CRDP 92 & CRD 93  
 Ratios 4.17, 4.50, 4.76, 5.13, 5.73, 6.34, 7.00, 7.49

*Final ratios are for optional ENDL 711 (1950 rpm)*

**SPRINGS**  
 Size Front 54" x 3 1/2" Rear 50" x 4"  
 Leaves, no. & thickness 10 @ 0.323" 9 @ 0.625"

**BRAKES: Type** Air  
 Front 16 1/2" x 3" (204 sq. in.)  
 Rear 16 1/2" x 6" (828 sq. in.)  
 Parking 12" x 5" (139 sq. in.)  
 Air Compressor Tu-Flo 300 (12 cu. ft.)  
 Air reservoir capacity 2960 cu. in. (approx.)

**WHEELS & TIRES:**  
 Wheels Cast, spoke  
 Tires 10.00-20 (12P), 7.5 Rims

**STEERING GEAR: Model** SG 261  
 Steering wheel diameter, ratio 22", 28:1:1

**FRAME: Size** 9" x 3 1/4" x 1/4"  
 Material Chrome-manganese steel, heat treated  
 Section Modulus 9.76  
 Resisting bending moment 878,400 in. lbs. per rail

**CAB: (MACK)** CA 38  
 Type (50" 88C) Cab-over-engine

**STANDARD CHASSIS WEIGHT (LBS.):**  
 (F-609LST) Front 6,525; Rear 6,710; Total 13,235  
 (F-611LST) Front 6,550; Rear 6,710; Total 13,260

**MACK TRUCKS, INC.**

**AUTOLIT**



Automobile - Truck - Motorcycle 1900 to Present  
 ORIGINAL Sales Brochures, Manuals, Books, Posters,  
 Catalogs, and MUCH More. World's largest selection!

## OPTIONAL EQUIPMENT

## MODELS F-609LST & F-611LST

**WHEELBASE** ..... 165", 186", 244"

(Minimum wheelbase with 5-Speed Transmission and Auxiliary)

**ENGINE: (MACK, Diesel) (F-609)** ..... ENDDL 711

HP @ 1950 rpm (gov.) ..... 195

Max. torque @ 1350 rpm ..... 602 lb.-ft.

Note: Lube oil cooler (if omitted), intake manifold is conventional.

**ENGINE: (MACK Diesel) (F-611)** ..... ENDLT 6738

H.P. @ 2100 rpm (gov.) ..... 250

Max. torque @ 1500 rpm ..... 701

**CLUTCH: (MACK)** ..... CL 50 (with clutch brake)

Type ..... Two-plate, dry, 14" OD (416 sq. in.)

**TRANSMISSION: (MACK)**

TRDL 7220 ..... 9-spd., overgear, Duplex

TRDL 7225 ..... 10-spd., direct, Unishift

TRDL 72250 ..... 9-spd., overgear, Unishift

TRTL 722 ..... 15-spd., direct, Triplex

TRTL 7220 ..... 13-spd., overgear, Triplex

TR 7220 & BL 8035P ..... 5-spd., overgear with 3-spd. aux.

TRQL 7220 ..... 18-spd., overgear, Quadruplex

Overgear transmission required when GVW exceeds 75,000 lbs.

**FRONT AXLE: (MACK)**

FAL 535 ..... Springs, (12) 323"

FAL 532 ..... Springs, (11) 360"

FA 5341, FA 5351, FA 5321 ..... \*No brakes

\*Customer responsibility

Springs, heavy duty, FA 534 ..... FAL 535 ..... FAL 532

(12) 323" ..... (11) 360" ..... (14) 360"

**BOGIE: (MACK)**

same as except for

SWDL 561 ..... SWDL 56 ..... 7" brakes

SWDL 563 ..... SWDL 56 ..... Timken 6" brakes

SWDL 564 ..... SWDL 56 ..... Timken 7" brakes

SWDL 75 ..... SWDL 56 ..... Inverted Camel-back springs

SWDL 751 ..... SWDL 75 ..... 7" brakes

SWD 75 ..... SWDL 75 ..... Timken 6" brakes

SWD 751 ..... SWDL 75 ..... Timken 7" brakes

SPRINGS (SWDL 75, SWD 75) 50" x 4"; 8 leaves @ 0.625"

Carriers and ratios same as standard

**BRAKES: (MACK)**

FAL 535, FAL 532 ..... 16½" x 4" (276)

SWDL 75 ..... 16½" x 6" (828)

SWDL 561, 751 ..... 16½" x 7" (952)

**BRAKES: (Timken, Stopmaster)**

SWDL 563, SWD 75 ..... 15" x 6" (754)

SWDL 564, SWD 751 ..... 15" x 7" (880)

Timken brakes include automatic brake adjustment, four spring loaded, fail safe auxiliary brake units per bogie, STANDARD drive shaft brake limited.

**FRAME: (Required for 244" WB)**

Size ..... 10½" x 3¼" x ¼"

Material ..... Chrome-manganese steel, heat-treated

Section Modulus ..... 11.83

Resisting bending moment ..... 1,064,700 in. lbs. per rail

**ELECTRICAL SYSTEMS: Starting** ..... 24 Volt

Alternator ..... 12 Volt, 60 Amp. (heavy-duty)

Alternator ..... 12 Volt, 85 Amp. (heavy-duty)

**CAB: (MACK)**

CAS 39 ..... Sleeper, incl. mattress (72" BBC)

CAS 40 ..... Sleeper, incl. mattress (80" BBC)

**WHEELS & TIRES**

Disc (7.5 Rims) ..... Alum.; Hi-Tensile or Accu-Ride

(8.0 Rims) ..... Steel

Tires and Rims ..... 10.00-22 (12P), 7.5

11.00-20 (12P), 8.0

**FUEL TANKS: (gallons)**

Aluminum, Round ..... 51, right side

The following are in place of standard

Aluminum, Round ..... 70, one each side

### CHASSIS EQUIPMENT

Air starting

Automatic drain valve

Bogie spacing, 33" (SWDL 56 series)

Break-away safety valve

Cab air conditioning, roof mounted

Cab heater, 28,000 Btu (Std. cab)

Cab heaters, two 39,000

(approx. total) Btu (sleeper cabs)

Chrome plated grill

Driver's seat — Bestrac, Viking

Specifications subject to change without notice. Illustrations are not necessarily a representation of standard specifications.

T-Bar, American Metal

Union Action; General, #107

Exhaust brake

Front wheel brake bleeding valve

Hand control valve

Helper seat (for CA 38)

Horn, air, twin or single

Horn, electric, dual tone

Hubometer

Hydraulic jack 8- or 12-ton

Power steering

Pyrometer

Radiator, 1000 sq. in.

Rider's seat arm rest

Sleeper bunk safety strap

Spring loaded parking brake

(with or w/o aid, driveshaft brake)

Step, for left side, round foot tank

(for access to rear of cab)

Stop and tail light, extra

Sun visor, right side

Tachograph (RPM and/or MPH)

Tow shock, bumper m'd.

(removable)

Trailer conn., full trailer (no hole)

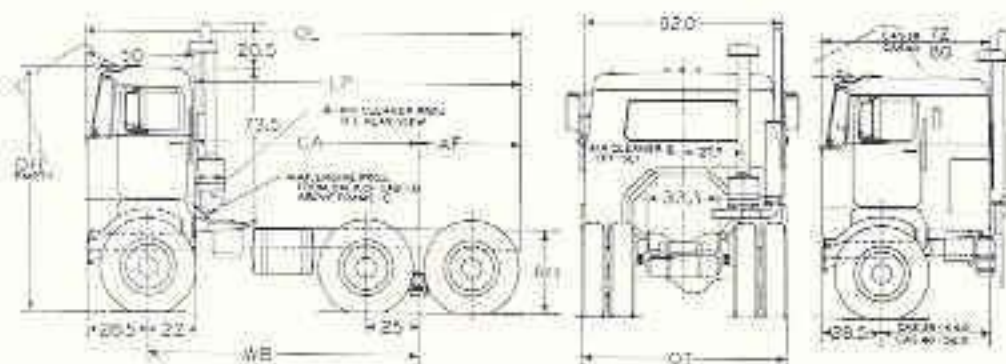
Turn signals, rear (floor)

Underframe exhaust

Wig-Wag low air pressure indicator

Window (rear) in sleeper cabs

Windshield washers



F-609, F-611: (A) 15" (B) 7.1" (C) 8.5"

WB	Standard Cab		Sleeper Cab		Sleeper Cab		AF	OL	Turning Circle Dia. (Outer edge of tire)	
	CA 38		CAS 39		CAS 40				Right	Left
	LF	CA	LF	CA	LF	CA				
144	170	122	148	100	140	92	48	220.5	57 ft.	57 ft.
165	191	143	169	121	161	113	48	241.3	65 ft.	65 ft.
186	220	164	248	142	240	134	106	320.5	71 ft.	71 ft.
244	342	222	320	200	312	192	120	392.5	88 ft.	88 ft.

TIRE SIZE	OH Approx.	BH				OT
		Empty		Loaded		
		SWDL 56	SWDL 75	SWDL 56	SWDL 75	
10.00-20	112.1	40.5	40.6	37.9	38.3	95.3
10.00-22	113.1	41.5	41.6	38.9	39.1	95.3
11.00-20	112.7	41.1	41.2	38.3	38.5	96

Chassis dimensions are in inches and are for standard chassis unless otherwise denoted.

Frame heights are subject to variations: 1" empty, ½" loaded.





sleeper Cab, CA3 40 shown (optional)

# MODEL F-685T

- MACK MAXIDYNE DIESEL
- CAB OVER ENGINE
- SHORT BUT ROOMY CAB
- MACK BUILT COMPONENTS

## STANDARD EQUIPMENT

<b>WHEELBASE</b>	128" (LP 139", CA 106")
<b>ENGINE: (MACK Diesel)</b>	ENDT 675, Maxidyne
Type	Turbocharged, 6 cyl.
Bore and stroke	4 1/4" x 6"
Piston displacement, cu. in.	672
Max. brake horsepower	237
Max. torque at 1200 rpm	906
Lube oil filter (12 qts.)	Comb. full-flow by-pass
Air cleaner	Oil bath type
Radiator, frontal area, sq. in.	1000
Water capacity, qts.	59
Thermostat, to open	170°
Fuel pump (APE)	Multiple unit
<b>FUEL TANK</b>	51 gal., left side, steel, rd.
<b>ELECTRICAL SYSTEM: Generator</b>	12 Volt, 55 Amp.
Starting system	12 Volt
Batteries (Group 4 H)	(4) 6 Volt
Plates per cell 23; Amp. hr. @ 20 hr. rate	160
<b>CLUTCH: (MACK)</b>	CL 50 (with clutch brake)
Type	Two-plate, dry, 14" O.D.
Area of engagement, sq. in.	416
<b>TRANSMISSION: (MACK)</b>	TRL 107
Type	Five-speed, Direct
<b>DRIVESHAFT:</b>	
Make and size	Spicer, 1700 Series
<b>FRONT AXLE: (MACK)</b>	FA 534

## FOUR-WHEEL DIESEL COE TRACTOR

<b>REAR AXLE: (MACK)</b>		<b>RAD 529</b>
Carrier		CRD 117
Ratios		4.00, 4.25, 4.62
<b>SPRINGS: Semi-Elliptic</b>		
	<i>Front</i>	<i>Rear</i>
Size	54" x 3 1/2"	53 3/4" x 3"
Leaves, no. & thickness	12 @ 0.323"	6 @ 0.558"
		2 @ 0.499"
<b>BRAKES: Type</b>		<b>Air</b>
Front	16 1/4" x 3" (204 sq. in.)	
Rear	16 1/2" x 6" (414 sq. in.)	
Parking	12" x 5" (139 sq. in.)	
Air Compressor	Tu-Flo 500 (12 cu. ft.)	
Air reservoir capacity	2235 cu. in. (approx.)	
<b>WHEELS &amp; TIRES:</b>		
Wheels		Cast spoke
Tires	10.00-20 (12P), 7.5 Rims	
<b>STEERING GEAR: Model</b>		<b>SG 261</b>
Steering wheel diameter, ratio		22"; 28.4:1
<b>FRAME: Size</b>		9" x 3 1/4" x 14"
Material		Chrome-manganese steel, heat-treated
Section Modulus		9.76
Resisting bending moment		678,400 in. lbs. per rail
<b>CAB: (MACK)</b>		<b>CA 38</b>
Type (30.5" BBC)		Cab-over-engine
<b>STANDARD CHASSIS WEIGHT (LBS.):</b>		
Front 6,866; Rear 3,679; Total 10,545		

### CHASSIS EQUIPMENT

Automatic radiator shutters  
Automatic over-circuit breakers  
Bumper, flush type  
Cab roof vent  
Headlights and parking lights  
Horn, electric, single tone  
I.C.C. & Marker lights  
Low air pressure indicator, buzzer

Magnetic drain plugs (TRL 107)  
Rear view mirror, two, Wheel Coat type  
Shock absorbers, front (direct type)  
Step and tail light  
Sun visor, left side  
Tachometer, single hand  
Trailer conn., sand trailer

Turn signals, front (with 4-way flasher)  
Undercoating  
Vertical exhaust  
Voltmeter  
Wheel wrench and handle  
Windshield glass, Series  
Windshield wipers, dual, air, single motor

**MACK TRUCKS, INC.**

**AUTOLIT**



Automobile - Truck - Motorcycle 1900 to Present  
ORIGINAL Sales Brochures, Manuals, Books, Posters,  
Catalogs, and MUCH More. World's largest selection!

**WHEELBASE** \*110", 135", 143", 156"

\*Only with RADL 5281, N/AW/CAS40

**FRONT AXLE: (MACK)**

FA 535	Springs, (11)	.360"	
FA 532	Springs, (13)	.360"	
Springs, optional, FA 534	(10)	.323"	
	FA 535	(12)	.323"
	FA 532	(11)	.360"
Springs, heavy duty, FA 532	(14)	.360"	

**REAR AXLE: (MACK)**

MODEL	CARRIER	RATIO
RAD 5291	CRD 117	Same as std. RAD 529
RAD 533	CRD 119	4.60
RADL 5281	CRDL 111	4.32

RAD 532 or RADL 5281 required when GCW exceeds 72,000 lbs.

**SPRINGS: (Rear)**

Heavy Duty	9 leaves @	.558"
Helper springs	8 leaves @	.291"
Size		36" x 3"

**BRAKES: (MACK)**

FA 535, FA 532	16 1/2" x 4" (276)
RAD 5291, RAD 533, RADL 5281	16 1/2" x 7" (476)

<b>FRAME: Size</b>	10 1/2" x 3 1/4" x 1 1/2"
Section Modulus	11.83
Resisting bending moment	1,064,700 in. lbs. per rail

**ELECTRICAL SYSTEMS:**

Starting	24 Volt
Alternator	12 Volt, 60 Amp. (heavy-duty)
Alternator	12 Volt, 85 Amp. (heavy-duty)

**CAB: (MACK)**

CAS 39	Sleeper, incl. mattress (72.5" BBC)
CAS 40	Sleeper, incl. mattress (80.5" BBC)

Cabs include: helper seat and arm rest, sleeping compartment curtain

**WHEELS & TIRES:**

Disc (7.5 Rims)	Aluminum or *Hi-Tensile
(8.0 Rims)	Steel
Tires and Rims	10.00-22 (12P); 7.5 11.00-20 or 11.00-22 (12P); 8.0

\*Specify Bodd or Firestone

**FUEL TANK: (gallons)**

Steel, Round	51, right side
The following are in place of standard; min. WB 138"	
Aluminum, Round	70, one each side
Steel, Round	70, one each side

**CHASSIS EQUIPMENT**

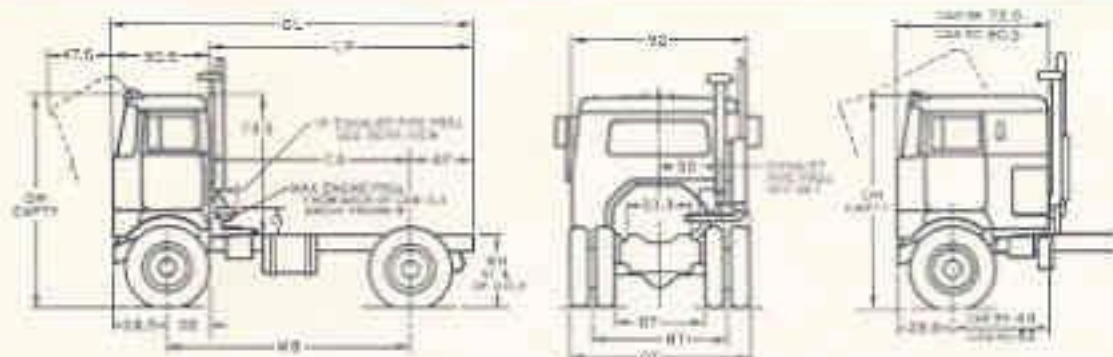
Air starting  
Automatic choke valve  
Breakaway safety valve  
Cab air conditioning, roof mounted  
Cub heater, 28,000 btu (std. cab)  
Cub heater, two, 29,000 (total)  
btu (sleeper cabs)  
Chrome plated grill  
Driver's seat — Sorenan, Vising  
Tuffy American Metal  
Union-Akation, General, #107

Engine water filter, Perry  
Exhaust brake  
Differential Mack Power Divider  
for Mack Dual Reduction axle  
Front wheel brake limiting valve  
Hand control valve  
Helper seat (for CA 38)  
Horn, electric, dual tone  
Wash, air, twin or single  
Mikadometer  
Hydraulic jack 8- or 12-ton

Power steering  
Pyrometer, exhaust  
Rider's seat arm rest (for CA 38)  
Sleeper bunk safety strap  
Spring loaded parking brake,  
incl. warning light in cab  
(with or w/o air disc/shaft brake)  
Step for left side, round fuel tank  
(for access to rear of cab)  
Stop and tell light, wire

Sun visor, right side  
Tachograph (RPM and/or MPH)  
Tow shock, bumper w/d,  
(removable)  
Trailer conn., full trailer (no hole)  
Turn signals, rear (base)  
Wig-Wag low air pressure indicator  
Window (rear) in sleeper cabs  
Windshield wipers

Specifications subject to change without notice. Illustrations are not necessarily a representation of standard specifications.



WB	Standard Cab CA 38		Sleeper Cab CAS 39		Sleeper Cab CAS 40		AF	OC	Turning Circle Dia. (Over edge of tire) ft.	
	LF	CA	LF	CA	LF	CA			Right	Left
128	129	106	117	84	109	76	33	180.5	49 ft.	49 ft.
110	121	88	99	88			33	171.5	44 ft.	44 ft.
135	146	112	124	81	116	83	33	196.5	51 ft.	51 ft.
143	154	121	132	99	126	91	33	204.5	53 ft.	53 ft.
156	167	134	145	112	137	104	33	217.5	57 ft.	57 ft.

Chassis dimensions are in inches and are for standard chassis unless otherwise specified.

TIRE SIZE	OH Approx.	RH		OT
		Empty	Loaded	
10.00-20	112.1	41.3	27.5	92.3
10.00-22	112.0	42.3	28.5	93.3
11.00-20	112.6	41.8	28.1	96
11.00-22	113.6	43.8	29.1	98

Frame heights are subject to variations: 1" empty, 1 1/2" loaded.







Steerer Cab, CAX 40 (base optional)

# MODEL F-685LT

- MACK MAXIDYNE DIESEL
- CAB OVER ENGINE
- SHORT BUT ROOMY CAB
- MACK BUILT COMPONENTS
- WEIGHTSAVING DESIGN

## STANDARD EQUIPMENT

<b>WHEELBASE</b>	128" (LF 139"; CA 106")
<b>ENGINE: (MACK Diesel)</b>	ENDT 675, Maxidyne
Type	Turbocharged, 6 cyl.
Bore and stroke	4 7/8" x 6"
Piston displacement, cu. in.	672
Max. brake horsepower	237
Max. torque at 1200 rpm	906
Lube oil filter (12 qts.)	Comb. full-flow by-pass
Air cleaner	Oil bath type
Radiator, frontal area, sq. in.	1000
Water capacity, qts.	59
Thermostat, to open	170°
Fuel pump (APE)	Multiple unit
<b>FUEL TANK</b>	51 gal., left side, alum. rd.
<b>ELECTRICAL SYSTEM: Generator</b>	12 Volt, 55 Amp.
Starting system	12 Volt
Batteries (Group 4 H)	(4) 6 Volt
Plates per cell 23; Amp. hr. @ 20 hr. rate	160
<b>CLUTCH: (MACK)</b>	CL 50 (with clutch brake)
Type	Two-plate, dry, 14" O.D.
Area of engagement, sq. in.	416
<b>TRANSMISSION: (MACK)</b>	TRL 107
Type	Five-speed, Direct
<b>DRIVESHAFT:</b>	
Make and size	Spicer, 1700 Series
<b>FRONT AXLE: (MACK)</b>	FA 534

## FOUR-WHEEL DIESEL COE TRACTOR

<b>REAR AXLE: (MACK)</b>		<b>RADL 529</b>
Carrier		CRD 117
Ratios		4.00, 4.25, 4.62
<b>SPRINGS: Semi-Elliptic</b>		
Size	Front 54" x 3 1/2"	Rear 53 1/2" x 3"
Leaves, no. & thickness	12 @ 0.323"	6 @ 0.558"
		2 @ 0.499"
<b>BRAKES: Type</b>		<b>Air</b>
Front	16 1/4" x 3" (204 sq. in.)	
Rear	16 1/2" x 6" (414 sq. in.)	
Parking	12" x 5" (139 sq. in.)	
Air Compressor	Tu-Flo 500 (12 cu. ft.)	
Air reservoir capacity	2235 cu. in. (approx.)	
<b>WHEELS &amp; TIRES:</b>		
Wheels		Cast spoke
Tires	10.00-20 (12P), 7.5 Rims	
<b>STEERING GEAR: Model</b>		<b>5G 261</b>
Steering wheel diameter, ratio		22"; 28.4:1
<b>FRAME: Size</b>		9" x 3 1/2" x 1 1/4"
Material	Chrome-manganese steel, heat-treated	
Section Modulus		9.76
Resisting bending moment		878,400 in. lbs. per rail
<b>CAB: (MACK)</b>		<b>CA 38</b>
Type (50.5" BBC)		Cab-over-engine
<b>STANDARD CHASSIS WEIGHT (LBS.):</b>		
Front 6,645; Rear 3,620; Total 10,265		

### CHASSIS EQUIPMENT

Automatic radiator shutters  
Automatic reset circuit breakers  
Bumper, Rush type  
Cab roof vent  
Headlights and parking lights  
Horn, electric, single tone  
I.C.C. & Marker lights  
Low air pressure indicator, buzzer

Magnetic drain plugs (TR 107)  
Rear view mirror, two, West Coast type  
Shock absorbers, front (direct type)  
Stop and tail light  
Sun visor, left side  
Tachometer, single head  
Trailer cone, semi-trailer

Turn signals, front (with 4-way flasher)  
Undercoating  
Vertical exhaust  
Valveator  
Wheel wrench and handle  
Windshield glass, Seles  
Windshield wipers, dual, air, single motor

**ALUMINUM PARTS:** Front bumper; transmission case; rear brake spiders, shoes and chamber brackets; frame brackets except rear (hangars); engine front support crossmember; air reservoir; fuel tank.  
Front axle (optional FA1 525, FA2 522) brake spiders, shoes and chamber brackets.

**MACK TRUCKS, INC.**

**AUTOLIT**



Automobile - Truck - Motorcycle 1900 to Present  
ORIGINAL Sales Brochures, Manuals, Books, Posters,  
Catalogs, and MUCH More. World's largest selection!

**WHEELBASE** ..... \*110", 135", 143", 156"

\*Only with RADL 5281, N/AW/CAS40

**FRONT AXLE: (MACK)**

FAL 535	Springs, (11)	.360"
FAL 532	Springs, (13)	.360"
Springs, optional, FA 534	(10)	.323"
FAL 535	(12)	.323"
FAL 532	(11)	.360"
Springs, heavy duty, FAL 532	(14)	.360"

**REAR AXLE: (MACK)**

Model	CARRIER	RATIO
RADL 5291	CRD 117	Same as std. RADL 529
RADL 533	CRD 119	4.60
RADL 5281	CRDL 111	4.32

RADL 533 or RADL 5281 required when GCW exceeds 72,000 lbs.

**SPRINGS: (Rear)**

Heavy Duty	9 leaves @	.558"
Helper springs	8 leaves @	.291"
Size		36" x 3"

**BRAKES: (MACK)**

FAL 535, FAL 532	16 1/2" x 4" (276)
RADL 5291, RADL 533, RADL 5281	16 1/2" x 7" (476)

**FRAME: Size** ..... 10 1/2" x 3 1/2" x 1 1/2"  
**Section Modulus** ..... 11.83  
**Resisting bending moment** ..... 1,064,700 in. lbs. per rail

**ELECTRICAL SYSTEMS:**

Starting	24 Volt
Alternator	12 Volt, 60 Amp. (heavy-duty)
Alternator	12 Volt, 85 Amp. (heavy-duty)

**CAB: (MACK)**

CAS 39	Sleeper, incl. mattress (72.5" BBC)
CAS 40	Sleeper, incl. mattress (80.5" BBC)

Cab includes: Rubber seat and arm rest; sleeping compartment curtain

**WHEELS & TIRES:**

Disc (7.5 Rims)	Aluminum or *HS-Tensile
(8.0 Rims)	Steel
Tires and Rims	10.00-22 (13P); 7.5
	11.00-20 or 11.00-22 (12P); 8.0

\*Specify Build or Firstwear

**FUEL TANK: (gallons)**

Aluminum, Round	51, right side
The following are in place of standard; min. WS 128"	
Aluminum, Round	70, one each side

**CHASSIS EQUIPMENT**

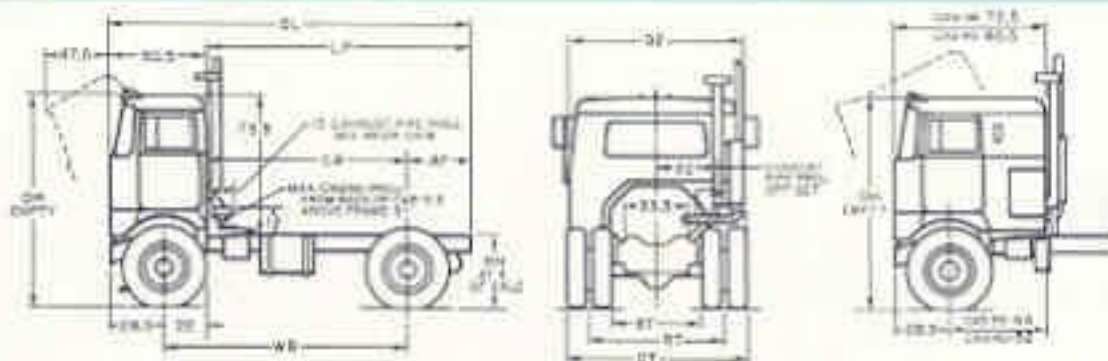
Air starting  
 Automatic drain valve  
 Break-away safety valve  
 Cab air conditioning, roof mounted  
 Cab heater, 28,000 Btu (std. cab)  
 Cab heaters, Inc. 29,000 (total)  
 Btu (sleeper cabs)  
 Chrome plated grill  
 Driver's seat — Sashco, Viking  
 T-bar, American Metal  
 Union Action General, #102

Engine water filter, Pury  
 Exhaust brake  
 Differential Lock Power Divider  
 for Mack Dual Deflection axles  
 Front wheel brake locking valve  
 Hand control valve  
 Helper seat (for CA 38)  
 Horn, electric, dual tone  
 Horn, air, twin or single  
 Hubometer

Hydraulic jack 8- or 12-ton  
 Power steering  
 Pyrometer, exhaust  
 Rider's seat arm rest (for CA 38)  
 Sleeper bunk safety strap  
 Spring loaded parking brake,  
 incl. warning light in cab  
 (with or w/o std. disc/shaft brake)  
 Step for left side, round fuel tank  
 (for access to roof of cab)

Stop and tail light, extra  
 Sun visor, right side  
 Tachograph (RPM and/or MPH)  
 Tow shock, bumper with  
 (removable)  
 Trailer conn., full trailer (no base)  
 Turn signals, rear (base)  
 Wig-Wag low air pressure indicator  
 Window (case) in sleeper cab  
 Windshield washers

Specifications subject to change without notice. Illustrations are not necessarily a representation of standard specifications.



WB	Standard Cab CA 38		Sleeper Cab CAS 39		Sleeper Cab CAS 40		AF	OL	Turning Circle Dia. (Outer edge of tire)	
	LP	CA	LP	CA	LP	CA			Right	Left
126	129	106	117	84	109	76	33	189.5	49 ft.	49 ft.
110	121	88	99	66			33	177.5	44 ft.	44 ft.
135	146	119	124	91	116	85	33	198.5	51 ft.	51 ft.
143	154	131	132	99	124	91	33	204.5	50 ft.	50 ft.
166	167	134	145	112	137	104	33	217.5	57 ft.	57 ft.

Chassis dimensions are in inches and are for standard chassis unless otherwise denoted.

TIRE SIZE	OH Approx.	BH		OT
		Empty	Loaded	
10.00-20	112.1	47.5	37.5	95.3
10.00-22	112.0	42.3	38.5	95.3
11.00-20	112.4	41.9	38.1	96
11.00-22	113.6	42.8	39.1	96

Frame heights are subject to variations: 1" empty, 1/2" loaded





Shaper Cab, CAS 40 doors (optional)

# MODEL

# F-685ST

- MACK MAXIDYNE DIESEL
- CAB OVER ENGINE
- SHORT BUT ROOMY CAB
- MACK BUILT COMPONENTS

## STANDARD EQUIPMENT

<b>WHEELBASE</b>	144" (LP 170"; CA 122")
<b>ENGINE:</b> (MACK Diesel)	ENDT 675, Maxidyne
Type	Turbocharged, 6 cyl.
Bore and stroke	4 1/8" x 6"
Piston displacement, cu. in.	672
Max. brake horsepower	237
Max. torque at 1200 rpm	906
Lube oil filter (12 qts.)	Comb. full-flow by-pass
Air cleaner	Oil bath type
Radiator, frontal area, sq. in.	1000
Water capacity, qts.	59
Thermostat, to open	170°
Fuel pump (APE)	Multiple unit
<b>FUEL TANK</b>	51 gal., left side, steel, rd.
<b>ELECTRICAL SYSTEM:</b> Generator	12 Volt, 55 Amp.
Starting system	12 Volt
Batteries (Group 4 H)	(4) 6 Volt
Plates per cell 23; Amp. hr. @ 20 hr. rate	160
<b>CLUTCH:</b> (MACK)	CL 50 (with clutch brake)
Type	Two-plate, dry, 14" O.D.
Area of engagement	416 sq. in.
<b>TRANSMISSION:</b> (MACK)	TRL 107
Type	Five-speed, Direct
<b>DRIVESHAFT:</b>	
Make and size	Spicer, 1700 Series
<b>FRONT AXLE:</b> (MACK)	FA 534

## SIX WHEEL MACK DIESEL C.O.E. TRACTOR

<b>BOGIE:</b> (MACK)	SWDL 56	
Carrier (Dual Reduction)	CRDLP 92 & CRDL 93	
Ratios	4.17, 4.50	
<b>SPRINGS:</b>	Front	Rear
Size	54" x 3 1/2"	50" x 4"
Leaves, no. & thickness	12 @ 0.323"	9 @ 0.625"
<b>BRAKES:</b> Type	Air	
Front	16 1/4" x 3" (204 sq. in.)	
Rear	16 1/4" x 6" (828 sq. in.)	
Parking	12" x 5" (139 sq. in.)	
Air Compressor	Tu-Flu 500 (12 cu. ft.)	
Air reservoir capacity	2960 cu. in. (approx.)	
<b>WHEELS &amp; TIRES:</b>		
Wheels	Cast spoke	
Tires	10.00-20 (12P), 7.5 Rims	
<b>STEERING GEAR:</b> Model	5G 261	
Steering wheel diameter; ratio	22"; 28:1	
<b>FRAME:</b> Size	9" x 3 1/4" x 14"	
Material	Chrome-manganese steel, heat-treated	
Section Modulus	9.76	
Resisting bending moment	878,400 in. lbs. per roll	
<b>CAB:</b> (MACK)	CA 38	
Type (50.5" BBC)	Cab-over-engine	
<b>STANDARD CHASSIS WEIGHT (LBS.)</b>		
Front, 6,831; Rear, 6,819; Total, 13,650		

### CHASSIS EQUIPMENT

Automatic radiator shutters  
Automatic reset circuit breakers  
Bumper, flush type  
Cab roof vent  
Headlights and parking lights  
Horn, electric, single tone  
L.C.C. & Marker lights  
Low air pressure indicator, buzzer

Magnetic drain plugs (TRL 107)  
Rear view mirror, two, West Coast type  
Shock absorbers, front (direct type)  
Stop and tail light  
Sun visor, left side  
Tachometer, single hand  
Trailer conn., semi-trailer

Tyre signals, front (with 4-way flasher)  
Undersealing  
Vertical exhaust  
Voltmeter  
Wheel wrench and handle  
Windshield glass, Solex  
Windshield wipers, dual, air, single motor

## MACK TRUCKS, INC.

# AUTOLIT



Automobile - Truck - Motorcycle 1900 to Present  
ORIGINAL Sales Brochures, Manuals, Books, Posters,  
Catalogs, and MUCH More. World's largest selection!





Sleeper Cab, CA5 48 shown (optional)

# MODEL

# F-685LST

- MACK MAXIDYNE DIESEL
- CAB OVER ENGINE
- SHORT BUT ROOMY CAB
- MACK BUILT COMPONENTS
- WEIGHTSAVING DESIGN

## STANDARD EQUIPMENT

<b>WHEELBASE</b>	144" (LP 170"; CA 122")
<b>ENGINE:</b> (MACK Diesel)	ENDT 675, Maxidyne
Type	Turbocharged, 6 cyl.
Born and stroke	4 1/4" x 6"
Piston displacement, cu. in.	672
Max. brake horsepower	237
Max. torque at 1200 rpm	906
Lube oil filter (12 qts.)	Comb. full-flow by-pass
Air cleaner	Oil bath type
Radiator, frontal area, sq. in.	1000
Water capacity, qts.	59
Thermostat, to open	170°
Fuel pump (APE)	Multiple unit
<b>FUEL TANK</b>	51 gal., left side, Alum., rd.
<b>ELECTRICAL SYSTEM:</b> Generator	12 Volt, 55 Amp.
Starting system	12 Volt
Batteries (Group 4 H)	(4) 6 Volt
Plates per cell 23; Amp. hr. @ 20 hr. rate	160
<b>CLUTCH:</b> (MACK)	CL 50 (with clutch brake)
Type	Two-plate, dry, 14" O.D.
Area of engagement	416 sq. in.
<b>TRANSMISSION:</b> (MACK)	TRL 107
Type	Five-speed, Direct
<b>DRIVESHAFT:</b>	
Make and size	Spicer; 1700 Series
<b>FRONT AXLE:</b> (MACK)	FA 534

## SIX WHEEL MACK DIESEL C.O.E. TRACTOR

<b>BOGIE:</b> (MACK)		<b>SWDL 56</b>
Carrier (Dual Reduction)		CRDL 92 & CRDL 93
Ratios		4.17, 4.50
<b>SPRINGS:</b>		
	<i>Front</i>	<i>Rear</i>
Size	54" x 3 1/2"	50" x 4"
Leaves, no. & thickness	12 @ 0.323"	9 @ 0.625"
<b>BRAKES:</b> Type		<b>Air</b>
Front	16 1/4" x 3" (204 sq. in.)	
Rear	16 1/2" x 6" (828 sq. in.)	
Parking	12" x 5" (129 sq. in.)	
Air Compressor	Tu-Flo 500 (12 cu. ft.)	
Air reservoir capacity	2960 cu. in. (approx.)	
<b>WHEELS &amp; TIRES:</b>		
Wheels		Cast spoke
Tires	10.00-20 (12P), 7.5 Rims	
<b>STEERING GEAR:</b> Model		<b>SG 261</b>
Steering wheel diameter; ratio		22"; 28.4:1
<b>FRAME:</b> Size		9" x 3 1/4" x 1/4"
Material		Chrome-manganese steel, heat-treated
Section Modulus		9.76
Resisting bending moment		878,400 in. lbs. per roll
<b>CAB:</b> (MACK)		<b>CA 38</b>
Type (50.5" SSC)		Cab-over-engine
<b>STANDARD CHASSIS WEIGHT (LBS.):</b>		
Front, 6,662; Rear, 6,723; Total, 13,385		

### CHASSIS EQUIPMENT

Automatic radiator shutters  
Automatic reset circuit breakers  
Bumper, both type  
Cab roof vent  
Headlights and parking lights  
Horn, electric, single tone  
I.C.C. & Marker lights  
Low air pressure indicator, buzzer

Magnetic drain plugs (TRL 107)  
Rear view mirror, two, Wind Coat type  
Shock absorbers, front (oilrod type)  
Stop and tail light  
Sun visor, left side  
Tachometer, single head  
Trailer cone, semi-trailer

Turn signals, front (with Away Flasher)  
Undercoating  
Vertical exhaust  
Voltmeter  
Wheel track and handle  
Windshield glass, Sales  
Windshield wipers, dual, air, single motor

**ALUMINUM PARTS:** Front bumper; transmission case; rear brake spiders, shoes and chamber brackets; frame brackets (engine front and rear support and spring hangers); engine front support straddle; bogie spring and housing; stop air reservoir; fuel tank.  
Front axle (optional FA1 535, FA1 532) brake spiders, shoes and chamber brackets.

## MACK TRUCKS, INC.

# AUTOLIT



Automobile - Truck - Motorcycle 1900 to Present  
ORIGINAL Sales Brochures, Manuals, Books, Posters,  
Catalogs, and MUCH More. World's largest selection!

**WHEELBASE** 165", 186", 244"

(See dimensional chart for LP & CA)

**FRONT AXLE: (MACK)**

FAL 535	Springs, (11) .360"
FAL 532	Springs, (13) .360"
FA 5341, FA 5351, FA 5321	*No brakes
*Customer responsibility	
Springs, optional, FA 534	(10) .323"
FAL 535	(12) .323"
FAL 532	(11) .360"
Springs, heavy duty, FAL 532	(14) .360"

**BOGIE: (MACK)**

SWDL 561	SWDL 56	7" brakes
SWDL 563	SWDL 56	Rockwell-Standard 6" brakes
SWDL 564	SWDL 56	Rockwell-Standard 7" brakes
SWDL 75	SWDL 56	Inverted Camel-back springs
SWDL 751	SWDL 75	7" brakes
SWD 75	SWDL 75	Rockwell-Standard 6" brakes
SWD 751	SWDL 75	Rockwell-Standard 7" brakes
SPRINGS (SWDL 75, SWD 75) 50" x 4", 8 leaves @ 0.625"		
Opt.—Hvy. Duty Spr. SWDL 56 Series (50" x 4", 8 leaves @ 0.625")		
Carriers and ratios same as standard		

**BRAKES: (MACK)**

FAL 535, FAL 532	16 1/2" x 4" (276)
SWDL 75	16 1/2" x 6" (828)
SWDL 561, 751	16 1/2" x 7" (952)

**BRAKES: (Rockwell-Standard, Stopmaster)**

SWDL 563, SWD 75	15" x 6" (754)
SWDL 564, SWD 751	15" x 7" (880)

Rockwell-Standard brakes include automatic brake adjustment, four spring loaded, fail safe auxiliary brake units per bogie. STANDARD driveshaft brake omitted.

**FRAME: (Required for 244" WB)**

Size	10 1/2" x 3 1/4" x 1 1/4"
Section Modulus	11.83
Resisting bending moment	1,064,700 in. lbs. per rail

**ELECTRICAL SYSTEMS:**

Starting	24 Volt
Alternator	12 Volt, 60 Amp. (heavy-duty)
Alternator	12 Volt, 85 Amp. (heavy-duty)

**CAB: (MACK)**

CAS 39	Sleeper, incl. mattress (72.5" B8C)
CAS 40	Sleeper, incl. mattress (80.5" B8C)

Cabs include: Kelpier seat and arm rest; sleeping compartment curtain

**WHEELS & TIRES**

Disc (7.5 Rims)	Aluminum or *Hi-Tensile Steel
Tires and Rims	10.00-22 (12P), 7.5 11.00-20 (12P), 8.0

\*Specify Build or Firestone

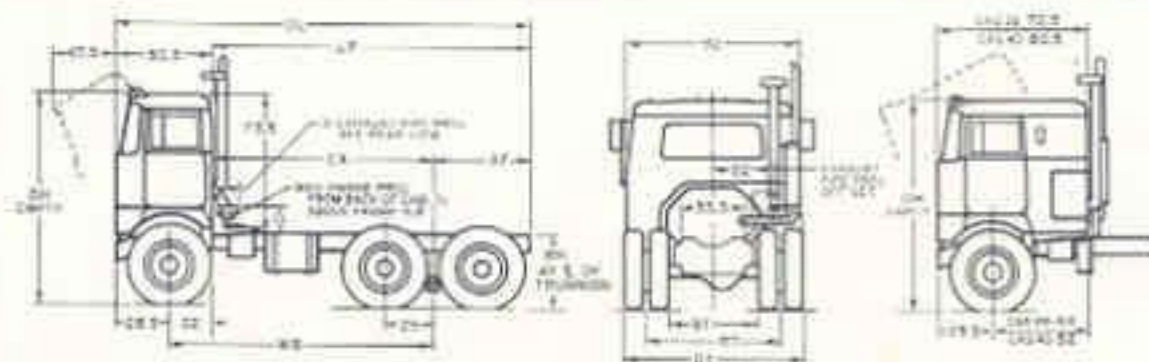
**FUEL TANKS: (gallons)**

Aluminum, Round	51, right side
The following are in pairs of standard	
Aluminum, Round	70, one each side

**CHASSIS EQUIPMENT**

- |   |   |   |                                       |
|---|---|---|---------------------------------------|
| Air starting  | Driver's seat — Bostrom, Viking                   | Hydraulic jack 8- or 12-ton   | Sun visor, right side                 |
| Automatic drain valve                               | Tirey, American Metal, Union-Acton; General, F107 | Power steering  | Tachograph (RPM and/or MPH)           |
| Rigid steering, 33"                                 | Engine water filter, Perry                        | Pyrameter, exhaust  | Tow shock, bumper w/d. (removable)    |
| Breakaway safety valve                              | Exhaust brake                                     | Rider's seat and arm rest (for CA 38)   | Trailer conn., full trailer (no base) |
| Cab air conditioning, roof mounted                  | Front wheel brake limiting valve                  | Sleeper bunk safety strap   | Tare signals, rear (look)             |
| Cab heater, 28,000 lbs. (std. cab)                  | Hand control valve                                | Spring loaded parking brake, incl. warning light in cab (with or w/o std. driveshaft brake) | Wig-Wag low air pressure indicator    |
| Cab heaters, two 39,000 (total) lbs. (sleeper cabs) | Hopper seat (for CA 38)                           | Stop for left side, round fuel tank (for access to rear of cab)                             | Window (over) in sleeper cabs         |
| Chrome plated grill                                 | Hot, air, twin or single                          | Stop and full light, wire   | Windshield wipers                     |
|   | Motor, electric, dual tone                        |   |                                       |
|   | Multimeter  |   |                                       |

Specifications subject to change without notice. Illustrations are not necessarily a representation of standard specifications.



F-685: (A) 15" (B) 7.1" (C) 8.5"

WB	Standard Cab CA 38		Sleeper Cab CAS 39		Sleeper Cab CAS 40		AF	CG	Turning Circle Dia. (Outer edge of tire)	
	LP	CA	LP	CA	LP	CA			Right	Left
144	170	122	148	100	140	92	48	220.5	37 ft.	37 ft.
165	191	142	169	123	161	113	48	241.5	65 ft.	65 ft.
186	270	164	248	142	240	134	116	220.5	71 ft.	71 ft.
244	342	222	320	200	312	192	120	390.5	88 ft.	88 ft.

TIRE SIZE	Oil Approx.	8in				GT
		Empty		Loaded		
		SWDL 56	SWDL 72 SWD 73	SWDL 56	SWDL 72 SWD 73	
10.00-20	112.1	40.2	40.8	37.9	38.1	93.3
10.00-22	113.1	41.5	41.8	38.5	38.3	93.3
11.00-20	112.7	41.1	41.2	38.3	38.5	96

Chassis dimensions are in inches and are for standard chassis unless otherwise denoted.

Frame heights are subject to variations: 1" empty, 1/2" loaded.





FL 1

# Mack Western

## FL700L FS700L Series

WEIGHT SAVING DESIGN • BOLTED CONSTRUCTION • 30° TILT-CAB • FULL RANGE PERFORMANCE • UNLIMITED COMPONENT CHOICE • BEST DIMENSIONS

### STANDARD EQUIPMENT • 4-Wheel Diesel COE Tractor

(Based on Model 770)

<b>WHEELBASE</b>	132" (LP 120", CA 88")
<b>ENGINE (MACK DESIG)</b>	ENDL 673C, Thermodyne
Type	Turbocharged, 5 cyl.
Bore and stroke	2 1/4" x 4"
Piston displacement, cu. in.	673
Brake horsepower at 2100 rpm	250
Max. torque at 3500 rpm	700 lb.-ft.
* Air cleaner	Oil bath type
Radiator frontal area	1000 sq. in.
Fuel pump (APF)	Multiple and
Water filter	Replaceable element type
* Dry type Fan furnished with certain power train combinations.	
<b>FUEL TANK</b>	60 gal., left side, aluminum, v.c.
<b>ELECTRICAL SYSTEM: Alternator</b>	12 Volt, 85 Amp.
Starting system	12 volt (High output)
Batteries	(4) 6 Volt
Plates per cell: 25; Amp. hr. 46, 20 hr. rate	305
<b>NOTE:</b> Mack V 8 engines—only—are supplied with 12 volt, 85 ampere alternator.	
<b>CLUTCH (DANA)</b>	CL 49
Type	Top-plate, dry, 24" O.D.
Area of engagement, sq. in.	473
<b>TRANSMISSION (FULLER)</b>	RT100
Type	Ten-speed, direct
<b>DRIVESHAFT</b>	
Make and size	Spiers; 1270 Series
<b>FRONT AXLE (Mack, 10,500 lb. rating)</b>	FAW 535 C
<b>REAR AXLE (Rockwell-Standard)</b>	RL70
Carrier	Aluminum Housing
Ratios	3.70, 4.11, 4.44, 4.62, 4.87, 5.78
<b>SPRINGS:</b>	
Site	Front: 55" x 24" Rear: 53 1/2" x 2"
Leaves, no. & thickness	5 @ 55 12 @ 55 2 @ 49

<b>BRAKES</b>	Full air w/isolated reservoir
Front (Cam type)	10 1/2" x 6" (250 sq. in.)
Rear (Wedge type)	15" x 7" (440 sq. in.)
Parking	MGM Spring type
* Air Compressor	Tu-Flo 500 (12 cu. ft.)
Air reservoir capacity	2500 cu. in. (approx.)
Limiting valve	Front brake
* Cummins Compaq (112 cu. ft.) std. with Cummins.	

<b>WHEELS &amp; TIRES:</b>	
Wheels	W. handle Steel disc, Aluminum hubs
Tires	10.00-20 (12P), 7.5 Rims

<b>STEERING GEAR: Model</b>	Commer 77
Steering wheel diameter, inch	21"-20.5"

<b>FRAME:</b>			
Size	Material	Section Modulus	RBM in. Lb. Per Cal.
105" x 24" x 1 1/4"	Heat Treated Alloy Steel (FS)	11.05	1,375,000
105" x 24" x 3/4"	Heat Treated Alloy Steel (FS)	17.49	1,925,000
105" x 24" x 1 1/4" + 1/2" Web	Aluminum (FL)	22.00	1,335,000
<b>NOTE:</b> Standard crossmembers are steel, optional aluminum available.			

<b>CAB (MACK)</b>	CAL 47 (Custom Cab Interior)*
Type (S.O.S.® 88C)	50" Tall Cab-over-Engine
* Incl. helper's seat, genuine Naugahyde seat covers, padded engine tunnel, and off-white steering wheel.	

<b>*STANDARD CHASSIS</b>	1/2" Steel Frame Rails	10,150
<b>WEIGHT:</b>	1/2" Steel Frame Rails	10,130
(Estimated Total Lb.)	3/4" Aluminum Frame Rails	10,000
* Deduct 30 lbs. for wedge type front brakes.		

### STANDARD ALUMINUM COMPONENTS

- Flangeless cast transmissions
- Battery boxes and covers
- Cab doors and roof
- Cab grill
- Cab mirrors, headlamp covers & housings
- Engine flywheel housing
- Engine front transfer & rear supports (castings)
- Engine timing gear cover
- Exhaust mounting brackets
- Front side rails (FS)
- Front bumper
- Front cab supports (castings)
- Front crossmember (castings)
- Front spring front & rear brackets (castings)
- Fuel tank
- Radiator assembly
- Radiator inverters
- Rear seat carrier housing
- Rear seat supports
- Rear spring front & rear brackets
- Steering gear housing
- Wheel hubs

### CHASSIS EQUIPMENT

- Air horn, single Grover
- \* Air intake, snorkel type
- Ash tray
- Automatic Back-up Light Switch
- Automatic radiator shutters, modulated
- Automatic reset circuit breakers
- Bumper, flush type
- Cab Heater, 38,000 BTU
- Cab insulation
- Cab roof vent
- Cigar lighter
- Coat hanger, dome light
- Door locks
- Driver's seat-back, Bestrim Viking, and matching rider's seat

- Flexible air, oil and fuel lines
- Grab handles
- Gauges: (Dash Mounted)
  - Air Pressure
  - Fuel, Oil Pressure
  - Water Temperature
- Headlights
- Horn, electric, single tone
- I.C.C. & Marker lights
- Low air pressure indicator, buzzer
- Oil seals, front & rear axles
- Rear view mirrors, two
  - West Coast (bright finish)
- RCCC Instrumentation
- Seat Belts

- Speedometer
- Stop and tail lights, 7 wire circuit
- Sun visor, both sides
- Tachometer, single hand
- Toggle switches
- Tow eyes, front
- Turn signals, front and rear (with 4-way flasher)
- Vent window
- Vertical exhaust
- Voltmeter
- Wheel wrench and handle
- Windshield glass, Solex, tinted
- Windshield washers, electric
- Windshield wipers, dual, etc. dual motor

\*CASE 48 only

Mack Western

MACK TRUCKS, INC.

One of the Signal Companies

**AUTOLIT**



Automobile - Truck - Motorcycle 1900 to Present  
ORIGINAL Sales Brochures, Manuals, Books, Posters,  
Catalogs, and MUCH More. World's largest selection!

## OPTIONAL EQUIPMENT • FL700L & FS700L Series

ENGINE	CHASSIS MODEL	BORE & STROKE	No. of CYL.	Disp. CU. IN.	BHP @ RPM	MAX. TORQUE @ RPM
ENDT 855	FL or FS 795L	5 1/4" x 5"	V-8	866	322 @ 2400	1100 @ 1350
ENDDT 865	FL or FS 795L	5 1/4" x 5"	V-8	866	275 @ 2400	964 @ 1800
ENDT 675	FL or FS 785L	4 3/8" x 6"	5	672	**	906 @ 1200
ENDT 868	FL or FS 797L	5 1/4" x 5"	V-8	866	375 @ 2200	1040 @ 1600
NHC 250L	FL or FS 737L	5 1/2" x 6"	6	655	250 @ 2100	685 @ 1500
SUPER 250	FL or FS 733L	5 1/2" x 6 1/4"	6	927	250 @ 2100	710 @ 1500
SUPER 250/270	FL or FS 733L	5 1/2" x 6 1/2"	6	927	270 @ 2100	730 @ 1500
NTC 290L	FL or FS 747L	5 1/2" x 6"	6	835	290 @ 2100	825 @ 1500
NTC 335L	FL or FS 763L	5 3/8" x 6"	6	855	335 @ 2100	930 @ 1500
NTC 350L	FL or FS 767L	5 3/8" x 6"	6	855	350 @ 2100	1005 @ 1500
NTA 370L	FL or FS 785L	5 3/8" x 6"	6	855	370 @ 2100	1015 @ 1500
6-71N	FL or FS 781L	6 1/4" x 5"	6	425	238 @ 2100	635 @ 1800
8V-71N	FL or FS 773L	4 1/2" x 5"	V-8	508	318 @ 2100	864 @ 1400
8V-71N	FL or FS 773L	4 1/2" x 5"	V-8	568	290 @ 2100	825 @ 1200
8V-71NE	FL or FS 773L	4 1/2" x 5"	V-8	568	260 @ 1950	760 @ 1200
8V-71T	FL or FS 769L	4 1/2" x 5"	V-8	568	308 @ 2100	885 @ 1400
8V-71T	FL or FS 769L	4 1/2" x 5"	V-8	568	335 @ 2100	920 @ 1400
8V-71T	FL or FS 769L	4 1/2" x 5"	V-8	568	350 @ 2100	965 @ 1600
12V-71NE	FL or FS 771L	4 3/8" x 5"	V-12	852	390 @ 1950	1140 @ 1200
12V-71N	FL or FS 771L	4 3/8" x 5"	V-12	852	404 @ 2100	1140 @ 1200
12V-71N	FL or FS 771L	4 3/8" x 5"	V-12	852	438 @ 2100	1154 @ 1200
12V-71N	FL or FS 771L	4 3/8" x 5"	V-12	852	475 @ 2100	1220 @ 1400
1674	FL or FS 753L	4 1/2" x 6"	6	638	270 @ 2200	740 @ 1300
1693T	FL or FS 755L	5 1/4" x 6 5/8"	6	893	325 @ 2100	1000 @ 1490
1693TA	FL or FS 755L	5 1/4" x 6 5/8"	6	893	345 @ 2000	1140 @ 1175
V903L	FL or FS 761L	5 1/2" x 4 3/4"	V-8	803	***	***
VT903L	FL or FS 759L	5 1/2" x 4 3/4"	V-8	903	320 @ 2600	775 @ 1800

\*\*206 @ 1200, 217 @ 1700, 235 @ 2100

\*\*\*280 @ 2600, 645 @ 1800, 300 @ 2600, 693 @ 1800, 320 @ 2600, 738 @ 1800

**WHEELBASE** 110", 122", 128", 134", 140",  
146", 152", 158", 164", 170", 176"

(See chassis diagram for platform etc.)

### CLUTCH:

CL 692 DANA: 14" two plate, Organic, 423 sq. in.  
CL 79 DANA: 15 1/2" two plate, Ceramic, 118 sq. in.  
CL 75 DANA: 14" two plate, Ceramic, 144 sq. in.  
CL 79L DANA: 15 1/2" two plate, Ceramic, 118 sq. in.

### FRONT AXLE:

FAW 535W (MACK) 10,500 lb. rating  
FAW 532C W (MACK) 12,000 lb. rating  
FE 970 (ROCKWELL-STANDARD) 12,000 lb. rating  
FF 921 (ROCKWELL-STANDARD) 12,000 lb. rating  
FH 901 (ROCKWELL-STANDARD) 16,000 lb. rating  
FL 901 (ROCKWELL-STANDARD) 18,000 lb. rating

**POWER STEERING:** Garrison (Hydraulic)

### BRAKES:

FAW 535W 15" x 3 1/2" (220 sq. in.)  
FAW 532C 16 1/2" x 4" (250 sq. in.)  
FAW 532W 15" x 3 1/2" (220 sq. in.)  
FE 970 15" x 3 1/2" (220 sq. in.)  
FF 921 15" x 3 1/2" (220 sq. in.)  
FH 901 15" x 4" (252 sq. in.)  
FL 901 15" x 4" (252 sq. in.)

### SPRINGS:

(Front) 5,000 lb. in place of standard 4,000 lbs.  
(Front) 3,700 lb. in place of standard 4,000 lbs.

### TRANSMISSIONS:

#### MACK:

TRL 1075 (ENDT 675 Only) 5 spd., direct  
FRL 1078 (ENDT 865 Only) 5 spd., direct  
TRDL 107 10 spd., direct  
TRTXL 107 12 spd., direct, low range  
TRXL 107 5 spd., direct, low range  
TRXL 1071 5 spd., direct, in-to range  
TRQL 7220 18 spd., overgear

#### FULLER:

RTO 910 10 spd., overgear  
RTO, RTO 9513 13 spd., overgear  
RT, RTO 915 15 spd., direct & overgear  
RT, RTO 12510 10 spd., direct & overgear  
RT, RTO 12513 13 spd., direct & overgear

#### SPICER:

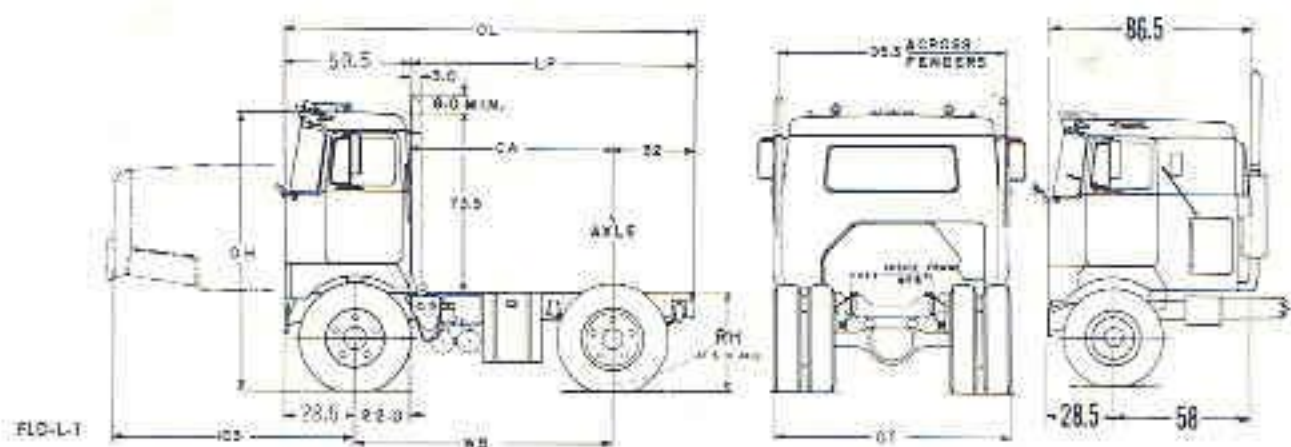
1211-3A 11 spd., overgear  
1262A 6 spd., direct  
8515-3A (Steel case) 16 spd., overgear  
8515-5A (Aluminum case) 16 spd., overgear  
8542A 4 spd., direct  
8746A 4 spd., direct  
8552A 5 spd., direct  
8716-3A or 3B (Steel case) 16 spd., overgear  
8716-5A or 5B (Aluminum case) 16 spd., overgear

# AUTOLIT



Automobile - Truck - Motorcycle 1900 to Present  
ORIGINAL Sales Brochures, Manuals, Books, Posters,  
Catalogs, and MUCH More. World's largest selection!





Specifications subject to change without notice. Illustrations are not necessarily a representation of standard specifications.

FL 700L  
or  
FS 700L  
CHASSIS DIMENSIONS

WB	50" BBC		85" BBC		OL	TURNING CIRCLE DIA. (Outer Edge of Tire) ESTIMATED	
	LP	CA	LP	CA		RIGHT	LEFT
110"	120"	88"			170.5"	43'	46'
116"	126"	94"			176.5"	45'	48'
122"	132"	100"	96"	64"	182.5"	47'	50'
128"	138"	106"	102"	70"	188.5"	49'	52'
134"	144"	112"	108"	76"	194.5"	50'	54'
140"	150"	118"	114"	82"	200.5"	52'	56'
146"	156"	124"	120"	88"	206.5"	54'	58'
152"	162"	130"	126"	94"	212.5"	56'	60'
158"	168"	136"	132"	100"	218.5"	57'	61'
164"	174"	142"	138"	106"	224.5"	59'	63'
170"	180"	148"	144"	112"	230.5"	61'	65'
176"	186"	154"	150"	118"	236.5"	62'	67'

TIRE SIZE	OH APPROX.		RH		OT	
	EMPTY	LOADED	EMPTY	LOADED	RAD 5281	R 170
10.00-20	113.8	111.3	42.60	38.45	95.3	95.0
10.00-22	114.8	112.3	43.60	39.45	95.3	96.0
11.00-20	114.5	112.0	43.40	39.15	96.0	—
11.00-22	115.5	112.7	44.25	39.85	96.0	—

**MACK WESTERN  
HAYWARD, CAL.**

"THE TRUCK CAPITAL OF THE WEST"



**MACK TRUCKS, INC.  
ALLENTOWN, PA.**

"THE TRUCK CAPITAL OF THE WORLD"





Sleeper Cab, CA5 4E shown (optional)

# MODEL F-700T SERIES

## STANDARD EQUIPMENT — Coe 4-Wheel Tractor

(Based on Model F-70TT)

WHEELBASE ..... 128" (LP 139", CA 106")

ENGINE: (MACK Diesel) ..... **END 679E, Thermodyne**  
 Type ..... Naturally aspirated, 6 cyl.  
 Bore and stroke ..... 4 7/8" x 6"  
 Piston displacement, cu. in. .... 672  
 Brake horsepower at 2100 rpm ..... 180  
 \*Max. torque at 1400 rpm ..... 540 lb. ft.  
 Lube oil filter ..... Full-flow, twin spin-on disposable type  
 Air cleaner (dry type) ..... (Donaldson) EPA 15  
 Radiator, frontal area ..... 1,000 sq. in.  
 Fuel pump ..... Multiple unit  
 Water filter ..... Spin-on disposable element type  
 Thermostat (set to open) ..... 155\*

\*Based on performance at sea level & 80°F dry air intake temperature.

FUEL TANK ..... 51 gal., left hand, steel, round

ELECTRICAL SYSTEM: Alternator ..... 12 Volt, 85 Amp. (L/N)  
 Starting system ..... 12 Volt  
 Batteries ..... 4 (6) Volt  
 Plates per cell 23; Amp. hr. @ 20 hr. rate ..... 165

CLUTCH ..... **CL 601** or **CL 771**  
 Make ..... Spicer Lipé  
 Size ..... 14", 2-plate 14", 2-plate  
 Lining ..... Organic Organic  
 Area of engagement ..... 424 sq. in. 423 sq. in.

TRANSMISSION ..... **RT 610**  
 Type ..... Ten speed direct

FRONT AXLE: ..... **FA 535C**  
 Capacity ..... 10,500 lbs.

REAR AXLE: ..... **\*RAS 512C**  
 Capacity ..... 23,000 lbs.  
 Carrier ..... CRS 84  
 Ratios ..... 4.25, 4.63, 5.14, 5.57, 6.17, 6.83, 7.14

\*Max. GCW 45,000 lbs.

SPRINGS: ..... Front: ..... Rear  
 (FA 535C-W) (RAS 512C-W)  
 Ground load rating ..... 10,500 lbs. 23,000 lbs.  
 Size ..... 55" x 3 1/2" 53 3/4" x 3"  
 Leaves no. & thickness ..... 3 tapered 9 @ .558"  
 Pack thickness @ axle spring pad ..... 2.432"

BRAKES ..... (TU-FLO 501 compressor) AIR  
 Front (cam type) ..... 16 1/2" x 4" (250 sq. in.)  
 Rear (cam type) ..... 16 1/2" x 7" (440 sq. in.)  
 Auxiliary ..... Spring loaded type

AIR RESERVOIR ..... **ONE**  
 Location ..... Under rear cross member  
 Capacity ..... 2,235 cu. in.

WHEELS AND TIRES: .....  
 Wheels ..... Cast spoke  
 Tires ..... 10.00-20 (12P) 7.5 rims

STEERING GEAR: Model ..... **SG 201**  
 Steering wheel diameter: ratio ..... 21": 32.5:1

FRAME: ..... Material ..... Heat-treated ..... Section ..... RBM in lbs.  
 Size ..... 110,000 PSI Minimum Yield Strength Steel ..... Modulus ..... Per Rail  
 13 3/4" x 3 3/4" x 1 1/2" (Deep Section) ..... 16.55 ..... 1,830,000

CAB (MACK) ..... **CA 47** (No rider seat)  
 Type (50.5" BRC) ..... Cab over engine

STANDARD CHASSIS WEIGHT (EST. LBS.)  
 Front 6,790; Rear 3,663; Total 10,453

### CHASSIS EQUIPMENT

Automatic radiator shutters  
 Automatic reset circuit breakers  
 Back-up light  
 Bumper, flush type  
 Cab roof vent, four way  
 Cab step — L.H. & R.H.  
 Combination heater and def., 42,000 BTU  
 Combination stop, tail & rear turn signals (2)  
 Cummins 12 CFM compressor (Cummins eng. only)

Tu-Flo 500 compressor (Def. diesel & Mack 8 cyl. eng.)  
 Headlights  
 Horn, electric, single tone  
 I.D. & clearance lamps  
 Low air pressure buzzer  
 Rear view mirror, two; West Coast type  
 Seat belts  
 Shock absorbers, front (strut type)  
 Side reflectors  
 Side marker lights & reflectors  
 Sun visor, left side

Turn signals, front & rear (with 4-way flasher)  
 Undercoating  
 Vertical exhaust  
 Voltmeter  
 Warning light for spring loaded aux. brakes  
 Wheel wrench and handle  
 Windshield glass, Solex  
 Windshield washers  
 Windshield wipers, dust, air, two motors  
 Tachometer, single hand  
 Trailer conn., semi-trailer

**MACK TRUCKS, INC.**  
 ONE OF THE SIGNAL COMPANIES [S]

**AUTOLIT**



Automobile - Truck - Motorcycle 1900 to Present  
 ORIGINAL Sales Brochures, Manuals, Books, Posters,  
 Catalogs, and MUCH More. World's largest selection!

### OPTIONAL CHASSIS EQUIPMENT

Air intake system — outside — under cab  
 Air starting  
 Automatic drain valve  
 Break-away safety valve  
 Cab air conditioning  
 Chrome plated grill  
 Chrome plated turn signals (front)  
 Chrome plated W.C. type rear view mirrors  
 Deluxe cab interior (CAL/D47 - CAS/D468)  
 Deluxe interior sleeper/bunk trim  
 Differential, Mack power divider  
 (For dual reduction rear axle)  
 Driver's seat — Bestrom, Viking T-Bar,  
 West Coast or Levelair; American  
 Metal, unison action, Mack suspension

Electric window lift — R.H. side  
 Mack engine brake — (ENDT8 6730 - 675 -  
 676 - 865 - 866)  
 Engine brake (Cummins & Detroit diesel eng.)  
 Engine lube oil filter-by-pass type  
 (WGS-WB2) — Cummins & Detroit diesel  
 only (Required w/NTC335 - 350 - 370)  
 Engine water filter — (Detroit diesel only)  
 Ether applicator  
 Exhaust pyrometer  
 Front wheel brake limiting valve  
 Hand control valve  
 Helper seat  
 Helper springs; rear  
 Horn, air, twin or single

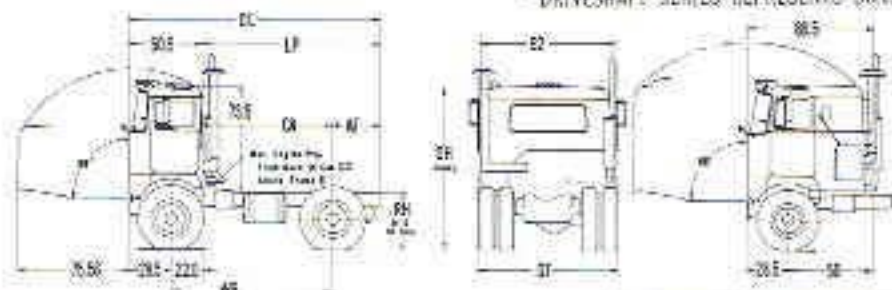
Horn, electric, dual tone  
 Hobometer  
 Hydraulic jack, 8 or 12 ton  
 Mack Bulldog mirrors  
 Rider seat  
 Rider's seat arm rest  
 Step for left side, round fuel tank  
 (For access to rear of cab)  
 Sun visor, right side  
 Tachograph (RPM and/or MPH)  
 Tow shackle, bumper mounted (Removable)  
 Trailer conn., full trailer (No hose)  
 Underframe exhaust (N/A on 8V-71 Series)  
 Wig-wag low air pressure indicator

### F-700T SERIES APPROVED POWER TRAIN COMBINATIONS

ENGINE	CLUTCH	TRANSMISSION	*DRIVE-SHAFT SERIES	REAR AXLE
END 673E	CL 691 CL 771	RT 610	1710	R6S 5120-W RAD 5280-W RAD 5290-W RAD 5330-W R 170
	CL 69 CL 75 CL 77 CL 78	TRD 722	1710	
		TRD 7220	1610	
		TRD 7220 RTD 910 RT 910 RTD 9513 RT-RTD 915	1710 1610 1710 1710 1710	
ENDT 673	CL 69 CL 75 CL 77 CL 78	TRD 722-7220	1710	RAD 5280-W RAD 5290-W RAD 5330-W R 170
		TRD 7220	1810	
		RTD 910	1710	
		RTD 910 RTD 9513 RTD 915	1810 1810 1710 1810	
ENDT 6780 Super 250	CL 69 CL 75 CL 77 CL 78 CL 79	TRD 722-7220	1710	RAD 5280-W RAD 5290-W RAD 5330-W R 170
		TRD 7220	1810	
		RT-RTD 910	1710	
		RTD 9513 RT 915 RTD 915	1810 1810 1710	
NTC 335 BV-71N	CL 69 CL 75 CL 77 CL 78 CL 79	TRD 7220	1810	
		TRD 7220	1850	
		RT-RTD 910	1810	
		RTD 9513 RT 915 RTD 915	1850 1850 1810	

ENGINE	CLUTCH	TRANSMISSION	*DRIVE-SHAFT SERIES	REAR AXLE		
BV-71T	CL 69 CL 75 CL 77 CL 78 CL 79	RT-RTD 12510 RT-RTD 12513 TRD 107	1810 1850 1850	RAD 5280-W RAD 5290-W RAD 5330-W R-170		
	NTC 350 NTA 370	CL 75 CL 78 CL 79	RT-RTD 12510 RT-RTD 12513 TRD 107		1810 1850 1850	
		V-903 VI 903	CL 692 CL 772 CL 791		RT-RTD 910 RT 9513 RT-RTD 915	1710 1810 1810
			ENDT 675 (Maxidyne)		CL 69 CL 75 CL 77 CL 78 CL 79 CL 721	TRL 1076
TRL 1078	1710					
ENDT 676 (Maxidyne)	CL 75 CL 78 CL 79 CL 721	TRL 1076		1810		
		TRL 1078		1810		
ENDT 865 (Maxidyne)	CL 75 CL 78 CL 79 CL 721	TRL 1076	1810			
		TRL 1078	1810			
ENDT 86E	CL 75 CL 78 CL 79	TRD 107	1810 H.O.			

\*DRIVESHAFT SERIES REPRESENTS SIZE, NOT MANUFACTURER.



WB	Standard Cab CA 47		Sleeper Cab CAS 48		AF	OL	Turning Circle Dia. (Outer edge of tire) Etc.	
	LP	CA	LP	CA			Right	Left
110	167	88	101	89	79	217.5	49 ft.	49 ft.
118	167	96	131	80	71	217.5	49 ft.	49 ft.
126	159	108	103	70	33	189.5	49 ft.	49 ft.
135	146	113	110	77	33	195.5	51 ft.	51 ft.
143	154	121	118	85	33	204.5	53 ft.	53 ft.
156	167	134	131	98	33	217.5	57 ft.	57 ft.

Chassis dimensions are in inches and are for standard chassis unless otherwise noted.

TIRE SIZE	OH Approx.	RH		OT
		Empty	loaded	
10.00-20	114.8	41.3	37.5	93.3
10.00-22	115.7	42.3	38.5	95.3
11.00-20	115.3	41.9	38.1	96
11.00-22	116.3	42.8	39.1	96

Frame heights are subject to variations: 1" empty, 1/2" loaded.





Sleeper Cab, CA3 48 shown (optional)

## MODEL F-700ST SERIES

### STANDARD EQUIPMENT — Coe 6-Wheel Tractor

(Based on Model F-711ST)

**WHEELBASE** 144" (LP 171", CA 122")

**ENGINE:** (MACK Diesel) **ENDT 673**  
 Type Turbocharged, 6 cyl.  
 Bore & stroke 4 7/8" x 6"  
 Piston displacement, cu. in. 672  
 \*Brake HP @ 2100 rpm 225  
 \*Max. torque @ 1500 rpm 653 ft. lb.  
 Lube oil filler Full-flow, twin spin-on disposable type  
 Air cleaner (dry type) (Donaldson) EBA 15  
 Radiator, frontal area 1,000 sq. in.  
 Fuel pump Multiple unit  
 Water filter Spin-on disposable element type  
 Thermostat (set to open) 155°

\*Based on performance at sea level & 60°F dry air intake temperature.

**FUEL TANK** 51 gal., left hand, steel, round

**ELECTRICAL SYSTEM:** Alternator 12 Volt, 85 Amp. (1/N)  
 Starting system 12 Volt  
 Batteries 4 (6) Volt  
 Plates per cell: 23; Amp. hr. @ 20 hr. rate 165

**CLUTCH:**  
 Make CL 68 or CL 77  
 Spicer Lip  
 Size 14", 2-plate 14", 2-plate  
 Lining Organic Organic  
 Area of engagement 424 sq. in. 423 sq. in.

**TRANSMISSION:** (MACK) **TRD 722**  
 Type Ten speed, direct, duplex

**FRONT AXLE:** **FA 535C**  
 Capacity 10,500 lbs.

**BOGIE:** **SWS 50C**  
 Capacity 34,000 lbs.  
 Carriers GROPC 92 & CRD 93  
 Ratios 1.87, 4.17, 4.50, 4.76, 5.13, 5.73, 6.34, 7.00, 7.49

**SPRINGS:**  

	Front	Rear
	(FA 535C)	(SWS 50C)
Ground load rating	10,500 lbs.	34,000 lbs.
Size	55" x 3 1/2"	50" x 4"
Leaves no. & thickness	3 tapered	9 @ .625"
Pack thickness @ axle spring pad	2.432"	

**BRAKES:** (TU-FLO 501 Compressor) **AIR**  
 Front (Cam type) 16 1/2" x 4" (250 sq. in.)  
 Rear (Cam type) 16 1/2" x 7" (880 sq. in.)  
 Auxiliary Spring loaded type

**AIR RESERVOIRS** **TWO**  
 Location One each side under frame rail  
 Capacity (Each) 1750 cu. in.

**WHEELS AND TIRES:**  
 Wheels Cast spoke  
 Tires 10.00-20 (12P) 7.5-rims

**STEERING GEAR:** Model **SS 261**  
 Steering wheel diameter, ratio 21", 32.5:1

**FRAME:**  

Material	Section	BBM in lbs.
Heat treated	Modulus	Per Rail
Size 135 1/2" x 3 1/2" x 1/2"	16.65	1,830,000
Minimum Yield (Deep Section) Strength Steel		

**CAB:** (MACK) **CA 47** (No rider's seat)  
 Type (50.5" EBC) Cab over engine

**STANDARD CHASSIS WEIGHT (EST. LBS.):**  
 Front 6,980; Rear 6,918; Total 13,898

### CHASSIS EQUIPMENT

Automatic radiator shutters  
 Automatic reset circuit breakers  
 Back up light  
 Bumper, flush type  
 Cab roof vent, two way  
 Cab step — L. side & R. side  
 Combination stop, tail & rear turn signals (2)  
 Combination heater and def., 42,000 BTU  
 Cummins (2 CFM) compressor (Cummins eng. only)

TU-FLO 500 compressor (Del. diesel & Mack 8 cyl. eng.)  
 Engine Water Conditioner  
 Headlights  
 Horn, electric, single tone  
 I.D. & clearance lamps  
 Low air pressure buzzer  
 Rear view mirror, two, West Coast type  
 Seat belts  
 Shock absorbers, front (strut type)  
 Side reflectors  
 Sun visor, left side  
 Tachometer, single hand

Trailer conn., semi-trailer  
 Turn signals, front & rear (with 4 way flasher)  
 Undercoating  
 Vertical exhaust  
 Voltmeter  
 Warning light for spring loaded aux. brakes  
 Wheel wrench and handle  
 Windshield glass, Solex  
 Windshield washers  
 Windshield wipers, dual; air, two motors

**MACK TRUCKS, INC.**  
 ONE OF THE SIGNAL COMPANIES

**AUTOLIT**



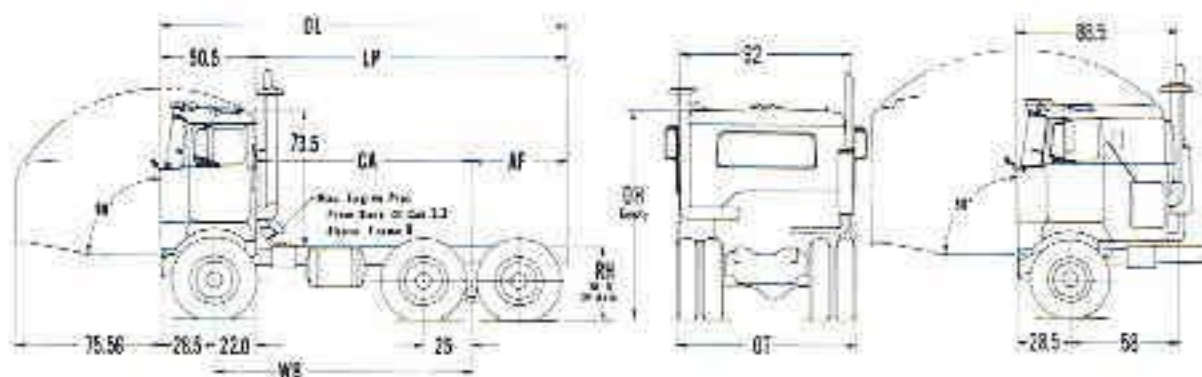
Automobile - Truck - Motorcycle 1900 to Present  
 ORIGINAL Sales Brochures, Manuals, Books, Posters,  
 Catalogs, and MUCH More. World's largest selection!

## F-700ST SERIES APPROVED POWER TRAIN COMBINATIONS

ENGINE	CLUTCH	TRANSMISSION	* DRIVESHAFT SERIES		BOGIE
			MAIN	INTER-AXLE	
ENDT 673	CL 68 CL 75 CL 77 CL 78	TRD 722-7220	1710	1610	
		TRT 722-7220	1710	1610	
		TRD 7220	1810	1710	
		RT 910	1710	1610	
		RTO 910	1610	1610	
		R10 9513	1810	1710	
ENDT 673C Super 250	CL 69 CL 75 CL 77 CL 78 CL 79	TRD 722-7220	1710	1610	
		TRT 722-7220	1710	1610	
		TRD 7220	1810	1710	
		RT - RTO 910	1710	1610	
		RTO 9513	1810	1710	
		RT 915	1810	1710	
NTC 290 NTC 335 RV 71N	CL 69 CL 75 CL 77 CL 78 CL 79	TRD 7220	1810	1710	
		TRT 7220	1710	1610	
		TRD 7220	1850	1810	
		RT - R10 910	1810	1710	
		RTO 9513	1850	1810	
		RT 915	1850	1810	
RV 71T	CL 69 CL 75 CL 77 CL 78 CL 79	RT - RTO 12510	1810	1710	SWS 560W SWS 570W SWA 570W
		RT - RTO 12513	1850	1810	
		TRDL 107	1850	1810	

ENGINE	CLUTCH	TRANSMISSION	* DRIVESHAFT SERIES		BOGIE	
			MAIN	INTER-AXLE		
NTC 350 NTA 370	CL 75 CL 78 CL 79	RT - RTO 12510	1610	1710		
		RT - RTO 12513	1850	1810		
		TRDL 107	1850	1810		
V 503 VT 503	CL 692 CL 772 CL 791	RT - RTO 910	1710	1610		
		RT 9513	1810	1710		
		RT - RTO 915	1810	1710		
ENDT 675 (Maxidyne)	CL 69 CL 75 CL 77 CL 78 CL 79 CL 721	TRL 1076	1710	1610		
						TRL 1078
						TRL 1076
						TRL 1078
						CL 721
ENDT 676 (Maxidyne)	CL 75 CL 78 CL 79 CL 721	TRL 1076	1810	1710		
						TRL 1078
						CL 721
ENDT 865 (Maxidyne)	CL 75 CL 78 CL 79 CL 721	TRL 1076	1810	1710		
						TRL 1078
						CL 721
ENDT 866	CL 75 CL 78 CL 79	TRDL 107	1810	1710		

\*DRIVESHAFT SERIES REPRESENTS SIZE, NOT MANUFACTURER.



WB	Standard Cab		Sleeper Cab		AF	OL	Turning Circle Dia. (Outer edge of tire) Exp.	
	CA 47		CA9 48				Right	Left
	LP	CA	LP	CA				
138	165	116	129	80	49	214.5	50.5 ft.	50.5 ft.
144	171	122	135	86	49	220.5	57 ft.	57 ft.
150	177	128	141	92	49	225.5	61 ft.	61 ft.
165	192	143	156	107	49	241.5	65 ft.	65 ft.
186	221	164	235	128	107	320.5	71 ft.	71 ft.
244	343	222	307	185	121	372.5	98 ft.	98 ft.

Chassis dimensions are in inches and are for standard chassis unless otherwise denoted.

TIRE SIZE	OH Approx.	RH		OT
		Empty	Loaded	
10.00-20	114.3	42.0	39.4	95.3
10.00-22	115.7	43.0	40.4	95.3
11.00-20	115.3	42.6	39.8	96

Frame heights are subject to variations: 1" empty, 1/2" loaded.





FL45-1

# Mack Western

## FL700LS FS700LS Series

WEIGHT SAVING DESIGN • BOLTED CONSTRUCTION • 90° TILT-CAB • FULL RANGE PERFORMANCE • UNLIMITED COMPONENT CHOICE • BEST DIMENSIONS

### STANDARD EQUIPMENT \* 6-Wheel Diesel COE Tractor

(Based on Model 711L1)

<b>WHEELBASE</b> .....	180" O.P. 188" CA 118"
<b>ENGINE:</b> (Mack Diesel).....	ENOLT 673C, Thermodyne
Type.....	Turbocharged, 5 cyl.
Bore and stroke.....	4 1/4" x 6"
Piston displacement, cu. in.....	672
Max. torque at 1300 rpm.....	150
Max. torque at 1500 rpm.....	701 lb.-ft.
Lube oil filter (12 qts.).....	WGB-WB-5
*Air cleaner.....	Oil bath type
Radiator, frontal area.....	3000 sq. in.
Fuel pump (A/F).....	Multiple unit
Water Filter.....	Replaceable element type
*Dry type Fan furnished with certain power train combinations.	
<b>FUEL TANK</b> .....	80 gal., left side, aluminum, rd.
<b>ELECTRICAL SYSTEM:</b> Alternator.....	12 Volt, 75 Amp.
Starting system.....	12 Volt (High output)
Batteries.....	(6) 6 Volt
Plates per cell 22; Amp. hr. @ 20 hr. rate.....	100
NOTE: Mack V-8 engines only are supplied with 12 volt, 52 ampere alternator.	
<b>CLUTCH:</b> (SANKS).....	CL 89
Type.....	Two plate, dry, 11" O.D.
Area of engagement, sq. in.....	432
<b>TRANSMISSION:</b> (FULLER).....	WTO 814
Type.....	Ten speed, overdrive
<b>DRIVESHAFT:</b>	
Make and size.....	S Spicer; 1700 Series
Inter-Axle.....	S Spicer; 1600 Series
<b>FRONT AXLE:</b> (Mack, 10,500 lb. rating).....	*FA 535N
*Hi Brakes — Customer responsibility.	
<b>BODIE:</b> Model.....	SL80 (RSA 34) Suspension)
Carrier.....	Aluminum
Ratios.....	4.11, 4.44, 4.62, 4.87, 5.28
<b>SPRINGS:</b>	
Size.....	15" x 3 1/2" RSA 140
Leaves, no. & thickness.....	17 @ .301 Rubber Block

<b>BRAKES</b> .....	Wedge type w/isolated reservoir
Front.....	No brakes
Rear.....	11" x 7" (800 sq. in.)
Parking.....	WDM Spring type
*Air Compressor.....	Tu. Flo 500 (17 cu. ft.)
Air reservoir capacity.....	2000 cu. in. (approx.)
Landing valve.....	Front brake
*Customs Compact (17 cu. ft.) alt. with Cummins.	

<b>WHEELS &amp; TIRES:</b>	
Wheels.....	H I Service Steel 5-1/2, Aluminum hubs
Tires.....	10.00-20 (12P), 7.5 Rims

<b>STEERING GEAR:</b> Model.....	Cummins 71
Steering wheel diameter; ratio.....	21" - 32.5:1

<b>FRAME:</b>			
	Section 8000 In. Lbs.		
Size	Material	Modulus	Per Rail
104" x 3 1/2" x 1/2"	Hot Treated	12.05	1,325,500
	Alloy Steel (F2)		
104" x 3 1/2" x 1/2"	Hot Treated	17.49	1,821,900
	Alloy Steel (F5)		
104" x 3 1/2" x 9/16"	Aluminum (FL)	22.00	1,320,000
x 1/2" Web			
104" x 3 1/2" x 1/2"	Aluminum (FL)	32.45	1,950,000
x 1/2" Web			

NOTE: Standard crossmembers are steel, optional aluminum available.

<b>CAB:</b> (Mack).....	CAL 47 (Custom Cab Interior)*
Type (50" EDC).....	90° Tilt Cab-over-Engine
*Incl. helper's seat, Neoprene seat covers, padded engine tunnel and off-white steering wheel.	

<b>STANDARD CHASSIS</b> .....	1/2" Steel Frame Rails.....	11,350
<b>WEIGHT:</b> .....	1/2" Steel Frame Rails.....	12,220
(Estimated total lbs.).....	1/2" Aluminum Frame Rails.....	11,790
	1/2" Aluminum Frame Rails.....	11,350

### STANDARD ALUMINUM COMPONENTS

- Aluminum seat transmission
- Battery lower rail cover
- Cab door and roof
- Cab grill
- Cab styling (radiators, mirrors & trimmings)
- Engine (w/steel housing)
- Engine steel (overhead & side supports, covers)
- Engine timing gear cover
- Exhaust mounting brackets
- Frame air rails (FL)
- Front bumper
- Front seat supports (optional)
- Front suspension (optional)
- Front spring front & rear brackets (optional)
- Fuel tank
- Hydraulic gear, steering, seat lift
- Radiator shrouds
- Radiator fan shroud
- Radiator shutters
- Rear lock center housing
- Rear seat supports
- Rear spring front & rear brackets
- Steering gear housing
- Wheel hubs

### CHASSIS EQUIPMENT

Air horn, single driver  
Air intake, snorkel type  
Ash tray  
Automatic back-up light switch  
Automatic radiator shutters, modulated  
Automatic reset circuit breakers  
Bumper, flush type  
Cab heater, 28,000 BTU  
Cab insulation  
Cab roof vent  
Cigar lighter  
Coat hanger, dome light  
Door locks  
Driver's seat-Mack, Bestrom Viking, and matching rider's seat.

Flexible air, oil and fuel lines  
Grab handles  
Gauges, (Dash Mounted)  
Air Pressure  
Fuel, Oil Pressure  
Water Temperature  
Headlights  
Heat, electric, single zone  
I.C. & Marker lights  
Low air pressure indicator, buzzer  
Oil seals, front & rear axle  
Rear view mirrors, two  
Wet Coat (polished alum.)  
ROCC instrumentation  
Seat belts

Speedometer  
Stop and tail lights, dual  
Sun visor, both sides  
Tachometer, single hand  
Toggle switches  
Tow eyes, front  
Turn signals, front & rear (with 4-way flasher)  
Veil windows  
Vertical exhaust  
Voltmeter  
Wheel wrench and handle  
Windshield glass, Solar, tinted  
Windshield washers, electric  
Windshield wipers, dual, air, dual motor

Mack Western

MACK TRUCKS, INC.

**AUTOLIT**



Automobile - Truck - Motorcycle 1900 to Present  
ORIGINAL Sales Brochures, Manuals, Books, Posters,  
Catalogs, and MUCH More. World's largest selection!

OPTIONAL EQUIPMENT • FL700LS & FS700LS Series

ENGINE	CHASSIS MODEL	BORE & STROKE	No. of CYL.	Disp. CU. IN.	BHP @ RPM	MAX. TORQUE @ RPM
ENDT 865	FL or FS 780LS	5 1/4" x 5"	V-8	888	372 @ 2400	1100 @ 1200
ENDOT 865	FL or FS 790LS	5 1/4" x 5"	V-8	888	275 @ 2400	984 @ 1400
ENDT 875	FL or FS 788LS	5 1/8" x 5"	6	672	**	908 @ 1200
NH 280L	FL or FS 781LS	5 1/4" x 5"	6	675	228 @ 2300	615 @ 1600
NHC 280L	FL or FS 781LS	5 1/4" x 5"	6	675	325 @ 1900	670 @ 1400
NHC 290L	FL or FS 782LS	5 1/8" x 5"	6	675	250 @ 2300	630 @ 1600
NH27L	FL or FS 783LS	5 1/2" x 5 1/4"	6	817	350 @ 2100	720 @ 1500
NYC 270E	FL or FS 767LS	5 1/8" x 5"	6	675	270 @ 1900	638 @ 1400
NYC 290L	FL or FS 767LS	5 1/8" x 5"	6	675	290 @ 2100	625 @ 1500
NYC 330L	FL or FS 768LS	5 1/8" x 5"	6	675	315 @ 2100	630 @ 1600
NYC 360L	FL or FS 767LS	5 1/8" x 5"	6	675	360 @ 2100	675 @ 1600
NTA 300L	FL or FS 760LS	5 1/2" x 5"	6	693	270 @ 2000	1015 @ 1500
6-TIN	FL or FS 781LS	5 1/4" x 5"	6	675	238 @ 2300	620 @ 1600
8V-71N	FL or FS 770LS	4 1/8" x 5"	V-8	568	310 @ 2100	664 @ 1400
8V-71N	FL or FS 770LS	4 1/8" x 5"	V-8	568	290 @ 2100	605 @ 1200
8V-71NE	FL or FS 770LS	4 1/8" x 5"	V-8	568	350 @ 1900	760 @ 1200
12V-71NE	FL or FS 771LS	4 1/8" x 5"	V-12	852	300 @ 1800	1140 @ 1200
12V-71N	FL or FS 771LS	4 1/8" x 5"	V-12	852	404 @ 2100	1190 @ 1200
12V-71N	FL or FS 771LS	4 1/8" x 5"	V-12	852	434 @ 2100	1154 @ 1200
12V-71N	FL or FS 771LS	4 1/8" x 5"	V-12	852	475 @ 2100	1220 @ 1400
1673C	FL or FS 748LS	4 1/8" x 5"	6	638	290 @ 2000	690 @ 1600
1674	FL or FS 758LS	4 1/8" x 5"	6	638	270 @ 2000	740 @ 1200
1680T	FL or FS 750LS	5 1/4" x 5 1/2"	6	893	325 @ 2100	1000 @ 1400
16HTA	FL or FS 750LS	5 1/4" x 5 1/2"	6	893	375 @ 2000	1140 @ 1675
V800L	FL or FS 761LS	5 1/8" x 5 1/4"	V-8	868	***	***

\*\*200 @ 1200, 237 @ 1400, 225 @ 2100

\*\*\*285 @ 2500, 300 @ 2800, 320 @ 2600, 645 @ 1800, 690 @ 1800, 728 @ 1800

**WHEELBASE** 148", 152", 158", 166", 170",  
(See chassis diagram for 176", 182", 188", 194", 200", 206", 212",  
platform etc.) 218", 224", 230", 236", 242", 248", 254"

**CLUTCH:**

MACK: CL 305, 14", two plate, 425 sq. in.  
CL 66 DANA: 15 1/2", two plate, 404 sq. in.  
CL 692 DANA: 14" two plate, Organic 423 sq. in.  
CL 721 DANA: 14" two plate, Ceramic, 423 sq. in.

**FRONT AXLE:**

FA 535C-W (MACK) 10,500 lb. rating  
FA 535N, FA 535C-W (MACK) 22,000 lb. rating  
FF 305N, FF 301 (ROCKWELL-STANDARD) 12,000 lb. rating  
NOTE: FA 535N, FF 305N no brakes.

**POWER STEERING**

Garrison (Hydraulic)

**BRAKES:**

FA 535C 18 1/4" x 4" (250 sq. in.)  
FA 535W 15" x 4" (250 sq. in.)  
FA 535C 16 1/2" x 4" (250 sq. in.)  
FA 535W 15" x 4" (250 sq. in.)  
FF 301 15" x 7 1/2" (320 sq. in.)  
FA 535N, FF 301N No brakes—customer responsibility

**SPRINGS:**

(Front) 3,000 lb. in place of standard 4,000 lbs.  
(Front) 3,700 lb. in place of standard 4,000 lbs.

**TRANSMISSIONS**

TMTL 722 15 spd., direct triple  
TMTL 723 13 spd., surgear triple  
TRML 722 18 spd., overgear, quadruple  
TRL 1075 or TRL 1075 (Max torque) 5 spd.  
TRXL 107 or TRXL 1071 Lo-hole, 5 spd.  
T-305A 5 spd.  
RT-910 10 spd., roadranger  
RT-915 15 spd., roadranger  
RTD-9513 (Fuller) 13 spd., overdrive, roadranger  
RTD-9513 (Fuller) 13 spd., overdrive, roadranger  
RTD-12513 (Fuller) 13 spd., overdrive, roadranger  
8516-3A 15 spd.  
8516-5A 15 spd.  
1271-3A (Spicer) overdrive, 13 spd.  
1272A (Spicer) 8 spd.  
8-L 800SP 3 spd., auxiliary  
8-L 834SC 4 spd., auxiliary

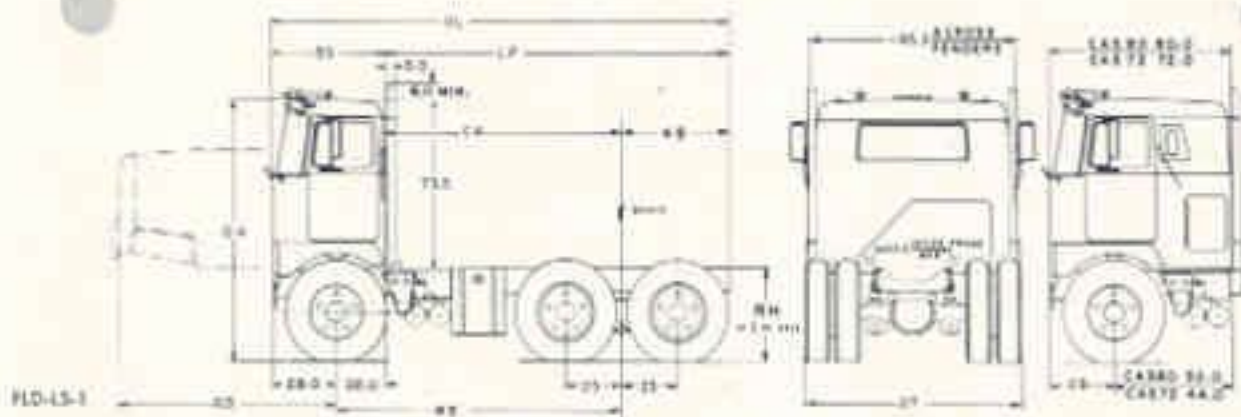
**BOGIE:**

SWS 573W — Double reduction - Max. capacity 44,000 lbs.  
Ratios 4.17, 4.50, 4.76, 5.11, 5.71, 6.34  
SWS 50W — Double reduction - Max. capacity 34,000 lbs.  
Ratios 4.17, 4.50, 4.76, 5.11, 5.71, 6.34  
SQHD — Single reduction capacity 38,000 lbs.  
Ratios 4.11, 4.44, 4.67, 4.87, 5.28, 6.35  
CARRIER HOUSINGS—DLHD & SQHD Aluminum  
SWS 573W Malleable  
SWS 50W Aluminum

**AUTOLIT**



Automobile - Truck - Motorcycle 1900 to Present  
ORIGINAL Sales Brochures, Manuals, Books, Posters,  
Catalogs, and MUCH More. World's largest selection!



Specifications subject to change without notice. Illustrations are not necessarily a representation of standard specifications.

**FL 700LS  
or  
FS 700LS  
CHASSIS DIMENSIONS**

WB	50" BBC		86" BBC		OL	TURNING CIRCLE DIA. (Outer Edge of Tire) ESTIMATED	
	LP	CA	LP	CA		RIGHT	LEFT
140"	168"	118"	138"	82"	218"	52"	55"
146"	174"	124"	144"	88"	224"	54"	58"
152"	180"	130"	150"	94"	230"	56"	60"
158"	186"	136"	156"	100"	236"	58"	62"
164"	192"	142"	162"	106"	242"	60"	63"
170"	198"	148"	168"	112"	248"	61"	65"
176"	204"	154"	174"	118"	254"	62"	67"
182"	210"	160"	180"	124"	260"	64"	68"
188"	216"	166"	186"	130"	266"	66"	71"
194"	222"	172"	192"	136"	272"	68"	73"
200"	228"	178"	198"	142"	278"	69"	74"
206"	234"	184"	204"	148"	284"	71"	76"
212"	240"	190"	210"	154"	290"	73"	78"
218"	246"	196"	216"	160"	296"	74"	80"
224"	252"	202"	222"	166"	302"	76"	82"
230"	258"	208"	228"	172"	308"	78"	84"
236"	264"	214"	234"	178"	314"	80"	86"
242"	270"	220"	240"	184"	320"	81"	87"
248"	276"	226"	246"	190"	326"	83"	87"
254"	282"	232"	252"	196"	332"	85"	91"

TIRE SIZE	OH APPROX.		RH				OT	
	EMPTY	LOADED	EMPTY		LOADED		SWS SW	SQHD SLHD
			SWS SW	SQHD SLHD	SWS SW	SQHD SLHD		
10.00-20	111.8	111.1	41.8	40.8	38.7	38.3	91.3	91.5
10.00-22	114.8	112.3	42.8	41.3	39.7	39.3	93.3	93.5
11.00-20	114.8	112.0	42.8	41.7	39.4	39.5	93.0	93.0

**MACK WESTERN  
HAYWARD, CAL.**



**MACK TRUCKS, INC.  
ALLENTOWN, PA.**

"THE TRUCK CAPITAL OF THE WEST"

"THE TRUCK CAPITAL OF THE WORLD"







## NEW F-715 SERIES

- NEW MACK V-8 THERMODYNE
- NEW WEIGHTSAVING DESIGN
- FRONT AXLE FORWARD
- SHORT BUT ROOMY CAB
- HAULS MORE—DEPENDABLY



Sleeper Cab, CAS 40 shown (optional extra)

### FOUR & SIX WHEEL • MACK V-8 DIESEL • C.O.E. • TRACTORS

- Greater earnings from maximum length trailers within legal overall limit  
Standard cab 50" BBC handles West Coast double bottoms within 65' overall  
Sleeper cabs 72" or 80" BBC handle 40' trailers within 50' overall
- Dependable Mack diesel powerplant  
New Mack 255 horsepower V8
- Load distribution extremely favorable
- Front axle is forward for full advantage of bridge formula
- Compact turning circle
- Flexibility to meet every operating requirement through wide choice of components
- More strength with less chassis weight for more payload  
Weight-reduced (L) versions have aluminum frame optional
- Mack quality built components assure low maintenance and long trouble-free life
- Spacious cab interior despite short BBC length
- Cab experience designed—modern in appearance and extremely functional and safe  
High, wide windshield affords excellent visibility
- Excellent ease of accessibility for servicing  
Routine service possible without tilting cab

**AUTOLIT**



Automobile - Truck - Motorcycle 1900 to Present  
ORIGINAL Sales Brochures, Manuals, Books, Posters,  
Catalogs, and MUCH More. World's largest selection!

# F-715 SERIES SIX WHEEL - MACK DIESEL - TRACTORS

MODEL F-715ST  
ENGINE END 864  
CLUTCH CL 50

MODEL F-715LST  
ENGINE END 864  
CLUTCH CL 50

WHEELBASE—Std. 144" (LP 170"; CA 122")  
Opt. †165" (LP 191"; CA 143"); †186" (LP 270"; CA 164") †Min. WB with 5-speed trans. and auxiliary  
Opt. 244" (LP 342"; CA 222")

CAB—Std. CA 38 (50" BBC) C.O.E., forward tilting (no helper seat)  
Opt. CA 39 (72" BBC) Sleeper, C.O.E., forward tilting (includes mattress, curtains and helper seat)  
Opt. CA 40 (80" BBC) Sleeper, C.O.E., forward tilting (includes mattress, curtains and helper seat)

STEERING GEAR—Std. SG 261

ELECTRICAL—Std. 12 Volt, 55 Amp. Generator (24 Volt starting)  
Opt. 12 Volt, 55 Amp. Generator (heavy duty)  
Opt. 12 Volt, 60 Amp. Alternator (heavy duty) or 12 Volt, 85 Amp. Alternator (heavy duty)  
Opt. Air starting

WHEELS—Std. Cast Spoke  
Opt. Disc—Steel or Aluminum (alum. 10.00 tires only)

TIRES—Std. 10.00-20 (12P) on 7.5 Rims  
Opt. 10.00-22 (12P) on 7.5 Rims; 11.00-20 (12P) on 8.0 Rims

FRAME—Std. Chrome manganese steel, heat treated: 9"x3 1/2"x1/4" Sec. Mod.—9.76 (Not available on 244" WB)  
Opt. 10 1/2"x3 1/2"x1/4" Sec. Mod.—11.83 (Required for 244" W.B.)

TRANSMISSION—Std.	TRD 720	TRDL 720
Opt.	TRD 7250	TRDL 7250
Opt.	TRT 720	IRTL 720
Opt.	†TR 720 & B-L 8031P	†TR 720 & B-L 8035P
	‡Not available on 144" WB or 165" WB	‡Not available on 144" WB or 165" WB
FRONT AXLE—Std.	FA 511	FA 511
Opt.	FA 514 or FA 532	FA 512 or FA 532
Opt.	*FA 511, *FA 5141 or *FA 5321 *(No brakes)	*FA 5111, *FA 5141 or *FA 5321 *(No brakes)

BOGIE—Std. SWDL 56 (Camel-back suspension; Mack 6" brakes) Opt. SWDL 75 (Inverted camel-back suspension; Mack 6" brakes)  
Opt. SWDL 561 (Camel-back suspension; Mack 7" brakes) Opt. SWDL 751 (Inverted camel-back suspension; Mack 7" brakes)  
Opt. SWDL 563 (Camel-back suspension; Timken 6" brakes) Opt. SWD 75 (Inverted camel-back suspension; Timken 6" brakes)  
Opt. SWDL 564 (Camel-back suspension; Timken 7" brakes) Opt. SWD 751 (Inverted camel-back suspension; Timken 7" brake)  
Carriers CRDP 92 & CRD 93 and Ratios: 4.50, 4.76, 5.13, 5.73, 6.34, 7.00 same for above bogies.  
Note: Timken Stopmaster brakes have spring loaded Fail-Safe emergency brake, standard driveshaft brake omitted. Timken brakes include automatic brake adjustment feature.

FUEL TANK		
ROUND—Std.	(1) 51 gal., left side steel	(1) 51 gal., left side, aluminum
Opt.	(2) 51 gal., one each side, steel	(2) 51 gal., one each side, aluminum
Opt.	(2) 70 gal., one each side, aluminum	(2) 70 gal., one each side, aluminum
Opt.	(2) 70 gal., one each side, steel	

EQUIPMENT—Std.	Air brakes Air cleaner, oil burn Air Compressor Tu-Ho 500 Lube oil filter, Mack comb. full-flow by-pass Oil cooler Low air pressure, indicator, buzzer Clutch brake	Thermostat, 175° (two) Tachometer, single hand Front turn signals Automatic reset circuit breakers Horn, electric, single tone I.C.C. & marker lights Vertical exhaust	Engine water filter, Perry Rear view mirror, two, West Coast type Automatic radiator shutters Front shock absorbers (direct type) Semi-trailer connections Stop and tail light Solex windshield glass
Opt.	Spring loaded parking brake (incl. as std. with Stopmaster brakes) Break-away valve Power steering (SGP 40) Cab heater, fresh air type, 36,000 BTU Automatic drain valve Hand control valve Front wheel limiting valve Front springs, heavy duty Engine emergency stop control Air starting	Wig-wag low pressure indicator Full trailer brake & elec. conn. Bogie spacing, 53" (56 series) Horn, electric, dual tone Air Horn Front, bumper mounted tow shackles and pin (removable) Rear turn signals (lose) Engine exhaust brake Steps, left side, rd. fuel tank (access to rear of cab) Hubdollar	Underframe exhaust Tachographs (RPM and MPH) Extra Comb. stop-tail light Electric window lift, right side, driver and helper controlled Air-leaf front suspension (not recommended with FA 511) Helper seat (for CA 38) Brake alcohol evaporator Exhaust pyrometer Deluxe driver seat

Aluminum Parts:

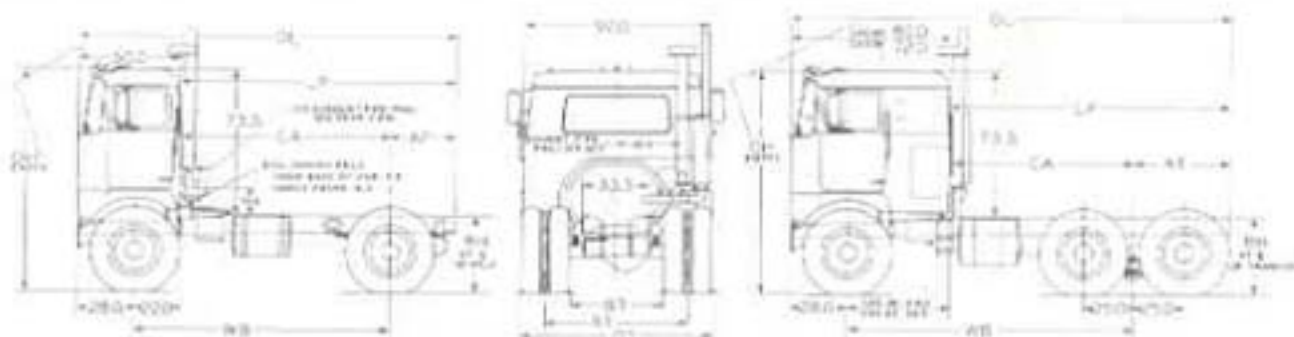
(additional for LST) Front bumper; transmission case; bogie brake  
spiders and chamber brackets; frame brackets; engine and front  
spring bracket; front engine support; air reservoir; fuel tank.

**AUTOLIT**



Automobile - Truck - Motorcycle 1900 to Present  
ORIGINAL Sales Brochures, Manuals, Books, Posters,  
Catalogs, and MUCH More. World's largest selection!

# MODELS F-715 SERIES



## FOUR WHEEL

WB	Standard Cab CA 38		Sleeper Cab CAS 39		Sleeper Cab CAS 40		AF	OL	Turning Circle Dia. (Outer edge of tire) Est.	
	LP	CA	LP	CA	LP	CA			Right	Left
									Right	Left
135	146	112	124	91	116	83	32	196	49 ft.	49 ft.
118	129	96	107	74	99	86	32	179	44 ft.	44 ft.
149	154	121	132	99	124	91	33	204	51 ft.	51 ft.
156	167	134	145	112	137	106	33	212	53 ft.	53 ft.
216	342	194	220	172	312	164	148	392	72 ft.	72 ft.

TIRE SIZE	OH Approx.	BH		OT	ET	BT
		Empty	Loaded			
		Spoke Wheels				
10.00-20	112.1	41.5	37.8	95.3	71.4	47.3
10.00-22	113.0	42.5	38.8	95.3	71.4	47.3
11.00-20	112.6	42.1	38.2	96	71.1	46.3
11.00-22	112.6	43.1	39.2	96	71.1	46.3

## SIX WHEEL

WB	Standard Cab CA 38		Sleeper Cab CAS 39		Sleeper Cab CAS 40		AF	OL	Turning Circle Dia. (Outer edge of tire) Est.	
	LP	CA	LP	CA	LP	CA			Right	Left
									Right	Left
130	176	128	134	106	146	96	48	224	59 ft.	59 ft.
155	191	143	169	121	161	112	48	241	64 ft.	64 ft.
186	270	164	248	142	240	134	106	320	72 ft.	72 ft.
244	342	222	320	200	312	192	120	392	88 ft.	88 ft.

TIRE SIZE	OH Approx.	BH Loaded		OT	ET	BT
		Spoke Wheels				
		SWD 75	SWD 54 SWD 75			
10.00-20	112.1	37.8	38.1	95.3	71.4	47.3
10.00-22	113	38.8	39.1	95.3	71.4	47.3
11.00-20	112.6	38.2	38.5	96	71.1	46.3

Chassis dimensions are in inches and are for standard chassis unless otherwise detailed.

Frame heights are subject to variations: 1" empty, 1 1/2" loaded.  
Cab 43" h/s increases OH by 2" for CA 38,  
2 1/2" for CAS 39 and 30" for CAS 40.

Specifications subject to change without notice.

Represented by:



**MACK TRUCKS, INC.**  
Plainfield, New Jersey

MACK TRUCKS WORLDWIDE LIMITED · Hamilton, Bermuda

MACK TRUCKS MANUFACTURING COMPANY  
OF CANADA LIMITED  
Toronto, Ontario, Canada

There being no general sales models of MACK products, values, costs and improvements are affected whenever sound development and thorough trial prove them to be advantageous. The right is therefore reserved to change specifications or prices without notice. Illustrations are not necessarily a representation of standard specifications.

PRINTED IN U.S.A.

THCF 84.C.P.P.

**AUTOLIT**



Automobile - Truck - Motorcycle 1900 to Present  
ORIGINAL Sales Brochures, Manuals, Books, Posters,  
Catalogs, and MUCH More. World's largest selection!



Sixteen Cab, CA3 40 shown (optional extra)

# MODELS

## F-731LT

## F-737LT

- DEPENDABLE DIESEL POWER
- WEIGHTSAVING DESIGN
- FRONT AXLE FORWARD
- SHORT BUT ROOMY CAB
- MACK BUILT COMPONENTS

### STANDARD EQUIPMENT

<b>WHEELBASE</b>	135" (LP 146"; CA 113")	
<b>ENGINE:</b> (Diesel)	<b>F-731LT</b>	<b>F-737LT</b>
Model (Cummins)	NH-220L	NH-250L
Type	Naturally aspirated; six cyl.	
Bore and stroke	5 1/8" x 6"	5 1/2" x 6"
Piston disp., cu. in.	743	855
Brake horsepower at rpm	220 @ 2100	250 @ 2100
Max. torque at rpm	606 @ 1600	685 @ 1500
Lube oil filter (4 qts.)	Cummins full-flow	
Lube Oil Cooler	Standard	
Air cleaner	Oil bath type	
Radiator, frontal area	700 sq. in.	
Water capacity, qts.	42	
Water conditioner	— Standard	
Fuel pump (PTG)	Cummins	
<b>FUEL TANK</b>	53 gal., left side, aluminum, rd.	
<b>ELECTRICAL SYSTEM</b>		
Generator	12 Volt, 55 Amp.	
Starting system	12 Volt	24 Volt
Batteries	(4) 6 Volt	
Plates per cell	23	
Amp. hr. @ 20 hr. rate	160	
Group number	4H	
<b>CLUTCH:</b>	<b>F-731LT</b>	<b>F-737LT</b>
Model (MACK)	CL 28	CL 50
Plates, dry	Single, 14 7/8"	Two, 14"
Area of engagement	253 sq. in.	416 sq. in.
<b>TRANSMISSION:</b>	<b>F-731LT</b>	<b>F-737LT</b>
Model (MACK)	TRDL 722	TRDL 7220
Type	10-spd.	9-spd.
<b>DRIVESHAFT:</b>	Direct	Overgear
Make and size	Spicer; 1700; 3 1/2" OD	
<b>FRONT AXLE:</b>		
Model (MACK)	FA 511	

Automatic radiator shutters  
Automatic reset circuit breakers  
Bumper, flush type  
Cab roof vent  
Headlights and parking lights  
Horn, electric, single tone  
I.C.C. & Marker lights  
Low air pressure indicator, buzzer type

**CHASSIS EQUIPMENT**  
Rear view mirror, two, West Coast type  
Shock absorbers, front direct type  
Stop and tail light  
Sun Visor, left side  
Tachometer, single hand  
Thermostat, 170°  
Trailer-conn., semi-trailer

### FOUR-WHEEL DIESEL COE TRACTOR

<b>REAR AXLE:</b>	
Model (MACK)	RADL 529
Carrier	CRD 117
Ratios	4.25, 4.62, 4.88, 5.43, 5.78, 6.36, 6.80, 7.48, 7.85

<b>SPRINGS, Semi-Elliptic</b>	<b>Front</b>	<b>Rear</b>
Size	54" x 3 1/2"	53 3/4" x 3"
Leaves, no. & thickness	10 @ 0.323"	6 @ 0.558" 2 @ 0.499"

<b>BRAKES:</b>	
Type	Air
Front	16 1/4" x 3" x 1/2" (204 sq. in.)
Rear	16 1/2" x 6" x 3/4" (414 sq. in.)
Parking	12" x 5" x 3/8" (139 sq. in.)
Air Compressor	Tu-Fla 500 (12 cu. ft.)
Air reservoir capacity	2235 cu. in. (approx.)

<b>WHEELS &amp; TIRES:</b>	
Wheels	Cast, spoke
Tires	10.00-20 (12P), 7.5 Rims

<b>STEERING GEAR:</b>	
Model	SG 261
Steering wheel diameter	22"
Ratio	28.4:1

<b>FRAME:</b>	
Size	9" x 3 1/4" x 1/4"
Material	Chrome-manganese steel, heat-treated
Section Modulus	9.76
Resisting bending moment	878,400 in. lbs. per rail

<b>CAB:</b>	
Model (MACK)	CA 38
Type (50" BBC)	Cab-over-engine

**STANDARD CHASSIS WEIGHT (LBS.):**  
(F-731LT) Front 6,900; Rear 3,590; Total 10,490  
(F-737LT) Front 7,080; Rear 3,590; Total 10,670

**ALUMINUM PARTS:** Front bumper; angle flywheel housing; transmission case; rear brake spiders and chamber brackets; frame brackets (except rear spring rear hangers); front engine support crossmember; air reservoir; fuel tank

## MACK TRUCKS, INC.

# AUTOLIT



Automobile - Truck - Motorcycle 1900 to Present  
ORIGINAL Sales Brochures, Manuals, Books, Posters,  
Catalogs, and MUCH More. World's largest selection!

# OPTIONAL EQUIPMENT

# MODELS F-731LT & F-737LT

## WHEELBASE

\*Only with RADL 515 or RADL 5153

<b>CLUTCH:</b>	F-731LT
Model (MACK)	CL 50 (with clutch brake)
Type	Two-plate, dry, 14" OD
Area of engagement	416 sq. in.

## TRANSMISSION: (MACK)

TRQL 7230	9-spd., overgear, Duplex
TRDL 7225	10-spd., direct, Unishift
TRDL 72250	9-spd., overgear, Unishift
TRTL 722	15-spd., direct, Triplex
TRTL 7220	13-spd., overgear, Triplex
TRQL 7220	18-spd., overgear, Quadrivalex
PFO, compound case	TRQL 7220

Overgear transmission required when GCW exceeds 72,000 lbs.

## FRONT AXLE: (MACK)

FA 512	Springs, (12) .333"
FAL 532	Springs, (11) .360"
Springs, heavy duty,	FA 511 (12) .333"    FA 512 (11) .360"    FAL 532 (14) .360"

## REAR AXLE: (MACK)

MODEL	CARRIER	RATIO
RADL 5291	CRD 117	Same as std. RADL 529
RADL 533	CRD 119	4.60, 4.99, 5.52, 5.98, 6.52, 7.21, 7.81
RADL 515	CRD 91	4.39, 5.07, 5.46, 5.95, 6.45, 7.03, 7.48
RADL 5153	CRD 91	Same as RADL 515

RADL 533, RADL 515 or RADL 5153 required when GCW exceeds 72,000 lbs.

## BRAKES: (MACK)

FA 512, FAL 532	16 1/2" x 4" x 3/8" (276)
RADL 515	16 1/2" x 6" x 3/8" (414)
RADL 5291, RADL 533, RADL 5153	16 1/2" x 7" x 3/8" (476)

## FRAME:

Size	10 1/2" x 3 1/4" x 1/4"
Section Modulus	11.83
Resisting bending moment	1,064,700 in. lbs. per rail

## ELECTRICAL SYSTEMS:

Starting (F-731)	24 Volt
Generator	12 Volt, 55 Amp. (heavy-duty)
Alternator	12 Volt, 62 Amp.
Alternator	12 Volt, 85 Amp. (heavy-duty)

## CAB: (MACK)

CAS 39	Sleeper, incl. mattress (72" 88C)
CAS 40	Sleeper, incl. mattress (80" 88C)

Cabs include: Halper seat and arm rest, sleeping compartment window

## WHEELS & TIRES:

Disc (7.5 Rims)	Alum.; Hi-Tensile or Accu-Ride
18.0 Rims	Steel
Tires and Rims	10.00-22 (12P), 7.5 11.00-20 or 11.00-22 (12P), 8.0

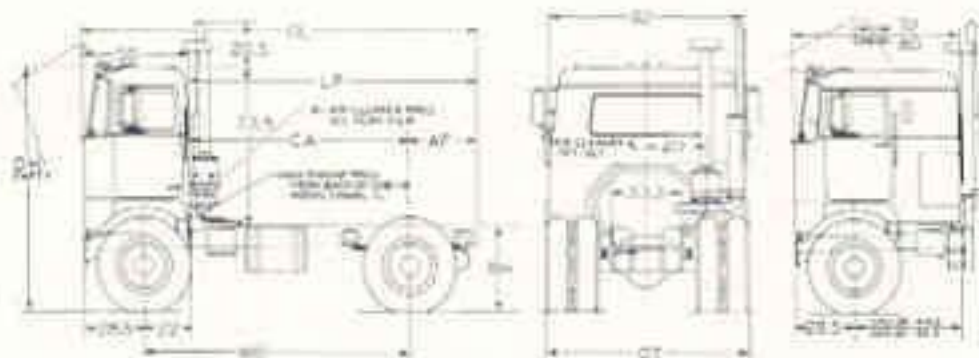
## FUEL TANKS:

Aluminum, Round	51, right side
The following are in place of standard: min. WE 125"	
Aluminum, Round	70, one each side

## CHASSIS EQUIPMENT

Air starting	Differential, Mack Power Drive for Work Dual Reduction carrier	Hydraulic Jack 8- or 12-ton	Stop and tail light, extra
Automatic drain valve	Engine lube oil filter	Power steering	Sun visor, right side
Break-away safety valve	Luberliner 500C or 750C	Pyrometer	Tachograph (RPM and/or MPH)
Cab air conditioning, roof mounted	Engine water conditioner (F-731)	Radiator, 1000 sq. in. cooling system 32-std.)	Tow stack, bumper w/d. (removable)
Cab heater, 28,000 btu (std. cab)	Front wheel brake limiting valve	Eider's seat arm rest	Trailer conn., full trailer (no hose)
Cab heater, two, 28,400 (total)	Hood control valve	Sleeper bunk safety strap	Turn signals, rear (base)
4th (sleeper cab)	Halper seat (for CA-38)	Spring loaded parking brake (with or w/o std. direct-shift brake)	Underframe exhaust
Chrome plated grill	Horn, electric, dual tone	Step for left side, round fuel tank (for access to rear of cab)	Wig-Wag low air pressure indicator
Driver's seat — Swanson, Viking	Horn, air, twin or single		Window (rear) in sleeper cab
1-800 American Model	Hubdamper		Windshield wipers
Union-Action, General, #107			

Specifications subject to change without notice. Illustrations are not necessarily a representation of standard specifications.



F-731, F-737 (A) 14.4" (B) 13.7" (C) 20.8"

WB	Standard Cab		Sleeper Cab		Sleeper Cab		AF	DL	Turning Circle Dia. (Over edge of lead tire)	
	CA 28		CAS 39		CAS 40				Right	Left
	IP	CA	IP	CA	IP	CA				
125	146	113	124	91	118	83	33	198.5	37 ft.	37 ft.
118	129	96	107	74	99	66	33	179.5	46 ft.	46 ft.
143	154	121	132	99	124	91	33	204.5	53 ft.	53 ft.
156	167	134	145	112	137	104	33	217.5	57 ft.	57 ft.

TIRE SIZE	OH Approx.	RH		OT
		Empty	Loaded	
10.00-20	112.1	41.3	37.5	93.3
10.00-22	112.0	42.3	38.3	93.3
11.00-20	112.6	41.9	36.1	96
11.00-22	113.6	43.8	39.1	96

Chassis dimensions are in inches and are for standard chassis unless otherwise denoted.

Frame heights are subject to variation: 1" empty, 1/2" loaded.

MACK TRUCKS, INC. • Monroeville, New Jersey  
MACK TRUCKS WORLDWIDE LIMITED • Hamilton, Bermuda

MACK TRUCKS MANUFACTURING COMPANY OF CANADA LIMITED • Toronto, Ontario, Canada

PRINTED IN U.S.A.

L2-64 (EM-KP)

# AUTOLIT



Automobile - Truck - Motorcycle 1900 to Present  
ORIGINAL Sales Brochures, Manuals, Books, Posters,  
Catalogs, and MUCH More. World's largest selection!



(Sleeper Cab, CAS 40 shown (optional extra))

# MODEL

# F-763ST

- DEPENDABLE DIESEL POWER
- FRONT AXE FORWARD
- SHORT BUT ROOMY CAB
- MACK BUILT COMPONENTS

## STANDARD EQUIPMENT

**WHEELBASE** \*150" (LP 176"; CA 128")

\*150" WB available only when logic has spring loaded emergency brake. Standard driveshaft brake omitted.

**ENGINE:** (Cummins Diesel) **NTC-335**

Type ..... Turbocharged, six cyl.

Bore and stroke ..... 5 1/2" x 6"

**Piston displacement, cu. in.** ..... **855**

**Brake horsepower at 2100 rpm** ..... **335**

**Max. torque at 1600 rpm** ..... **930 lb.-ft.**

Lube oil filter (14 qts.)

Cummins full-flow & By-Pass (750 size)

Lube oil Cooler ..... Standard

Air cleaner ..... Oil bath type

Radiator, frontal area ..... 1110 sq. in.

Water capacity, qts. .... 60

Water conditioner ..... Standard

Fuel pump (PTG) ..... Cummins

**FUEL TANK** ..... **51 gal.,** left side, steel, rd.

**ELECTRICAL SYSTEM:** Generator ..... **12 Volt, 55 Amp.**

Starting system ..... 24 Volt

Batteries (4 H group) ..... (4) 6 Volt

Plates per cell 23; Amp. hr. @ 20 hr. rate ..... 160

**CLUTCH:** (MACK) ..... **CL 50** (with clutch brake)

Plates, dry ..... Two, 14"

Area of engagement ..... 416 sq. in.

**TRANSMISSION:** (MACK) ..... **TRT 7220**

Type ..... 13-spd., overgear, Triplex

### CHASSIS-EQUIPMENT

Automatic radiator shutters  
Automatic reset circuit breakers  
Bumper, flush type  
Cab roof vent  
Headlights and parking lights  
Horn, electric, single tone  
I.C.C. & Marker lights  
Low air pressure indicator, buzzer

Rear view mirror, two, West Coast type  
Shock absorbers, front direct type  
Stop and tail light  
Sun visor, left side  
Tachometer, single hand  
Thermostat, 170°  
Trailer conn., semi-trailer

## SIX-WHEEL DIESEL COE TRACTOR

### DRIVESHAFT:

Make and size ..... Spicer; 1700; 3 1/2" OD

**FRONT AXLE:** (MACK) ..... **FA 534**

**BOGIE:** (MACK) ..... **SWDL 56**

Carriers (Dual Reduction) ..... CRDP 92 & CRD 93

Ratios ..... 4.50, 4.76, 5.13; 5.73, 6.34, 7.00

### SPRINGS:

Size ..... Front 34" x 3 1/2" Rear 50" x 4"

Leaves, no. & thickness ..... 10 @ 0.323" 9 @ 0.625"

**BRAKES:** Type ..... **Air**

Front ..... 16 1/2" x 3" (204 sq. in.)

Rear ..... 16 1/2" x 6" (828 sq. in.)

Parking ..... 12" x 5" (139 sq. in.)

Air Compressor ..... Tu-Fla 500 (12 cu. ft.)

Air reservoir capacity ..... 2960 cu. in. (approx.)

### WHEELS & TIRES:

Wheels ..... Cast, spoke

Tires ..... 10.00-20 (12P), 7.5 Rims

**STEERING GEAR:** Model ..... **SG 261**

Steering wheel diameter, ratio ..... 22", 28.4:1

**FRAME:** Size ..... **9" x 3 1/4" x 1/4"**

Material ..... Chrome-manganese steel, heat-treated

Section Modulus ..... 9.76

Resisting bending moment ..... 878,400 in. lbs. per rail

**CAB:** (MACK) ..... **CA 38**

Type (50" BBC) ..... Cab-over-engine

### STANDARD CHASSIS WEIGHT (LBS.):

Front 7,675; Rear 6,850; Total 14,555

## MACK TRUCKS, INC.

# AUTOLIT



Automobile - Truck - Motorcycle 1900 to Present  
ORIGINAL Sales Brochures, Manuals, Books, Posters,  
Catalogs, and MUCH More. World's largest selection!

**WHEELBASE:** 165", 186", 244"

(See dimensional chart for LF & CA)  
 \*Minimum wheelbase with 3-Speed Transmission and Auxiliary

**ENGINE:** (Cummins, Diesel) NTC-335  
 HP @ 2100 rpm (gov.) 280  
 Max. torque @ 1500 rpm 810 lb.-ft.

**TRANSMISSION:** (MACK)  
 TR 7220 & BL 8031P 5-spd., overgear with 3-spd. aux.  
 TRQ 7220 18-spd., overgear, Quadruplex

**FRONT AXLE:** (MACK)  
 FA 535 Springs: (12) 323"  
 FA 532 Springs: (11) 360"  
 FA 5341, FA 5351, FA 5321 \*No brakes  
 \*Customer responsibility.  
 Springs, heavy duty, FA 534 (12) 323"  
 FA 535 (11) 360"  
 FA 532 (14) 360"

**BOGIE:** (MACK) same as except for  
 SWDL 561 SWDL 56 7" brakes  
 SWDL 563 SWDL 56 Timken 6" brakes  
 SWDL 564 SWDL 56 Timken 7" brakes  
 SWDL 75 SWDL 56 Inverted Camel-back springs  
 SWDL 751 SWDL 75 7" brakes  
 SWD 75 SWDL 75 Timken 6" brakes  
 SWD 751 SWDL 75 Timken 7" brakes  
 SPRINGS (SWDL 75, SWD 75) 50" x 4", 8 leaves @ 0.625"  
 Carriers and ratios same as standard

**BRAKES:** (MACK)  
 FA 535, FA 532 16 1/2" x 4" (276)  
 SWDL 75 16 1/2" x 6" (828)  
 SWDL 561, 751 16 1/2" x 7" (952)

**BRAKES:** (Timken, Stopmaster)  
 SWDL 563, SWD 75 15" x 6" (754)  
 SWDL 564, SWD 751 15" x 7" (880)  
 Timken brakes include automatic brake adjustment, four spring loaded, fail safe auxiliary brake units per bogie. STANDARD driveshaft brake omitted.

**FRAME:** (Required for 244" WB)  
 Size 10 1/2" x 3 1/4" x 1/4"  
 Section Modulus 11.83  
 Resisting bending moment 1,064,700 in. lbs. per rail

**ELECTRICAL SYSTEMS:**  
 Alternator 12 Volt, 62 Amp.  
 Alternator 12 Volt, 85 Amp. (heavy-duty)

**CAB:** (MACK)  
 CAS 39 Sleeper, incl. mattress (72" BBC)  
 CAS 40 Sleeper, incl. mattress (80" BBC)  
 Cabs include: Helper seat and arm rest; sleeping compartment curtain

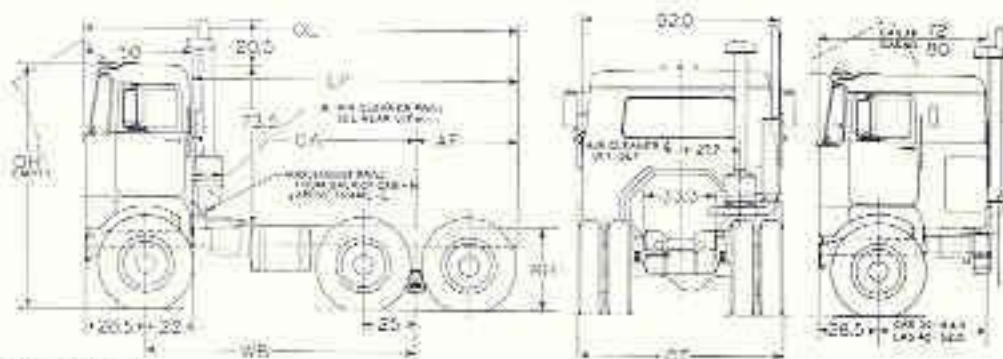
**WHEELS & TIRES**  
 Disc (7.5 Rims) Alum., Hi-Tensile or Accu-Ride  
 (8.0 Rims) Steel  
 Tires and Rims 10.00-22 (12P), 7.5  
 11.00-20 (12P), 8.0

**FUEL TANKS:**  
 Steel, Round 51, right side  
 The following are in place of standard  
 Steel, Round 70, one each side

**CHASSIS EQUIPMENT**

- Air starting
- Automatic drain valve
- Bogie spacing, 35" (SWDL 56 series)
- Break-away safety valve
- Cab air conditioning, roof mounted
- Cab heater, 28,000 btu (std. cab)
- Cab heaters, two, 36,400 (1000) btu (sleeper cabs)
- Chrome plated grill
- Driver's seat — Beacom, Viking
- T-bar, American Metal, Union-Acton, General #107
- Engine lube oil filler
- Lubefiner 730C
- Front wheel brake limiting valve
- Hand control valve
- Helper seat (for CA 38)
- Horn, air, twin or single
- Horn, electric, dual tone
- Hydromator
- Hydraulic jack 8- or 12-ton
- Power steering
- Pyrometer
- Rider's seat arm rest
- Sleeper bunk safety strap
- Spring loaded parking brake (with or w/o std. driveshaft brake)
- Stop for left side, round fuel tank (for access to rear of cab)
- Stop and tail light, extra
- Sun visor, right side
- Tachograph (RPM and/or MPH)
- Tow shackle, bumper mt'd (removable)
- Trailer conn., full trailer (no hose)
- Turn signals, rear (loose)
- Underframe exhaust
- Wig-Wag low air pressure indicator
- Window (rear) in sleeper cabs
- Windshield washers

Specifications subject to change without notice. Illustrations are not necessarily a representation of standard specifications.



F-763: (A) 16" (B) 15.1" (C) 14.3"

WB	Standard Cab		Sleeper Cab		Sleeper Cab		AF	QL	Turning Circle Dia. (Outer edge of tire) (ft.)	
	CA 38		CAS 39		CAS 40				Right	Left
	LF	CA	LF	CA	LF	CA				
150	176	128	154	106	146	98	88	226.5	59 ft.	59 ft.
163	191	143	169	121	161	113	48	241.5	65 ft.	65 ft.
186	270	164	248	142	240	124	106	290.5	71 ft.	71 ft.
244	343	222	320	200	312	192	120	392.5	88 ft.	88 ft.

TIRE SIZE	OH Approx.	RH				OT
		Empty		Loaded		
		SWDL 56	SWDL 75	SWDL 56	SWDL 75	
10.00-20	112.1	40.5	40.6	37.9	38.1	95.3
10.00-22	113.1	41.5	41.6	38.9	39.1	95.3
11.00-20	112.7	41.1	41.2	38.3	38.5	96

Chassis dimensions are in inches and are for standard chassis unless otherwise denoted.

Frame heights are subject to variations: 1" empty; 1/2" loaded.





CAS40 SLEEPER TILT CAB  
30" SLEEPER COMPARTMENT, 80.5" BBC.

**F785RS  
MACK**  
ENDT675 MAXIDYNE  
DIESEL POWERED  
SIX WHEEL CHASSIS

### SPECIFICATIONS

#### STANDARD EQUIPMENT

**WHEELBASE** . . . 144", 165", 186", 244"

**ENGINE**, Mack Diesel . . . ENDT675 Maxidyne.

Type . . . Turbocharged, In-Line 6 Cyl.

Bore & Stroke . . . 4.875" x 6"

Piston Displacement, Cu. Ins. . . . . 672

Max. Brake Horsepower . . . . . 237

Max. Torque @ 1200 r.p.m. . . . . 300

Lube Oil Filter (10 qts.) Comb. full-flow  
by-pass

Air Cleaner . . . Dry Type.

Radiator, Frontal Area . . . 1000 Sq. Ins.

Water Capacity . . . 15 galls.

Thermostat, to open 170°

Fuel Pump . . . American Bosch, APE 6'

Fuel Tanks (Imp. Galls) 1 x 58, 1 x 44

**STARTING SYSTEM** . . . Air

**ELECTRICAL SYSTEM** . . . 12V, 55 Amp.

**CLUTCH** . . . CL74

Type . . . 2 Plate

Area of Engagement . . . 420 Sq. Ins.

**TRANSMISSION** (Mack Maxitorque TRDXL1170)

Type . . . Six Speed, Triple Countershaft,  
Overgear.

Ratio range . . . Low 8.59 to .62 Overgear.

Optional TR1107, 5 speed, 5th direct Triple  
Countershaft.

**BOGIE** (Mack) . . . SW05711

Carriers (Dual Reduction) CRDP92 & CRD93

Ratio . . . 7.00, 7.49, 8.24, 9.15

Nominal Capacity at Ground . . . 40,000 lbs.

#### DRIVESHAFT

Make & Size . . . Spicer 1800 Series

**FRONT AXLE** (Mack) . . . FA532

Type Reverse Elliot, Drop-Forged I Beam.

Nominal Capacity at Ground . . . 12,000 lbs.

#### SPRINGS

	Front	Rear
Size	54" x 3.5"	50" x 4"
No. of Leaves & thickness	10" x .323"	10 x .788"

**BRAKES** Type . . . Air

Front . . . . . 16.5" x 4" (276 Sq. Ins)

Rear . . . . . 16.5" x 7" (952 Sq. Ins)

Air Compressor . . . Tu Flo 500 (12 Cu. Ft.)

Air Reservoir Capacity . . . . . 3000 Cu. Ins. (approx.)

#### WHEELS & TYRES

Wheels . . . . . Cast Spoke

Tyres . . . 10.00 x 20 x 12-ply (11) (Aust. Manufacture)  
Bms, 7.5"

**STEERING GEAR** . . . . . Sheppard Power Type

Steering Wheel dia, Ratio 20", 31.4 : 1

#### FRAME

Size	Material	Section Modulus
9" x 3.25" x .25"	Heat Treated Alloy Steel	0.70

**CAB** (Mack) . . . CAS40

Type . . . . . Tilt-Sleeper, 80.5" BBC

30" Sleeper Compartment

Draw Curtains

Reading Light

Cab Tilt Angle, 40°

Optional . . . CA38 Tilt Non-Sleeper 50.5" BBC

**AUTOLIT**



Automobile - Truck - Motorcycle 1900 to Present  
ORIGINAL Sales Brochures, Manuals, Books, Posters,  
Catalogs, and MUCH More. World's largest selection!





CA38 NON-SLEEPER TILT CAB  
50.5" BBC

**MACK  
F785R5**

**ENDT675 MAXIDYNE  
DIESEL POWERED  
SIX WHEEL CHASSIS**

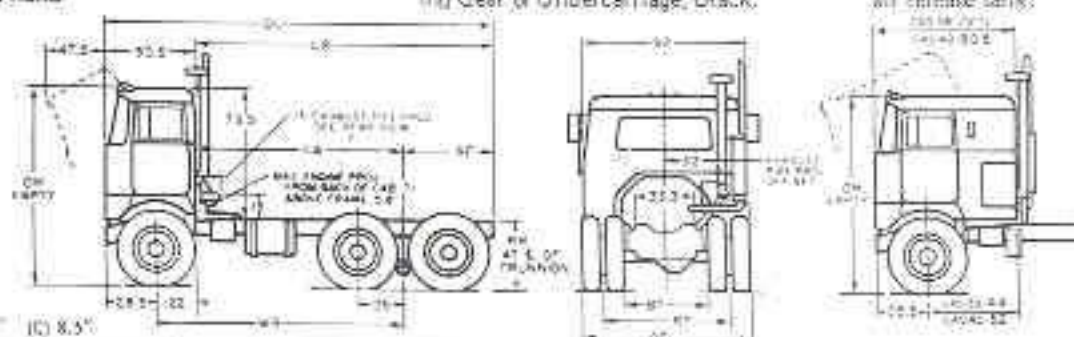
**CHASSIS AND CAB EQUIPMENT (Common to Both Cab Types)**

Automatic Radiator Shutters  
Flush Type Front Bumper  
Automatic reset circuit breaker  
Cab roof vent  
Air Horn  
I.C.C. and Marker Lamps  
Front Parking Lamps  
Front Turn Indicator Lamps  
Clearance Lamps  
Stop & Tail Lamps  
Automatic Back up Lamp  
Interior Sun Visor, driver's side  
Tachometer, single hand

Speedometer  
Breakaway Safety Valve  
Hand Control Brake Valve  
Semi-Trailer Brake & Electrical connections  
Dual Windshield Wipers, air, single motor  
Windshield Washers  
Aerospip Flex Lines, Oil, Air & Fuel  
Exhaust Pyrometer  
Voltmeter  
Bestrom Viking T-Bar Driver's Seat  
Paintwork: Single Colour to Client's choice, variations, optional extra Running Gear & Undercarriage, Black.

Low Air pressure indicator, buzzer type  
Dual West Coast Rear Vision Mirrors  
Front Shock Absorbers  
Solex Windshield  
Vertical Exhaust  
12 ton Jack, Handle, Wheel Wrench  
Front Towing Shackles  
Isolated Air Brake Reservoir  
M.G.M. Auxiliary Spring Brake with

separate  
air release tank;



WB	Standard Cab		Merger Cab		AF	DL	Turning Circle Dia.	
	CA 38	CA	CA 30	CA			Right	Left
132	170	122	140	90	48	229.5	57 ft.	57 ft.
155	191	143	161	113	48	241.5	65 ft.	65 ft.
185	220	164	240	134	166	320.5	71 ft.	71 ft.
244	349	292	312	193	170	392.5	88 ft.	88 ft.

TIRE	WB	GM Approx.	RR				CY
			Empty		Loaded		
			Swch 25	Swch 27	Swch 25	Swch 27	
10.00-20	20	114.5	40.5	40.8	37.8	38.1	85.3
10.00-22	22	115.7	41.5	41.8	38.8	39.1	85.7
11.00-20	20	115.3	41.1	41.2	38.3	38.5	86

Chassis dimensions are in inches and are for standard chassis unless otherwise denoted.

Frame heights are subject to variation 1" empty, 1/2" loaded.



Illustrations & Specifications may be subject to change without notice.

**MACK TRUCKS Australia Pty. Ltd.**

1728 Ipswich Road, Rocklea, Queensland Q. 4106

Telephone: Brisbane 471644

Telegrams: Macktrucks, Brisbane

**AUTOLIT**



Automobile - Truck - Motorcycle 1900 to Present  
ORIGINAL Sales Brochures, Manuals, Books, Posters,  
Catalogs, and MUCH More. World's largest selection!

1870.