

# THE FINEST IN THE FIELD

TERRAGATOR® SELF-PROPELLED APPLICATION EQUIPMENT | MODELS 6303 • 8303



TerraGator 6303 • 8303

## TABLE OF CONTENTS

<b>CVT</b> .....	<b>4</b>
AGCO's CVT provides access to power ranges and speed choices normally hidden in the gaps between traditional Powershift gears.	
<b>Proven Engine Technology</b> .....	<b>6</b>
An Electronic Engine Management 3 (EEM3) system ensures accurate and precise timing of fuel flow for incredibly efficient use of resources.	
<b>Interior Cab Layout</b> .....	<b>8</b>
Panoramic views, conveniently placed controls and a comfortable seat combine to provide a cab so comfortable you'll almost forget you're out in the field.	
<b>Strong, One-Piece Chassis</b> .....	<b>10</b>
Cold-rolled, 4"x12" steel provides the foundation for superior strength and durability.	
<b>Liquid Systems</b> .....	<b>12</b>
Streamlined plumbing and a choice of two types of spray booms deliver product with professional accuracy.	
<b>Dry Systems</b> .....	<b>14</b>
Single or multiple bin systems offer the flexibility to spread just about any kind of product. Available co-application systems offer even more choices.	
<b>Technology Solutions</b> .....	<b>16</b>
Precision application performance has become even easier with advancements in guidance and control systems.	
<b>Specifications</b> .....	<b>18</b>
Horsepower, Torque, Hydraulics, Fluid Capacities and more.	





## **TERRAGATOR 6303 AND 8303 MODELS: ADVANCED SELF-PROPELLED APPLICATORS**

### **NEW Continuously Variable Transmission (CVT)**

TerraGator now features a Continuously Variable Transmission that provides more usable power, better fuel economy and a smoother driving experience than a traditional automatic transmission.

### **NEW AGCO SISUPower™ 8.4 CTA 4V**

Sisu is a Finnish term loosely translated into English as strength of will, determination, perseverance, and acting rationally in the face of adversity. You'll find all these qualities and more in this engine proudly built in Linnavuori, Finland.

### **NEW Interior Cab Layout**

From the six-post cab design to the ergonomically placed controls, everything about our state-of-the-art application cab is designed with operator comfort and productivity in mind.

### **NEW Longer Chassis**

Just when you thought it couldn't get any better, we've added 25" inches to the chassis. The longer wheelbase helps deliver a smoother ride for better handling and increased productivity.

AGCO Application Equipment continues to build on a 50-year heritage of designing equipment that meets and exceeds the demands of professionals who depend on their machines to get the job done. Our unwavering commitment to offering the very best line of innovative application tools and providing you with advanced technology solutions is unmatched. Simply put, every one of our machines is engineered from the ground up to do one job, and do it better than any other applicator in the industry. Durable, dependable, professional are more than just words – they are the core principles at the foundation of every piece of equipment we build.



# SIMPLY ADVANCED

TerraGator 6303/8303 models now feature AGCO's industry-leading Continuously Variable Transmission (CVT). Significantly more efficient than any other mechanical transmission, our CVT transmission has been used in more than 150,000 off-road agricultural vehicle applications since it was first introduced in 1996.

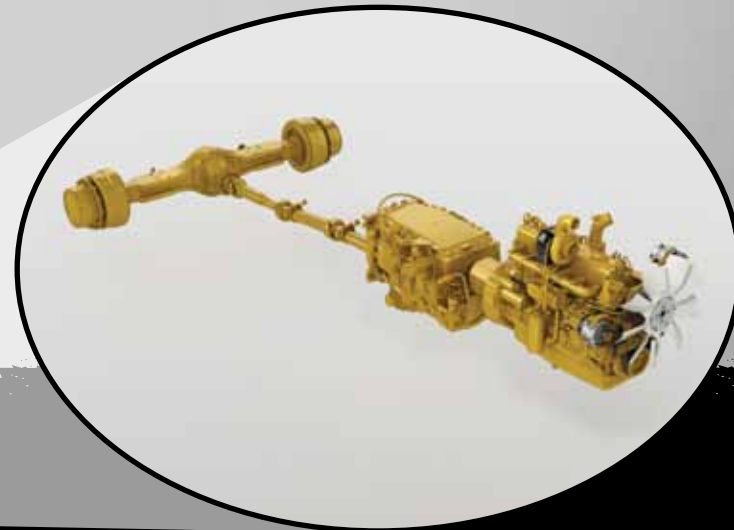
In fact, it allows the operator to set any forward speed at any engine rpm, to provide precision control, superb quality of work and maximum productivity at all times. Excellent fuel economy and reduced driver stress are other major bonuses.

The CVT gives the operator flexibility in driving modes with operation controlled by the foot pedal or joystick, or by the Power Shuttle lever. The power shuttle lever provides seamless forward and reverse

shuttling, an active standstill (de-clutch) mode, and also allows the operator to change the speed in either direction by simply pushing the lever forward or pulling it back.

The advanced TerraGator Management feature maintains an 'intelligent' electronic link between engine and transmission — using pedal or lever modes — to automatically optimize engine speed through the entire engine revs/speed range, so that the preset forward speed is sustained. Output goes up and fuel consumption down as a result.

The CVT also ensures that firm, continuous traction is applied, minimizing wheelslip and therefore any disturbance of the soil or grass surface. Quick and easy to input the settings, this advanced automatic feature constantly monitors for optimum performance, leaving the operator free to concentrate on other aspects of the task at hand.



AGCO CVT is an industry leader from AGCO, with more than 15 years of experience and more than 150,000 CVT transmissions in service worldwide. You may see imitations, but there's not another transmission in existence that rivals the simplicity and performance of AGCO CVT.



## EXPERIENCE THE CVT ADVANTAGE

- The fewest number of moving parts of any mechanical transmission in the industry for longer life, greater resale value and less potential for downtime.
- A separate hydraulic reservoir for the transmission isolates the transmission from other hydraulic systems and minimizes the chance for contamination.
- The service-friendly design allows service technicians to perform diagnostic tests using the AGCO EDT electronic diagnostic tool.
- The ability to set four field cruise speeds — two in each of the two ranges — at the push of a button on the console.



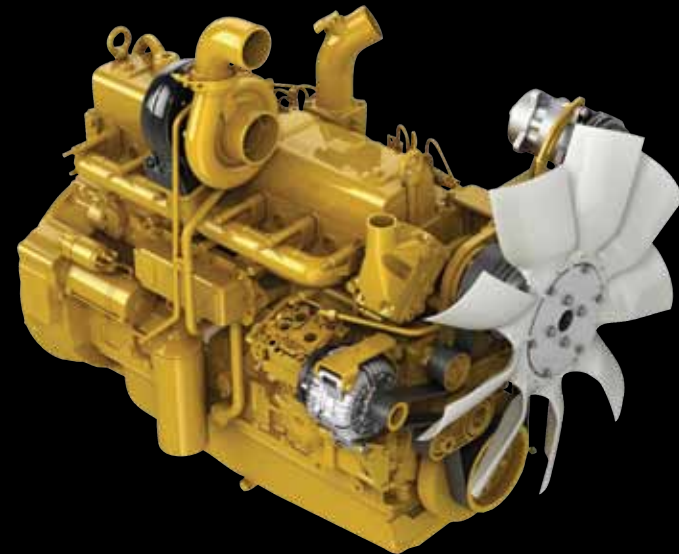
A constant ground speed is critical for accuracy. By using both its mechanical and hydraulic capabilities at the same time, the AGCO CVT not only operates more efficiently, but it does so without preset gear limits, providing the operator with speed choices normally hidden in the areas between gears. There's no shifting of gears, no jerks and no delay in traction or power — just infinite speed control from creep to transport speed.

# PROVEN ENGINE TECHNOLOGY

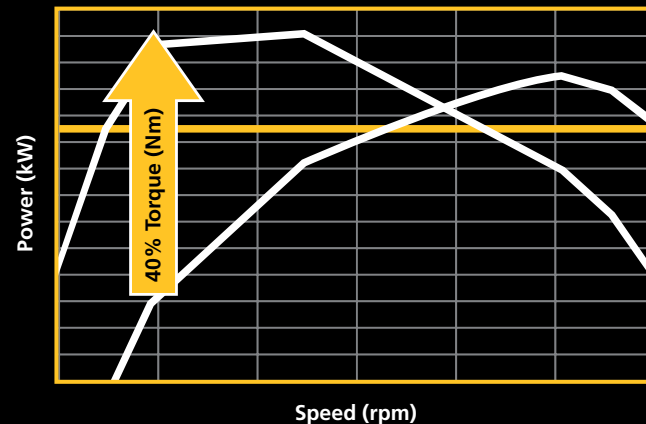
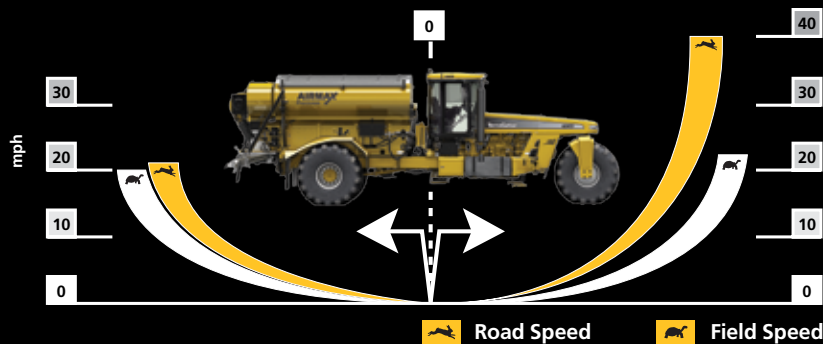
Durable, dependable and professional are taken to a whole new level with a powerful, efficient, and clean AGCO SISUPower diesel engine at the heart of every TerraGator 6303/8303. The six-cylinder, 8.4 liter power units are the perfect match for AGCO's Continuously Variable Transmission. Each engine is team assembled by hand and starts with a single-piece, cast iron block for exceptional structural strength. A balanced engine offers great advantages for smooth power and longevity; and the wet, replaceable cylinder liners dissipate engine heat more evenly.

These highly efficient engines also incorporate an Electronic Engine Management 3 (EEM3) system, developed exclusively for AGCO SISUPower engines. The EEM3 system ensures accurate and precise timing of fuel flow to the injectors for incredibly efficient use of resources. They offer clean power without compromises and are able to meet the most demanding applications thanks to their robust construction and proven reliability.

AGCO SISUPower has been manufacturing durable and environmentally friendly off-highway diesel engines for more than 60 years. The company serves a worldwide market, and has a heritage steeped in advanced diesel technologies. Renowned for their fuel-efficient operation, these engines are well-proven in a large variety of applications, including a broad range of tractors and combine harvesters.



An information plate is attached to each engine containing details about the engine such as the model, serial number, dyno horsepower, and the person or team by whom it was assembled. Our teams are proud to sign their name to their work and demonstrate that the utmost quality went into the assembly of the engine.











# CONTROL NEVER FELT SO GOOD

Our 6-post design offers exceptional visibility and is the industry's only cab engineered specifically for application equipment. Positive cab pressure is maintained by a separate pressurization unit to maintain a comfortable working operator environment. A three-stage filtration process, with both internal and external filters and active carbon cleaning, keeps the air inside the cab virtually dust and odor free.

The adjustable floating right-hand armrest conveniently holds all functions needed for field operations and moves with the seat so the operator never has to search for the proper control.

Standard comfort features include:

- Shock and vibration isolation materials used wherever possible.
- Sound dampening materials reduce noise entering from the cab floor.
- 8 multi-level vents and automatic temperature control produce a comfortable in-cab temperature.
- Three-way dome lighting, auxiliary radio mount, in-cab storage, multiple power outlets.



Our semi-active deluxe seat is now standard on all TerraGators for improved operator comfort. The seat allows for real-time automatic dampening force to match field terrain and operator preference.

The boom control switches and additional presets are laid out so they are within easy reach of the operator, with the most commonly used switches logically placed.

Operations are made even easier with a joystick that can be used to manage ground speed and serves as a convenient location for the master apply switch to control application functions.

More than 60 square feet of glass, including lower front corner windows, let you keep an eye on the field and equipment, no matter which way you look.

# STRONG, ONE-PIECE CHASSIS

Designed for big acreage and maximum versatility, every TerraGator 6303/8303 is built to be more durable than any other applicator. The main chassis beams are single lengths of high grade, low alloy, rectangular tubular steel. The cold-rolled 4" x 12" steel is internally pressurized to create superior strength and durability. This provides TerraGator with an advantage over frames that are cut and re-welded by reducing metal stress. The frame is designed to minimize stress concentration and allow for flex during field operations.

The chassis is now 25" longer than previous models. The increase in overall chassis length also resulted in a corresponding increase in wheelbase with superior ride characteristics. While the longer chassis slightly increases the overall turning radius, TerraGator maintains the ability to turn inside any application spread width of 45' or more.



You won't find any modified truck axles on a TerraGator. Rugged Axle Tech™ off-road axles, designed specifically for use with high-flotation tires, carry even the heaviest load with strength and stability. In fact, they handle the highest load ratings in the industry. And the dynamic, load-sensing steering features an anti-kickback design that keeps the shock loads of rough ground from transferring from the axles to the steering wheel and the operator.







TerraGator's industry-leading paint and finish process provides years of protection from rust and corrosion. The chassis is shot blasted, degreased and phosphate treated prior to painting for maximum paint adhesion and corrosion resistance.

Each component is individually painted prior to assembly with a rust-inhibiting epoxy and primer as well as a high gloss acrylic urethane topcoat using an airless, electrostatic spray process for maximum penetration and coverage with no metal-on-metal exposure. This provides exceptional resistance to chemical, humidity, sun and weather conditions to keep your machine looking great for years.

Daily maintenance has never been easier with a redesigned radiator front access panel. Upper and lower slide channels and grab handles make inspecting and cleaning the radiator a one-person job without having to use tools.



TerraGator 3-wheeled floaters are built to handle anything you can dish out. Durable, solid steel construction with two heavy-duty, self-aligning roller bearings ensure smooth turns and solid support. High flotation tires provide a smoother ride over rough terrain and keep you moving even in muddy conditions.

# LIQUID SYSTEMS

Designed for big acreage and maximum versatility, when your TerraGator is equipped with a liquid system it can handle just about any field you throw at it. Durable 1,800-gallon stainless steel product tanks, a stainless steel 60-gallon foam marker and a conveniently located eductor all combine to create a professional liquid delivery system.

- The streamlined plumbing is designed for easy access and cleanout and delivers professional results with improved product flow and reduced turbulence.
- Durability is a key point with a hydraulically driven product pump. The product pump is located at the reload station and the gear pump is attached directly to the pressure manifold for increased output.
- A dependable, air-actuated fail-safe sump valve is located directly on the bottom of the product tank and automatically closes in the event air pressure is lost.
- The hydraulic system features its own reservoir and an independent oil cooler equipped with a fan and temperature gauge. Having this system separate from the chassis hydraulics keeps both systems running cleaner and more efficiently.





But all of that doesn't mean a thing without the booms and that's why TerraGator offers you a choice of spray booms on all liquid systems.

### **TERRAGATOR BOOM**

Fixed-height TerraGator booms feature a unique design that allows full boom breakaway in both forward and reverse directions, as well as five-foot tip breakaway. The clean design also features dual hydraulic cylinders, in place of springs, for better boom control, whether you're in the field or folding the booms for transport.

### **BENSON BOOMS II™**

When boom height adjustment is important, you can't beat the versatility of the Benson Boom II system. This deep-drop boom offers spray heights from 21 to 75 inches, thanks to its center-pivot boom tree design.

Meanwhile, separate boom leveling cylinders allow the system to maintain a stable, level platform independent of vehicle movements. This makes it ideal for accurate applications on hillsides and rough, uneven terrain. With in-cab controls, the operator can even override the system and tilt the boom tree when necessary to match boom height to the terrain.

Both booms are available in either a straight 80-foot configuration or a versatile 60/80-foot width with a choice of hose or stainless steel boom plumbing and 30- or 60-inch nozzle spacing for precision application.



# DRY SYSTEMS

When it comes to high capacity from a spinner unit, you can't beat the output and volume capacity of the **New Leader L4000G4** spinner boxes. Thanks to their wide, tapered sides, the rugged hoppers not only fill quickly, but also hold large capacity for longer runs between refills. Available in either 304 stainless steel or painted 409 stainless steel, the New Leader L4000G4 offers modular hydraulic packages to suit your spreading needs. With capacities up to 331 cu.ft., coupled with the optional MultApplier insert, accurate variable rate application of two products in one pass is possible, while the patented G4 spinners deliver spread widths up to 90 feet depending on the type of material applied.

The **Air Spreader** system features an open, free-flowing design and boasts a unique distributor head engineered to provide more consistent application. This system facilitates complex multi-product applications where accuracy is a must, with double-overlap coverage. Near-vertical hoses minimize clogging and allow for easy servicing and cleanout of individual boom tubes to deliver maximum efficiency. The self-leveling 70' booms feature 5' breakaway tips for added durability.

**SOILECTION Twin Bin**® system offers individually variable rates in both bins for dispensing products at rates from 1 to 20 cu.ft. per minute. The horizontal charge auger and double-flighted vertical auger accurately blend crop nutrients. The two-compartment box has a 290 cu.ft. struck capacity and features a 4" box extension and four splashguards. Bin level sensors and hydraulically controlled metering chains ensure a true variable rate application, particularly with each bin controlled independently.

By adding an optional, dual 25 cu.ft. granular bin to either the Air Spreader or Twin Bin systems, its possible to administer true variable rate applications of several products in one field pass.

A **Co-Application Liquid System** option consists of two stainless steel 200-gallon tanks mounted to the chassis between the rear tires, fuel tank and the air cabinet. Product is driven hydraulically by an Ace centrifugal pump and has an application range of 10-60 gallons per minute.







**AirMax Precision™** is a single bin dry system with impressive 70' booms to assure uniform application patterns with triple overlap coverage at a rate of up to 1,200 lbs. per acre.\* Material is delivered evenly across any terrain since the booms float over washouts, terraces, rough ground and side hills. Our 3.25" stainless steel product tubes are almost 20% wider in diameter than the competition to allow for higher product capacity. The booms are kept at the proper height by an independent boom suspension for a more uniform spread pattern.

**AirMax Precision 2™** spreads up to two products at once with customizable co-application rates. Product travels only a few feet to the ground thanks to the air delivery system capable of accurate product placement even in windy conditions. For greater flexibility, this system allows 50/50 or 60/40 configuration in the adjustable split main bin for precision product applications.

For added versatility with either the AirMax Precision or AirMax Precision 2, add the optional 40-cubic-foot granular bin for application of up to three dry products. Mounted on the back of the main box, it provides accurate applications of micronutrients without reducing main bin capacity.

Or add the **Spray-Max 475** co-application liquid system. The removable 475-gallon stainless steel tank adds liquid products to the offerings at rates of 7.5 to 70 gallons per minute.

*\* Based on 65 lb. density material applied at a rate of 10 mph*

# TECHNOLOGY SOLUTIONS

Adding Raven products to your TerraGator brings an unequaled brand of precision agriculture innovation and performance to your operation.

Raven Industries and AGCO Application Equipment have been leading the way together for almost 20 years. Whether you need a simple-to-use application control system or a fully integrated field computer with internet access and assisted steering, we have a solution that fits your operation.

It's all about improving your position. Pinpointing exactly where you are in the field. Applying best management practices to grow more with less.

**RAVEN**

*Simply improving your position.<sup>SM</sup>*



## RAVEN™ SCS 5000



Regardless of vehicle speed or gear selection, the Raven™ SCS 5000 provides precision control and professional performance. Simple programming and a digital boom pressure read out give you real-time information on up to 5 different products. Individual boom section controls and a manual override control provide the ability for spot application when needed.

## VIPER PRO™

The Viper Pro multi-function field computer is the best in its field, with extra power and capability to drive even the most advanced system functions with ease. For professional operators and large growers looking for the ultimate in productivity and performance, Viper Pro is built to deliver.

Faster processing times and more program memory for handling extra field data, five-product VRA and multiple system functions with power to spare, including AccuBoom™ automatic boom section control to ensure no costly skips or overlaps. Viper Pro's extra large 10.4" diagonal touch-screen display with vertical orientation also lets you see more and do more with enhanced, stress-free operation.



## SMARTRAX™



Every field has its boundaries. But with SmarTrax assisted steering, you get to set the limits—like faster operating speeds, best-in-class line acquisition, and easier, more relaxed driving. When you're ready to get more out of your guidance system, SmarTrax is carefully designed and engineered to give you convenience, reliability and performance. Across-the-board GPS compatibility, optional 3-D terrain compensation, automatic system calibration and unique yaw sensor design make all the difference in the world when your season is on the line.



## FALCON VT (BY AGCO)



The Falcon VT is the newest addition to the legendary Falcon application control family. It carries on the Falcon heritage of accurate and dependable control while remaining simple to operate. It's also the only controller that AGCO offers that is capable of variable rate applications of up to seven products at the same time.

All information – from application rates to coverage maps – is displayed on a large, 10.4"

easy-to-read touch screen. Prescription maps and as-applied reports are easily transferred between the Falcon VT and a computer using SD memory cards.

## AGCOMMAND (BY AGCO)

Managing a fleet of equipment and controlling operating costs is a critical area for any successful business. With the new AGCOMMAND system, you have detailed monitoring capability to establish exactly where every machine is located at any given moment, how well they are performing and how efficiently the operators are working.

AGCOMMAND is available as a factory option on all 2011 TerraGators and RoGators. Field installation kits are available for 2010 and 2011 models. A universal kit is offered as a way to add AGCOMMAND to other vehicles, such as tender trucks and service vehicles. Maintain contact with your equipment and operators with AGCOMMAND.



Ag professionals all around the world depend on AGCO Advanced Technology Solutions to maximize profitability of their crop production operation in three key areas.

### MACHINE CONTROL

Controlling all the aspects of your machinery effectively – and, increasingly, automatically – is now essential for efficient, productive operation, and for maintaining your competitive edge.

### FLEET MANAGEMENT

To get the maximum return on your equipment investment, you need to be able to plan and monitor their operation in order to keep running costs and maintenance to a minimum.

### PRECISION FARMING

The greater the precision, the bigger the profit – it's as simple as that! These tools gather extremely useful and accurate data, allowing quick and clear analysis to enable informed management decisions to be made.

While many of these products may be highly sophisticated in terms of what they can achieve for your business, they are very straightforward and easy to use. Ask your dealer to explain the many benefits of these systems to you first hand.

# AGCOMMAND™



ENGINE	6303	8303
Make	AGCO SISU Power	AGCO SISU Power
Type	8.4 Citius CTA EPA Tier III	8.4 Citius CTA EPA Tier III
Number of Cylinders	6	6
Horsepower	300 HP (223.7 kW) @ 2200 rpm	330 HP (246.1 kW) @ 2200 rpm
Peak Horsepower	325 HP (242.4 kW) @ 2000 rpm	355 HP (264.7 kW) @ 2000 rpm
Torque	1,030 ft-lbs (1396.5 N-m) @ 1500 rpm	1,100 ft-lbs (1491.4 N-m) @ 1500 rpm
TRANSMISSION	AGCO ML-260 Continuously Variable Transmission	
Type	AGCO ML-260 Continuously Variable Transmission	
Forward Speed (high/low)	41 mph / 23 mph (67 kmh / 37 kmh)	
Reverse Speed (high/low)	21 mph / 20 mph (34 kmh / 32 kmh)	
AXLES	3.75 in. (9.5 cm) diameter Freewheeling cold-rolled solid steel	
Front	Axle Tech PRC-673 wide track 42,000-lb. rating with flotation tires	
Rear		

SUSPENSION	Rigid rear axle to frame mount	
Type		
STEERING	Dynamic Load Sense	
Type		
TIRES	Goodyear Radial 1000/50R25	
Standard	Goodyear Radial 1000/50R25	
Optional	Michelin Radial 1000/50R25 Firestone DT 66 x 43 - 25	
FLUID CAPACITIES	165-gallon (625 L) total	
Fuel		



#### APPLICATION CAB

Glass Area / Floor Area	60 sq. ft. (5.5 sq. m) / 14 sq. ft. (1.3 sq. m)
Cab Suspension	Air Ride Cab (optional)
Radio	AM/FM/stereo/CD-MP3-compatible/weather band
HVAC / Filtration	Automatic Temperature Control / Three-Level Activated Carbon
Steering Wheel	14"
Standard Seat	Semi-Active Seat Suspension with Heated Seat Cushions
Optional Seat	Air Ride Seat Suspension

#### AIR SYSTEM

Compressor	Engine Mounted
Governor	120 psi (8.2 bar)
CFM	14.1 cfm (6.7 L/s)
Reservoir	Dual

#### WEIGHTS

Rated Capacity Front	14,000 lbs. (5,670 kg)
Rated Capacity Rear	42,000 lbs. (19,050 kg)
Approximate Front Weight	9,338 lbs. (4,236 kg)
Approximate Rear Weight	10,758 lbs. (4,880 kg)

#### SYSTEMS/CONTROLLERS 6303

Systems Available	1,800-Gallon Liquid (TerraGator Boom or Benson Boom II) New Leader L4000 Spinner
-------------------	---

Controllers Available	Falcon VT, Raven 5000, Raven Viper Pro
-----------------------	---

#### 8303

1,800-Gallon Liquid (TerraGator Boom or Benson Boom II) New Leader L4000 Spinner, AirMax Precision, AirMax Precision <sup>2</sup> , Air Spreader, Twin Bin Falcon VT, Raven 5000, Raven Viper Pro
--





AGCO, Your Agriculture Company, is a premier manufacturer of agricultural equipment, providing high-tech solutions for professional farmers feeding the world. The company is dedicated to delivering superior customer service, innovation and quality. AGCO products are distributed in more than 140 countries worldwide.

#### **AGCO FINANCE**

At AGCO Finance, we understand that financing is as much a part of your purchase decision as the features and benefits of the product. So we're committed to providing the best means of acquiring the equipment you need, while allowing you to preserve other credit lines of operating capital.

#### **AGCO ANSWERS**

At AGCO, customer care isn't just a department. It's a commitment. Contact us with your questions. We'll do our best to answer them promptly or put you in touch with someone who can.

**877-525-4384** or [agcoanswers@agcocorp.com](mailto:agcoanswers@agcocorp.com)

#### **AGCO PARTS**

AGCO Parts supports the dealers with world-class or industry-leading service and provides tools like [sprayparts.com](http://sprayparts.com) for their customers to have parts information at their finger tips 24/7.



**TerraGator**<sup>®</sup>  
See more at [applylikeapro.com](http://applylikeapro.com)



TerraGator<sup>®</sup> is a worldwide brand of AGCO Corporation.

© 2010 AGCO Corporation. AGCO<sup>®</sup> and TerraGator<sup>®</sup> are registered trademarks of AGCO Corporation. AGCO Corporation has a corporate policy of continuous product improvement and development; therefore, specifications are subject to change without any advance notice. AGCO Corporation is not responsible for differences between the specifications or illustrations contained in this publication and the actual equipment. Equipment produced by other manufacturers is shown in photographs in this brochure for the purpose of illustration only and is not intended as an endorsement of that particular equipment or its suitability. All rights reserved.  
AGCO Corporation, 4205 River Green Parkway, Duluth, GA 30096 | TG10B001DS (05) XX XXX