

RoGator Super Sprayer Series

SS874 • SS1074 • SSC1074



TO CONTACT YOUR LOCAL SALES REPRESENTATIVE, CALL

1-877-4AG-CHEM

www.rogator.agcocorp.com

Designed and Engineered for **DEMANDING CONDITIONS**

For more than 40 years, Ag-Chem equipment has been designed to fit the demands of custom applicators and innovative growers. Each RoGator is exclusively designed from the ground up to do one job and to do it better than any other applicator in the industry.



New RoGator Super Sprayers are the top choice of agricultural professionals everywhere

The new RoGator Super Sprayer Series is versatile enough to handle pre- and post-emerge applications:

- Chemicals are discharged from the rear, away from the front-mounted engine to maximize performance and minimize engine maintenance.
- The SS874 and SS1074's boom racking design provides a clear view of traffic for optimal on-road travel.



Narrow profile racking design



Exclusive C-channel frame

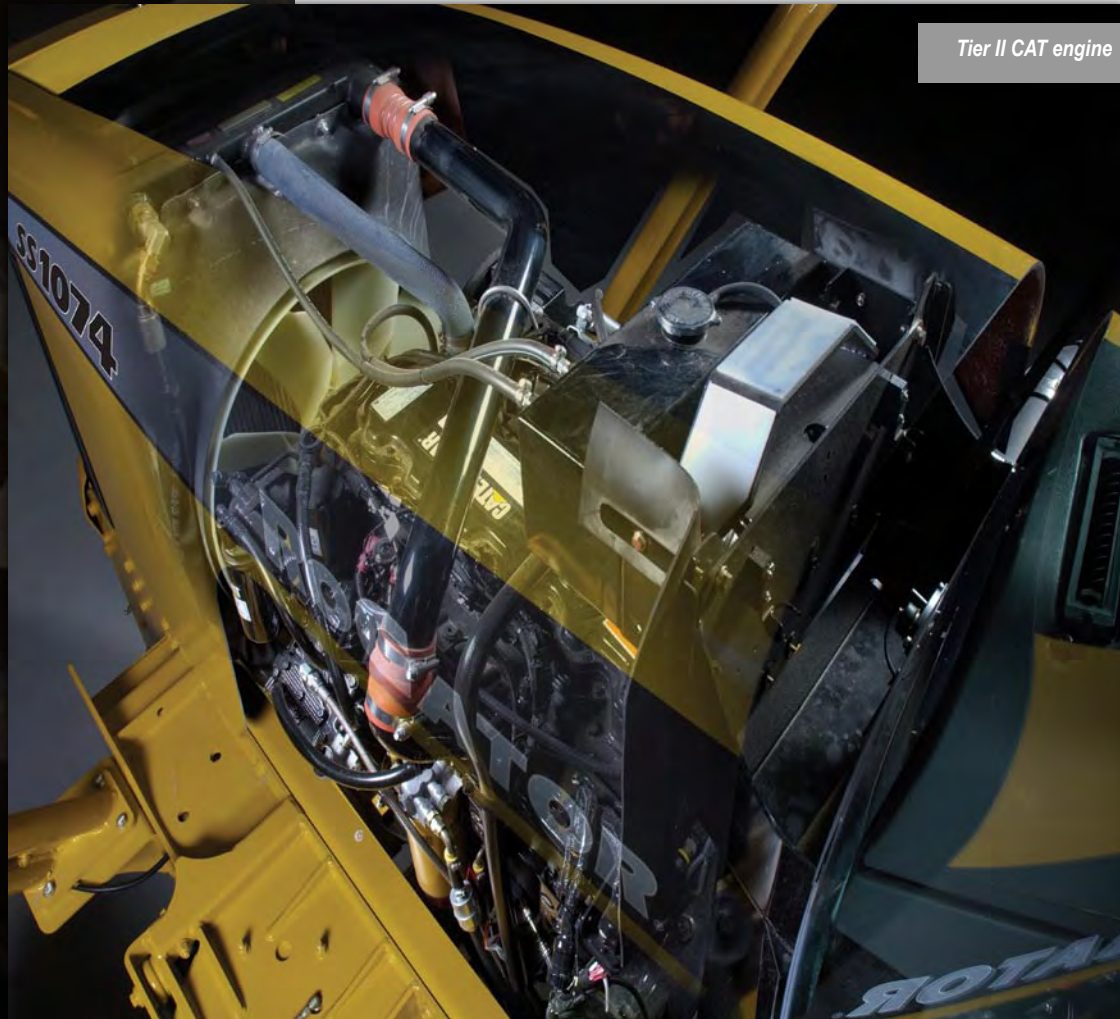
- An integral side-by-side cooling system reduces debris build-up between coolers and allows simultaneous air flow through the radiator, charge-air cooler, oil cooler and A/C condenser.
- RoGator's wheel-leg stance offers a narrow, tucked-in profile.
- Exclusive C-channel frame absorbs shocks and flexes with field conditions.



RUGGED

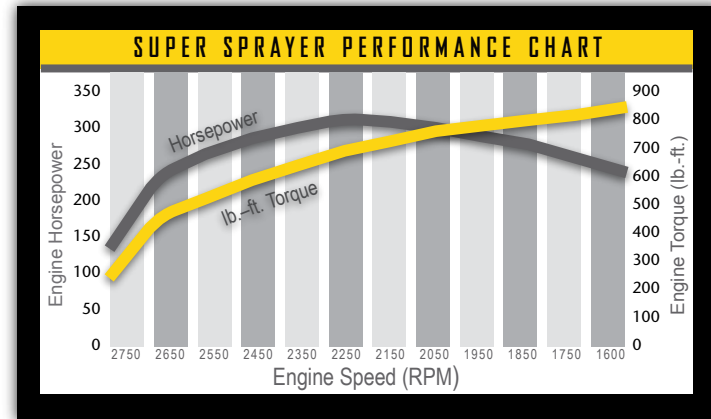
Power to Meet THE CHALLENGE

Weeds, insects and crop disease don't wait for dry fields, often thriving when field conditions are at their worst. That's why the RoGator Super Sprayer Series is powered by Tier II Caterpillar® engines. These powerful, highly reliable engines have what it takes to get the job done in the best and worst of field and weather conditions.



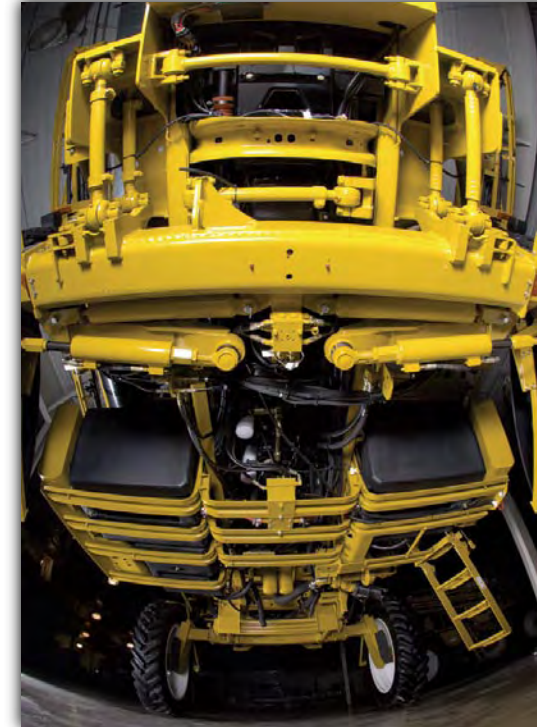
Tier II CAT engine

| SUPER SPRAYER SERIES | |
|----------------------|-------------------------|
| Engine | Tier II CAT 3126B |
| Displacement | 7.2 liter (439 cu. in.) |
| Horsepower | 275 hp (204 kW) |
| Power Bulge | 299 hp (223 kW) |



EXCLUSIVE C-CHANNEL FRAME

Modified carbon steel beams absorb shocks and flex to handle rough terrain.



UNOBSTRUCTED UNDERCARRIAGE

The RoGator Super Sprayer undercarriage is tucked up, which minimizes crop damage and makes it easier to move over undulating terrains.



MAXIMUM POWER TO THE GROUND

RoGator Super Sprayers feature radial-piston, direct-drive motors that provide 4-wheel drive in all four gears.



60-GALLON HYDRAULIC RESERVOIR

A high-capacity, 60-gallon (228 L) hydraulic reservoir keeps fluid cooler and delivers enough capacity to handle auxiliary hydraulics.

| SUPER SPRAYER MAX SPEEDS | |
|--------------------------|-----------------|
| Low 1 | 12 mph (18 kph) |
| Low 2 | 15 mph (22 kph) |
| Medium | 19 mph (30 kph) |
| High | 32 mph (52 kph) |

SAUER-DANFOSS HYDRAULIC PUMPS MAXIMIZE POWER AND TORQUE

These RoGators are equipped with Sauer-Danfoss hydraulic pumps and higher torque motors on all four wheels. Tandem 90 Series hydraulic pumps provide precise pressure control and higher flow rates that reduce unwanted pressure spikes.



POWERFUL

Comfort that Lasts AS LONG AS THE WORKDAY

Not only are these sprayers tough enough to work all day, every day, they're built to provide a working environment that will sustain the operator from sunup to sundown with an ergonomically designed interior that's roomy, comfortable and quiet.

PANORAMIC VIEWS

- The cab is enclosed in 55 square feet (5.1 sq. m) of glass with 360-degree visibility and a clear view of the crop, tires and boom.
- Exhaust and intake pipes are aligned with cab pillars.
- Front corner windows are low, and the low-profile hood provides increased visibility.



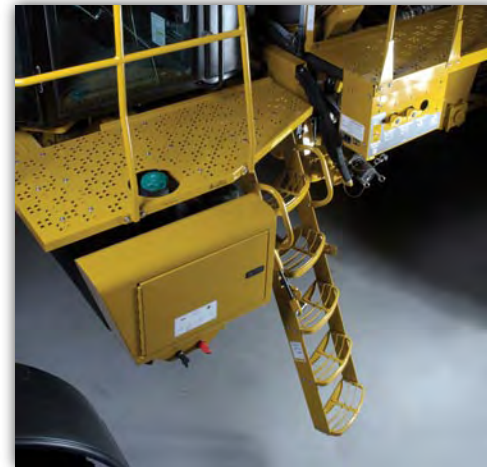
Narrow racking booms provide the best roading views in the industry



Increased visibility provides unobstructed view from boom tip to boom tip

EASY ENTRY

- Each machine has a ladder and a flat deck entrance with a skid-proof surface and guardrails.
- The ladder automatically retracts when the parking brake is released and extends when the brake is applied.



NIGHT LIGHTING

- Up to 6 halogen work lights with two maintenance-free batteries and a 160-amp or optional 200-amp alternator are available.
- Optional HID lighting provides even more night time lighting capability.



The Super Sprayer's roomy, luxurious cab features industry-leading air-ride suspension to minimize operator fatigue



Revolutionary semi-active seat adjusts to the operator and changing field conditions



Throttle and hydrostatic control handle

STATE-OF-THE-ART CAB

- The Super Sprayer Series cab features industry-leading optional air-ride suspension.
- Choose from the standard air-suspended seat with fore/aft isolators and reclining lumbar adjustment or the REVOLUTIONARY semi-active seat suspension. This optional state-of-the-art suspension integrates air with fluid to produce the best, smoothest ride in the industry.
- A three-point cab mounting with rubber isolators minimizes noise and vibration.
- Sound-suppressing insulation deadens noise from the engine and equipment.
- The cab has automatic temperature control, and has three filters to filter out dust and chemicals, including a separate pressurization fan for a charcoal-type filter.
- Other features include three-way dome lighting, auxiliary radio mount, in-cab storage, triple auxiliary power outlets for cell phones and electronics, and easy-to-read spray system gauges.

CONTROL AT YOUR FINGERTIPS

- All system functions, including the throttle and hydrostatic control, are in the right-hand console adjacent to the operator's seat.
- The hydrostatic control handle puts the most frequently used controls at your fingertips, including the master apply switch, gear selection, boom wing up/down, foam marker and individual boom control.

COMFORT

Accurate **EFFICIENT** Dependable



POLY OR STAINLESS STEEL TANKS

RoGator SS874 comes with your choice of a poly or stainless steel, 800-gallon (3028 L) tank. The SS1074 offers a 1,000-plus-gallon (3785 L) stainless steel tank that's durable and easy to clean. A 110-gallon (416 L), top-mounted rinse tank with a full-length rinse bar flushes the main chemical tank in minutes.



Wide track stance



Narrow, tucked-in stance

THE SPRAYER

- The RoGator's product delivery system comes standard with a Hypro 9306 pump and PWM valve.
- System delivers rates as low as 10 gpm (37.85 L) to as high as 136 gpm (514.8 L) at 67 psi (4.6 bar) through standard plumbing.
- Optional high-volume plumbing increases rates to a low of 20 gpm (75.7 L) and a high of 192 gpm (726.8 L).
- A manual override allows the operator to continue spraying in case of an electrical problem or controller malfunction.

BOOM BREAKAWAY FEATURE

RoGator SS874 and SS1074 models have a full- and tip-breakaway feature that protects against damage to the booms from fence posts, gates and undetected obstacles.



Boom breakaway feature

BEST BOOMS IN THE BUSINESS

- Each of five boom sections can be individually turned on or off when spraying.
- A 1-inch (25.4 mm), electric ball-valve section control seals tight when the booms are deactivated.
- The GPM Plus option uses air bladder-style shutoffs to each nozzle.
- Center-pivot, self-leveling mounting maintains booms at the proper height, even in changing terrain.
- Three nozzle spacings, both on-center and off-center.
- Booms fold to fit field dimensions.
- Optional end-row nozzles provide coverage near fences.



Take Crop Care
TO A HIGHER LEVEL



TRACK WIDTH

- Track width adjusts from 120 inches (3048 mm) to 152 inches (3861 mm) to match any crop row or bed width.
- 48-inch (121.9 cm) ground clearance minimizes crop damage.
- 31- to 83-inch (78.74–210.82 cm) boom height adjustment for varying terrains.

BIG-CAPACITY FUEL TANKS

RoGators have two large-capacity, 65-gallon (492 L) fuel tanks that can be filled from either side of the sprayer.



New Leader dry boxes

NEW LEADER DRY BOXES

- The RoGator SSC1074 model can be equipped with New Leader dry boxes for spreading lime or dry fertilizer.
- New Leader dry boxes are easily switched from liquid tanks, requiring only about a half-day to change systems from liquid to dry.
- Two conveyor options handle a wide range of products, including heavy materials like lime.
- Dual 24-inch (609.6 mm) spinners provide the power and volume needed for high-rate applications.
- A 30-inch-wide (762 mm) conveyor belt moves material smoothly.
- Optional stainless steel belly pan, roll tarp, foam marker and spinner speed monitor are available.

| | BOOM WIDTHS |
|--|--|
| RoGator SS874 and SS1074 Super Sprayers | 60/80 ft. (18/24 m) with 13-ft. (3.9 m) tip and full breakaway |
| | 90 ft. (27 m) with 15-ft. (4.6 m) tip and full breakaway |
| | 100 ft. (30.5 m) with 20-ft. (6.1 m) tip and full breakaway |
| | 120 ft. (36.6 m) with 14-ft. (4.3 m) tip and 27-ft. (8.2 m) full breakaway |

| NEW LEADER DRY BOXES | 3020G4 | 2020G4 |
|----------------------|-------------------------|-------------------------|
| Capacity | 201 cu. ft. (5.7 cu. m) | 201 cu. ft. (5.7 cu. m) |
| Height | 55 in. (1397 mm) | 54 in. (1372 mm) |
| Length across top | 132 in. (3353 mm) | 144 in. (3658 mm) |
| Width across top | 102 in. (2591 mm) | 96 in. (2438 mm) |
| Overall length | 160 in. (4064 mm) | 172 in. (4369 mm) |

PEAK PERFORMANCE

Options Enhance PERFORMANCE



It's hard to improve upon the performance of RoGator sprayers. These options offer additional technology or performance upgrades for more versatility.

NEW FALCON VT CONTROL SYSTEM*

- Operate flat or variable rate applications
- Low rate liquid applications at 2 gallons (7.6 L) per acre
- Track work with multiple product and acre/hectare totals
- Create and place geo-referenced markers
- Track operation data through customizable tasks
- Secure Digital (SD) media data transfer
- Touch-screen and push-button controls



RAVEN SCS 4000

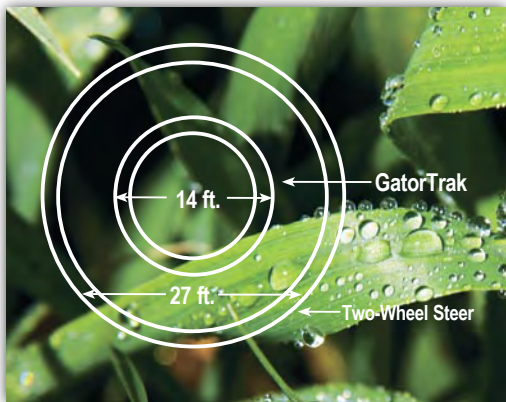
- Economical, easy to operate
- Controls up to three products via CANbus technology
- View status of application rate, vehicle speed, system pressure or fan rpm, and boom status



AUTOGUIDE GPS STEERING SYSTEM

Three levels of accuracy:

- Sub-meter: +/- 10-inch (25.4 cm) dynamic accuracy
- Decimeter: +/- 2- to 4-inch (5-10.16 cm) dynamic accuracy
- Centimeter: +/- 1-inch (2.54 cm) dynamic accuracy



GATORTRAK 4-WHEEL STEER

- Computer-controlled 4-wheel steering
- Cuts turning radius by 40% to 50% from 27 feet (8.2 m) to 14 feet (4.2 m)
- Leaves two tire tracks instead of four.
- Reduces soil disturbance
- Pushbutton "crab steering" feature shifts wheelbase on uneven terrain and side slopes

RAVEN VIPER

- Touch-screen system
- Make straight-rate applications or variably apply single or multiple inputs
- Uses maps from FarmWorks, SST, SGIS and software mapping packages
- Input trouble spots in the field
- Create application maps which can be downloaded to a PC and printed without other mapping software



FALCON II

- Manages single or multiple subjects and records as applied information for later analysis
- Simultaneous multi-product applications
- Multi-function keyboard can be positioned in the cab



| MODEL | SS874 ■ SS1074 ■ SSC1074 | ADDITIONAL OPTIONS |
|--------------------|--|-----------------------------|
| ENGINE | Cat® 3126B 7.2L (439 cu. in.) turbocharged, full electronic control 275 SAE hp (204 kW) at 2500 rpm Power bulge to 299 SAE hp (223 kW) at 2200 rpm Peak torque of 830 lb.-ft. (1125 n-m) @1500 rpm Wastegated turbocharger with exhaust brake Charge air-cooled Certified Tier II EPA off-road, Stage II emissions | 3-inch Flow Meter |
| DRIVE | Hydrostatic tandem Sauer/Danfoss 90-Series pumps 6.1-cu. in. (9.9 cu. m) per revolution per pump Full-time 4-wheel drive | HID Lighting |
| SUSPENSION | Air springs with fore/aft torque rod and lateral link at each axle location Rear suspension with an integral anti-roll system Air spring with shock absorber Front and rear automatic ride height-leveling valves | VariTarget Nozzles |
| SPEED | Maximum with standard 380/90R46 tires High: 32 mph (52 kph) Low 2: 15 mph (24 kph) Medium: 19 mph (30 kph) Low 1: 12 mph (19 kph) | Pressure Washer Kits |
| FRAME | Modified carbon steel, 3 in. x 9 in. (7.62 cm x 22.68 cm), "C" section Bolted design, flex-frame Heavy duty open-section cross members | Foam Marker |
| AIR SYSTEM | Engine-mounted, direct-driven 13.2-cfm (6.2 L/s) compressor, governed at 120 psi (8.3 bar) to provide air for accessories Dual reservoirs and low pressure alarm Air dryer standard with GPM-Plus and boom cleanout options | Semi-Active Seat Suspension |
| CAB | Full visibility 6-post sprayer cab Three-point rubber isolation mounted Three-level environmental filtration Full-view door with tempered side and rear glass Optional Air Ride cab Pressurized ventilation | 3-inch Reload |
| CHASSIS DIMENSIONS | Wheel base: 184 in. (4.67 m) Track width: 120-152 in. (3.0-3.91 m) Overall chassis length: 290 in. (7.37 m) Height to top of cab: 151 in. (3.84 m) Crop clearance: 48 in. (1.22 m) | |
| CHASSIS WEIGHT | 27,640 lbs. (12,537 kg) | |

OPTIONS/SPECS

* Availability late fall 2006



Ag-Chem is a product of AGCO Corporation. Some features listed or shown may be optional. Due to continuous product improvement, AGCO reserves the right to make specification changes without advance notice. All ®s and ™s are the property of AGCO and/or their respective owners.



AGCO Corporation
4205 River Green Parkway
Duluth, GA 30096

www.agcocorp.com

AC06509 (08) 5

Customer Commitment

THE RIGHT CHEMISTRY

Dedicated to Your Needs

When you do business with an Ag-Chem area sales manager, you have a direct voice with the company. Ag-Chem's dedicated sales force is unique in the industry, in that all sales managers are employees of the company, dealing directly with our customers. The benefits to you include a more knowledgeable sales staff and a company that's more responsive to your needs.

And in Jackson, Minn., our team — from manufacturing to distribution — forms the right chemistry to provide you with the best application equipment in the industry.

With Ag-Chem, application is all we know, all we do and all we are.

Competitive Financing

We understand that an Ag-Chem machine represents a serious investment. Working through AGCO Finance, we

offer flexible payment schedules, flexible terms, competitive rates and comprehensive financing. All are available through one source — your Ag-Chem area sales manager.

Parts and Service for Your Machine

Ag-Chem has parts and service mapped out — literally. Throughout North America, our dedicated parts & service dealer network is ready and available with strategically located facilities to expedite your parts order as efficiently as possible. Add to that several trained service technicians and utility vehicles that are on-call to handle maintenance and repairs. Not to mention the best warranty in the business.

Faster service. Better parts availability. More efficiency. The right chemistry for the best support.



 **RoGator**[®]
ag-chem[®] the right chemistry