

**You're independent.  
An individual with a lifestyle  
all your own. You know where  
you're going and how to get  
there. You demand a truck  
that sets you apart and  
keeps you ahead.**

**Built tough  
with good clean  
lines and plenty  
of power under  
the hood.**





**MACK**

**built it...**

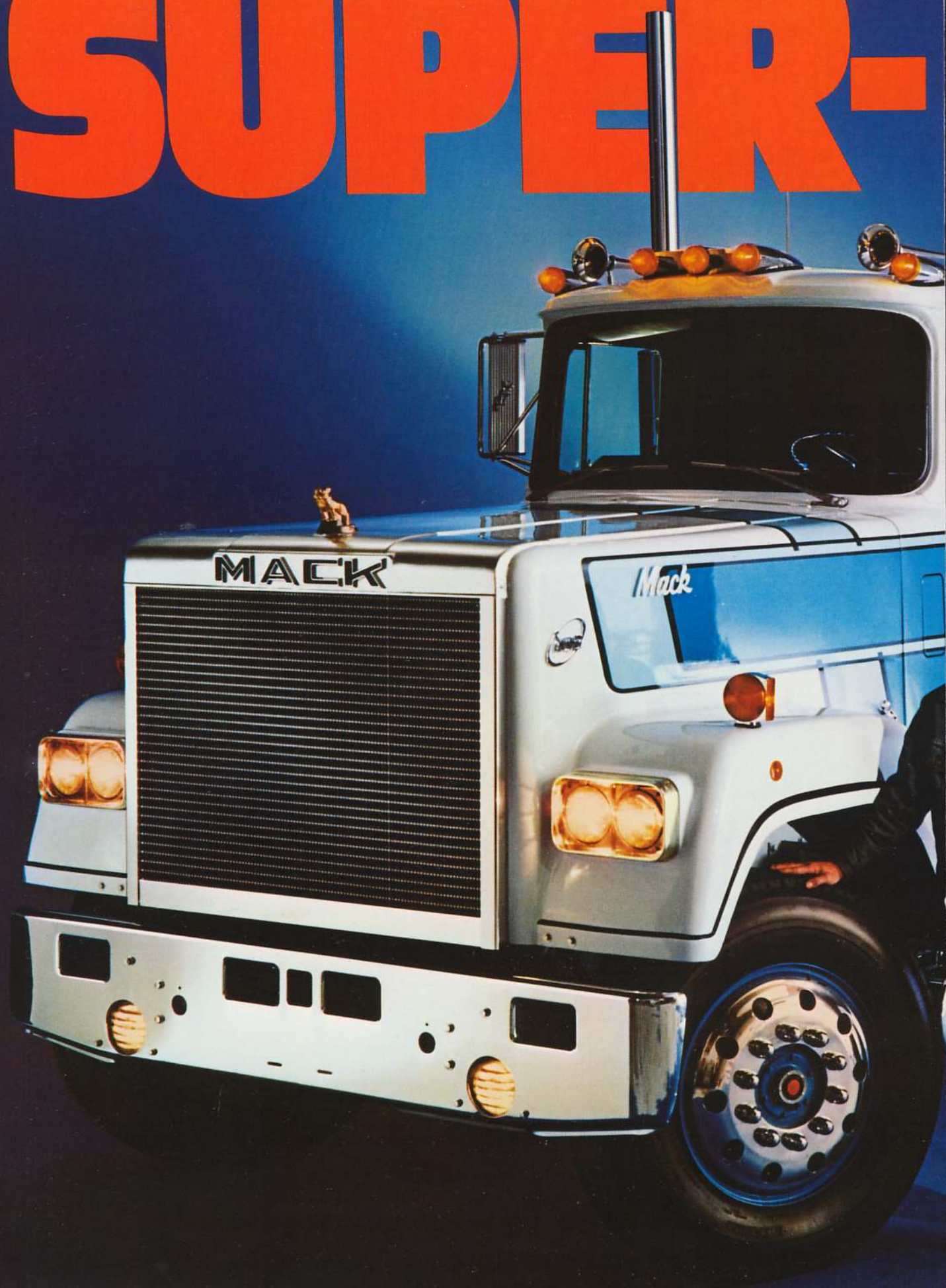
**to**

**YOUR**

**standards**



# SUPER-





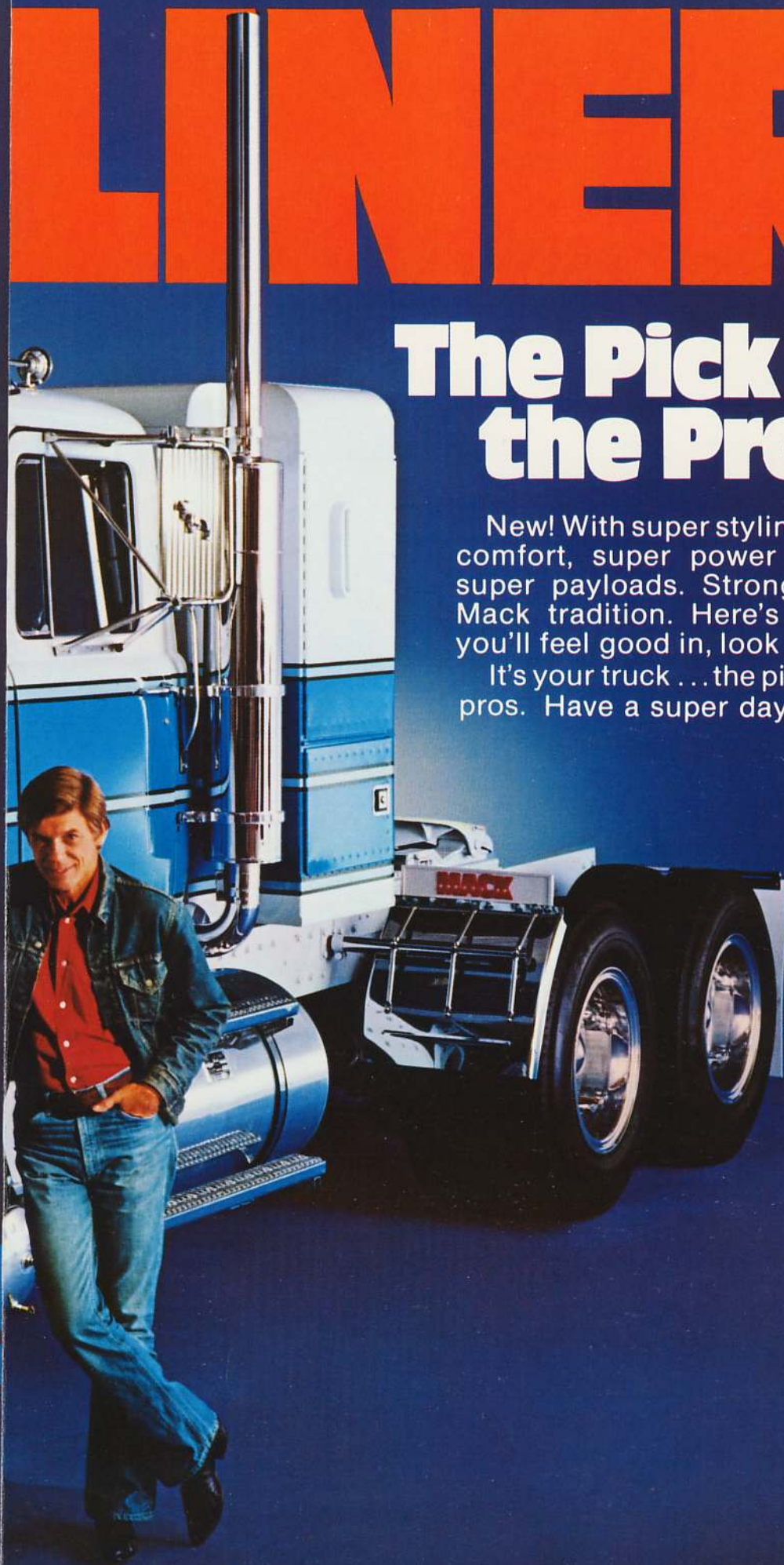
# LINER

T.M.

## The Pick of the Pros.

New! With super styling, super comfort, super power to haul super payloads. Strong in the Mack tradition. Here's a truck you'll feel good in, look good in.

It's your truck ... the pick of the pros. Have a super day!









# The New Mack

# SUPER-LINER

puts it all together



## Super styling

Lines of power and beauty, many options in polished aluminum or gleaming chrome. Striping in virtually unlimited color combinations. Inside, luxurious trim in any of three combinations, in any of five colors.



## Super comfort

For the pro, the luxury of door-to-door diamond-tufted vinyl. The cab is double-wall, lightweight steel for safety, and with superior protection against heat, cold, noise, vibration, corrosion. Adjustable seat and steering make it every man's cab.



## Super power

Mack's drop-down frame accommodates the largest engine and a large frontal area radiator to keep it cool. Spring-loaded, integral fiberglass hood and fender unit for easy maintenance.




## Super performance

Every heavy-duty pound of Super-Liner pulls its weight. All put together with a Mack toughness that lasts. Controls and instruments are easy to scan, reach. In every way, you're in command. You'll feel super in a Super-Liner. Make a Mack your world on wheels!



**MACK**  
**TRUCKS**

© 1978 Mack Trucks, Inc.

one of The Signal Companies 

The information in this brochure was accurate as of the date of publication. Mack Trucks, Inc., reserves the right to make changes in specifications, equipment or design, or to discontinue models or options without notice at any time.







# MACK<sup>®</sup>

## Super-Liner<sup>®</sup>





# **MACK<sup>®</sup>**

## **Super-Liner<sup>®</sup>**

### **Model RWL-736 LST**

**Mack EM9-400R** (400hp) Engine  
w/Mack Dynatard Engine Brake

**Mack TRTXL 1070** (12-speed) Maxitorque Transmission

**Mack FAW5371C** (12,000#) Front Axle; Cam Brakes  
Mack Taperleaf Spring Suspension  
11R24.5 (14pr) Pirelli SN55 Radial Tires

**Mack SS38C** (38,000#) Bogie; Cam Brakes; 4.17 Ratio  
Mack Camel-Back Spring Suspension  
11R24.5 (14pr) Pirelli SN55 Radial Tires

**Mack CA 494;** Deluxe Interior

194" Wheelbase; 152" Load Platform  
10-1/2" x 3-1/2" x 1/2" Aluminum Frame Rails  
(7/8" Flanges)

## **Chassis Equipment**

Bullet Marker Lights  
Integral Air Conditioner  
Brakcoil and Coil Amp Coiled Trailer  
Hoses and Cord  
Silicone Radiator & Heater Hoses  
Bostrom Levelair II Driver's and  
Passenger's Seats  
Seat Belt Retractors  
AM-FM 8-Track Stereo Radio  
Temperature Gauges for Engine,  
Transmission and Rear Axles  
Vortex Air Restriction Gauge  
Kysor Engine Protection Alarm System  
Exhaust Pyrometer  
Air Application Gauge  
Manifold Pressure Gauge  
Fuel Pressure Gauge

Tinted Glass in Doors & Rear Windows  
Dual Exhaust with Polished Aluminum  
Heat Shields  
Load Lights, Mounted Back of Cab  
Perlux Driving Lights  
Dual 100-Gallon Aluminum Round Fuel  
Tanks, with Steps  
Tow Yokes  
12 Volt, 90 Amp. Alternator  
Hand Control Valve for Trailer Brakes  
Fiberglass Hood & Fenders  
Polished Aluminum Disc Wheels, Front &  
Rear  
Tractor Package  
Axle-Mounted Integral Power Steering  
Chrome and Bright Finish Accessories

## **Chassis Weights:**

Front .....	8,600
Rear .....	7,550
Total .....	16,150





# MACK SUPERLINER® "LOGGER"





# RWL767LST SUPERLINER

## Basic Logging Truck Specifications (Calif.)

	Basic	Optional
<b>Wheel Base:</b>	236" A.F. 120"	242-254" Available Steel or Aluminum
<b>Engine:</b>	NTCC-350 Cummins	NTCC400 Cummins/8V92TAC Detroit Diesel
<b>Engine Brake:</b>	Jacobs	
<b>Clutch:</b>	CL-75 Spicer-Ceramic	CL-79, 15-1/2" Spicer
<b>Transmission:</b>	RTO12513 Fuller	1262A & P1241C Spicer TRTXL-1070 12-Speed Mack
<b>Front Axle:</b>	FF9311C Rockwell 12,000	FAW5371C Mack 12,000
<b>Power Steering:</b>	Sheppard 392	HFB70 Ross
<b>Rear Axle:</b>	SQHD Rockwell	SQHP-SSHD Rockwell
		SH38C Mack w/Hendrickson Suspension
		SS38C Mack w/Spring Suspension
		D400P Eaton
<b>Suspension:</b>	RSA380 Hendrickson	RS380-RS440 Hendrickson
		Mack Springs w/anti-sway
		Mack Walking Beam
<b>Tires - Wheels:</b>	10 x 22 Steel Disc	Aluminum Disc Front - Tires Optional
<b>Tanks - Fuel:</b>	80 gal. 20" Round Alum.	40-80 gallon Dual available 20"
<b>Trailer Conn:</b>	Full to End of Frame	60-120 gallon Dual available 24"

### Options

Air Cond.  
 Air Dryer  
 \* Air Piping  
 Air Tanks  
 Batteries  
 Battery  
 \* Bumper  
 Cab

Red Dot  
 B/W - Anchorlok  
 Stratoflex 213  
 Aluminum ILO Steel  
 Gould - Delco HD  
 Disconnect Switch  
 Extended w/tow pin  
 Air Horns - Dual Grover  
 Interior - Deluxe  
 Mirrors - Heated Bulldog  
 Radio  
 Seats - Bostrom Levelaire  
 Seat - Passenger w/tool box  
 Seat - Belt Retractors  
 Steering Wheel, deluxe, leather  
 Window - Rear Sliding

#### \* Engine Protection Exhaust:

Kysor Alarm  
 Dual-Chrome  
 Rain Cap  
 Muffler Shield

#### \* Hoses:

Silicone

#### Instruments:

Air Application  
 Air Restriction  
 Clock-Kysor Digital  
 Temperature Gauges  
 Pyrometer

#### Lights:

Bullet-type

### \* Severe Service

Battery Box R. H.  
 Brakes - Raised  
 Guard - Steering  
 Pre-Cleaner

Spring Brakes 4  
 Support Fuel Line  
 Tanks - Air on Frame  
 Tanks 20" diameter

\* Severe Service Options: Single H.D. R.H. Battery Box, Raised Brake Chambers, Steering Gear Guard, Pre-Cleaner for Air Intake, 4 Spring Brakes, 20" dia. Fuel Tank. Air Tanks relocated to frame.

\* Recommended for On/Off Service.





# MACK SUPER-LINER™ RWL-766LST





## **MACK SUPER-LINER™ MODEL RWL-766LST**

Cummins NTC-400 400 hp Engine

Fuller RTO 12513 13-speed Transmission

Rockwell FF9311C 12,000# Front Axle

Taperleaf Spring Suspension

11 R 24.5 (14 PR) General Steel X Radial Tires

Rockwell SQHP 38,000# Rear Axles; 4.33 Ratio

Neway 244 Air Suspension

11 R 24.5 (14 PR) General Steel X Radial Tires

Mack "Road Lounger" 60" Sleeper Box, Mfg. by Able Body Co., Joplin, Missouri, including heater, air conditioning, digital alarm clock, stereo speaker, external steps & grab handle, deluxe diamond-tufted interior, deluxe light package (reading & luggage), 4-tone paint.

236" Wheelbase; 1/2" Aluminum Frame Rails

## **CHASSIS EQUIPMENT**

Axle-mounted Integral Power Steering

Front Towing Yokes

Dual 120-gallon Aluminum Round Fuel Tanks

12 Volt, 85 Amp. Alternator

Bostrom Levelair Driver & Passenger Seats

Red Dot Air—Air Conditioner

Perlux Driving Lights

Mud Flaps

AM-FM 8-Track Radio with Sleeper Speakers

Deluxe Cab Interior

Exhaust Pyrometer

Digital Clock

Kysor Engine Protection Alarm System

Silicone Radiator & Heater Hoses

All Hose Chassis

Holland 2500VF36 Fifth Wheel

Dual Vertical Exhaust

Pogo Stick and Coiled Trailer Hoses

Chrome and Bright Finish Accessories

