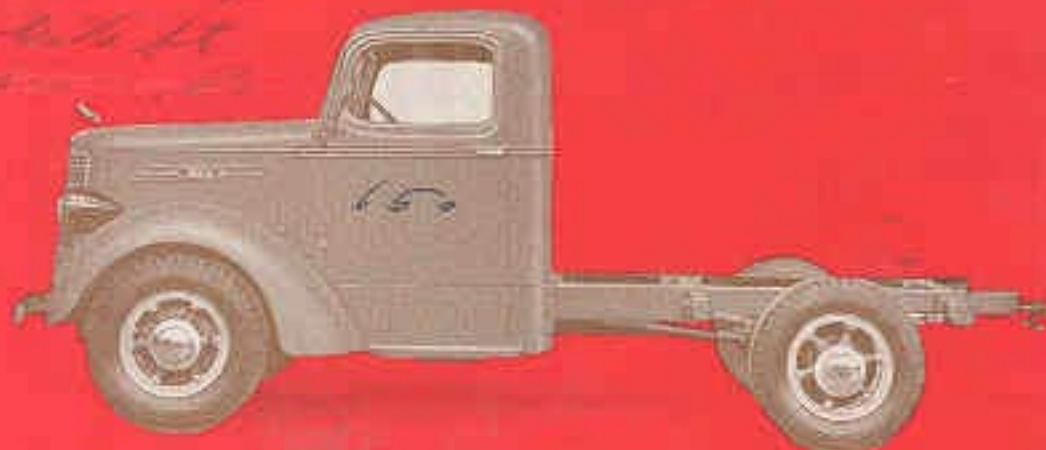


# MACK MODEL ED CHASSIS



## SPECIFICATIONS

**WHEELBASE:** Standard . . . . . 120½"  
Special (Extra) . . . . . 136½"

**TRACK:** Front . . . . . 59" Rear . . . . . 62½"

**TIRES:** Standard, Front . . . 6.00-17 Single, Balloon  
Rear . . . 6.00-17 Single, Balloon  
(Larger sizes available at extra charge)

**TURNING CIRCLE:**

6.00-17 tires . . . 46' for 120½" w.b., 48' for 136½" w.b.  
7.50-17 tires . . . 49' for 120½" w.b., 52' for 136½" w.b.

**ENGINE:** Six cylinder, 3 - 3 1/8" by 4 3/8"

Piston displacement, 210 cu. in.  
Horsepower, 67 @ 3000 r.p.m.  
Torque, 145 lb.-ft. @ 1100 r.p.m.  
Cylinders, cast in block with detachable, one-piece head

Valves, L-head at right, with exhaust valve seat inserts of alloy iron

Pistons, alloy cast iron, tin-plated

Crankshaft, four-bearing, fully counterbalanced

Connecting Rods, I-section, 30-point carbon steel

Fuel Feed, fuel pump, 20-gallon gasoline tank with outside filler

Air Cleaner, oil-watted type (oil bath type, Extra)

Vaporizer, exhaust jacketed riser with seasonal adjustment

Lubrication, full pressure

Oil Filter, Furolator (Extra)

Cooling, centrifugal pump

Thermostat, cold-circulation type

Radiator, continuous-finned, flat tubular

Water capacity, 15½ quarts

**CLUTCH:** Dry, single plate, 10" diameter

**TRANSMISSION:** Three-speed, selective, constant mesh, unit with engine

Ratios: third, direct; second, 1.83; first, 3.58; reverse, 4.25

**UNIVERSAL JOINTS:** Needle-bearing type

**REAR AXLE:** Single-reduction, full-floating  
Housing, Swaged, tubular, heat-treated steel  
Ratios, 5.571; 5.125; 6.333

**BRAKES:** Foot, four wheels, internal, hydraulic  
Size, front, 14" by 2"; rear, 15¼" by 2¼";

total area, four wheels, 236 square inches

Hand, contracting on rear of transmission

Size, 8" by 2"; area 49 square inches

Total Braking Area, 284 square inches

**FRAME:** Side members, pressed carbon steel; 7" by 2 7/8" by 3 1/8"

Cross-members, five, three box-girder type, two channel

**STEERING GEAR:** Cam and lever; ratio 15:1 to 17:1

**SPRINGS:** Front, 38" by 2"; Rear, progressive, 48" by 2¼"

Helper, 34¼" by 2¼" (Extra)

Suspension, Mack rubber Shock Insulators

**WHEELS:** Open spider type iron castings, with six spokes

**STANDARD EQUIPMENT:** Painting: a lead enamel; cowl (no seal); front fenders with running boards (no skirting); 6.00-17, 6-ply single Balloon tires, spare rim; front bumper; speedometer, oil gage, fuel gage, temperature indicator and ammeter on instrument board; tool kit; battery ignition, electric starting and lighting system; headlamps (beam indicator light on instrument board); combination stop and tail light; electric horn.

**DELUXE EQUIPMENT:** Chromium-plated hub caps; front bumper and grille; oil filter; air cleaner.

**STANDARD CHASSIS EXTRAS:** Coupe-type cab with automatic windshield wiper; chrome-plated rear view exterior mirror, non-shatterable glass, dome light, ash tray, cigar lighter, door arrester, floor mat and coat hook; four-speed transmission; shock absorbers; rear fenders; helper springs; governor; fire carrier. Tires, 6.50-17S; 7.00-17S; 7.50-17S; 8.00-17D; 8.50-17D.

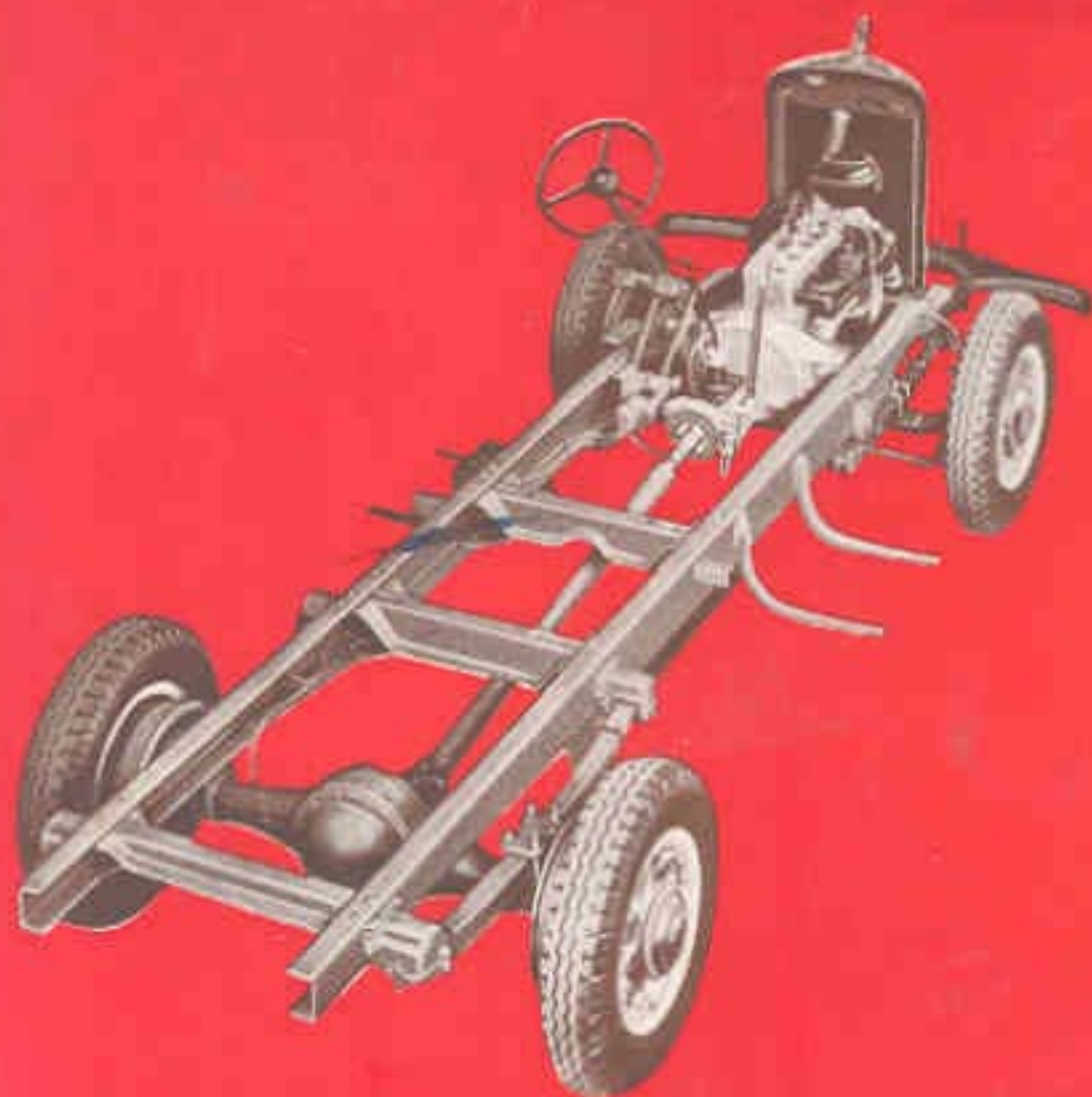
MACK TRUCKS, Inc.

New York, N. Y.

**AUTOLIT**



Automobile - Truck - Motorcycle 1900 to Present  
ORIGINAL Sales Brochures, Manuals, Books, Posters,  
Catalogs, and MUCH More. World's largest selection!



**Mack**

Bringing real truck stamina and dependability to the light delivery field, the Model ED offers new economy combined with tasteful style and impressive performance.

ERVILLE GARAGE

W. G. WALTER, Prop.  
ERVILLE, PENNA.



W	120 1/2	132 1/2
OL	198	214
LP	96	112
CA	52	68
AF	44	44

How long it served in your service of MACK models, accessories and improvements are affected through wear through and usage due to its construction. The type of service required by design specifications or other factors.

