

KENWORTH L700

THE KENWORTH L700
BRINGS QUALITY,
DURABILITY, AND MUSCLE
INTO THE URBAN
TRUCK MARKET.



STANDARD EQUIPMENT

ENGINE

Detroit-Diesel 6V92TA,
2-cycle
562 cu. in. displacement,
270 HP (S.A.E.) at 1950 RPM,
957 foot-pounds maximum torque at
1300 RPM.
Water-cooled with 190° ventless
thermostat.
Six cylinder,
Turbocharged,
28" diameter low-mounted fan,
Full flow oil filter,
Two fuel filters,
6V 12 CFM air compressor,
Automatic fan hub.

ELECTRICAL SYSTEM

12-volt lighting system with automatic
reset circuit breakers.
Circuits numbered and color coded.
Quick-disconnect modular type harnesses.
24 volt starting system with automatic
reset circuit breaker.
Four 8-volt, Group 4 batteries.
100 amp Lince-Neville coil-driven
alternator.
Cab-mounted self-canceling
directional signals with all flash
control.
Blinker headlamps.
Five marker lights in ICC location.
Dual stop and taillights/back up lights.
Front-side marker lights and reflectors.
Key start switch.

COOLING SYSTEM

1200H radiator with 1200 sq. in.
frontal area.
Removable top and bottom tanks.
Top tank baffled for deceleration.
Remote coolant recovery tank.
10 lb. pressure relief cap.
Full fan shroud.
Shutterless cooling.
Permanent-type anti-freeze.

EXHAUST

Single vertical exhaust system with
muffler, stainless steel flex section
for vibration isolation, and wide
bend clamps.
Exhaust stack height 10'8".

AIR INTAKE

Donaldson 14" ERA dry-type air
cleaner with filter restriction
indicator, automatic moisture
separator.
Molded rubber sleeves and stainless
steel clamps at all connections.

TRANSMISSION

Fuller RTD10, 10-speed twin-
countershaft.

Optional equipment shown available upon request

CLUTCH

Spicer angle spring 14" super duty
(optional) constant dampened full
clutch assembly.
Self-adjusting cover.
Two-plate full type with clutch brake.

DRIVELINE

Standard duty driveline with single center
bearing and needle bearing universal
joints.
Nylon coated splines.
Dampened driveline for sound attenuation.

FRONT AXLE

Rockwell FF90 LG, 12,000 lb. rated
capacity.
Forged aluminum hubs, 11-1/4" bolt
circle for disc wheels.
Oil seals.

FRONT SUSPENSION

12,000 lb. nominal capacity constant
rate coil spring 4" wide x 64" long.
Chrome vanadium steel, shot-peened
on tension side.
Threaded steel spring pins and bushings.

AUTOLIT



Automobile - Truck - Motorcycle 1900 to Present
ORIGINAL Sales Brochures, Manuals, Books, Posters,
Catalogs, and MUCH More. World's largest selection!

STANDARD EQUIPMENT

STEERING

Gammier manual steering gear with triple roller contact and aluminum housing.
22" steering wheel.

REAR AXLE

Rockwell SQ-100, hypoid single reduction tandem axle.
38,000 lb. rated capacity.
Forged aluminum hubs for disc wheels.
1 1/4" bolt circle.
Inter-axle differential lock out.
DH stats.

REAR SUSPENSION

Hendrickson MS-380 suspension.
38,000 lb. rated capacity.

SERVICE BRAKES

Quick change type.
Front 10-1/2" x 5".
Rear 16-1/2" x 7" S-cam.
Cast drums.

TIRES

11" x 24.5", 14 ply rated, steel belted radial highway tread (10 furnished).

WHEELS

24.5" x 8.25" disc lightweight steel (10 furnished).

FRAME

Heat-treated, 110,000 P.S.I. yield, steel.
10-3/4" frame depth with 3-1/2" flange width and 3/8" web thickness.
Square rear frame.

CAB

53" low cab forward style with back of cab on centerline of the front axle.
Steel frame with aluminum or fiberglass panels with all aluminum doors and continuous piano-type hinges.
Hydraulic cab latch and lift providing 53° tilt.

CAB FEATURES

ABS autumn smoke headliner and rear cab bed.
Fresh air heater, and integral adjustable defrosters.
Windshield: tinted, laminated safety glass.
Door windows: tinted, tempered safety glass, manual slide.
Safety window in right door.
Two-way vent in left door.
Stationary rear cab window.
Left and right inside door locks.
Full floor mat.
Insulation in cab roof, side and rear panels.
Removable instrument panel.
Aluminum grille.

ACCESSORIES

Dual air-operated variable speed windshield wipers with separate motors, heavy duty non-glare arms and parking control.
Electric windshield washers.
Cab Dome light.
Dual electric horns.
Dual 6" x 18" polished stainless steel mirrors on stainless steel brackets.
Inside sunvisor, driver's side.
Inside sunvisor, rider's side.
Cigarette lighter and ashtray.
Arm rest on door.
Black vinyl hood blanket.
Driver and rider side grab handles.
Seat belts.
Self-cancelling directional signal control with dimmer switch.

SEATS

DRIVER - Bostrom Deluxe Thin Line.
RIDER - Seat with foam padding, 20" wide cushion on back, upholstered with black vinyl.

WARNING LIGHTS

Low air pressure warning light and buzzer.
High beam indicator.
High water temperature (210°F.) and low oil pressure warning light and buzzer.
Inter-axle differential warning light.
Electric back-up alarm wiring and plug.
Low coolant indicator.

INSTRUMENTS AND GAUGES

Voltmeter.
Speedometer, with odometer (electronic).
Electronic tachometer.
Engine oil pressure gauge.
Water temperature gauge.
Reservoir air pressure gauges.
Electric fuel gauge.
Air application gauge.

PARKING BRAKE

MGM brake - dual wheel, spring applied/air release.

FUEL TANK

One 80 gallon 22" diameter steel tank behind the cab on right hand side.

MISCELLANEOUS EQUIPMENT

Steel bumper 58" setting.
Front mud flaps.
Two anti-slip mud flaps at rear.
Aluminum parallel battery box LH back of cab.
Operator's Manual.
Removable front tow hook.
Nylon air piping throughout.

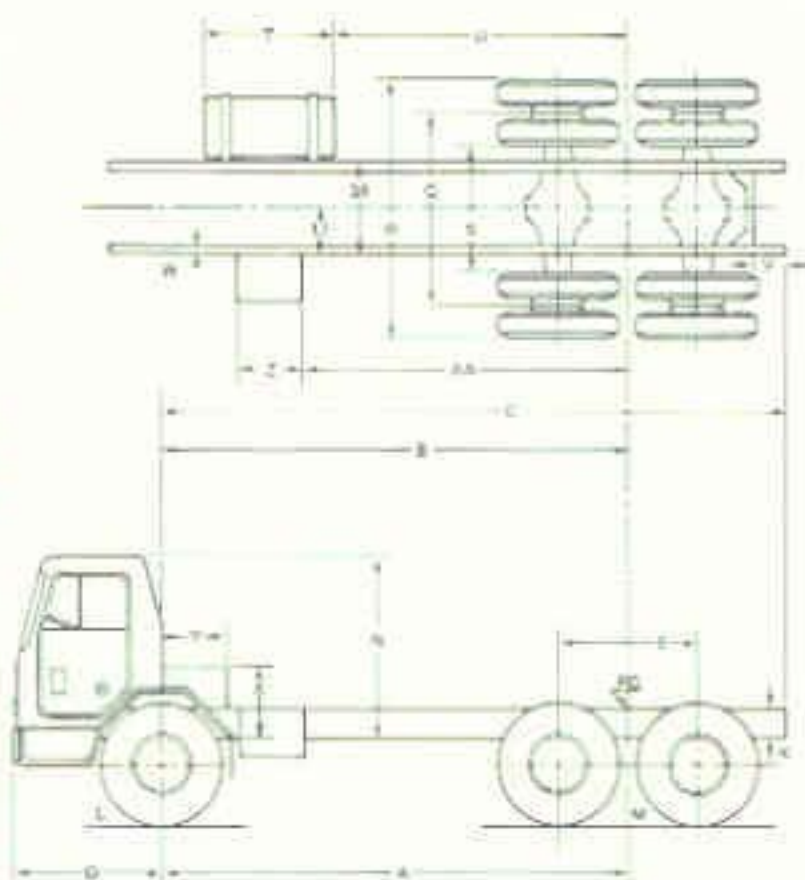
PAINT

One solid color for cab and frame.



THE KENWORTH L-700 BODY BUILDERS' DIMENSIONS

A	WHEELBASE	Variable
B	BACK OF CAB TO C/L ENGINE	Variable
C	BACK OF CAB TO END OF FRAME	400"
D	FRONT BUMPER TO FRONT AXLE	58"
E	REAR AXLE SPACING	52"
F	REAR FRAME HEIGHT UNLOADED	Variable
G	REAR FRAME HEIGHT LOADED	Variable
H	FRONT FRAME HEIGHT UNLOADED	Variable
J	FRONT FRAME HEIGHT LOADED	Variable
K	FRAME CHANNEL DEPTH	10.75" Std., 10.125" Optional
L	TIRE SIZE, FRONT	Optional
M	TIRE SIZE, REAR	Optional
N	CAB HEIGHT	68"
O	FRAME TO REAR WINDOW	33" Non.
P	REAR WINDOW SIZE	17 x 28
Q	TRACK	Variable
R	WIDTH O.A.	Variable
S	FACE TO FACE INSIDE TIRE	Variable
T	FUEL TANK LENGTH	60 Gal - 42" 75 Gal - 57.5"
U	FUEL TANK LOCATION	60 Gal - 92.75" 75 Gal - 98.5"
V	REAR C.M. LOCATION	Flush
W	FLANGE WIDTH	10" W/O, 10.75" W/
X	ENGINE ABOVE FRAME	NTC, X - 28.8" 6171, X - 24.3" 3306, X - 19.5"
Y	BACK OF CAB TO BACK OF ENGINE	NTC, Y - 17" 6171, Y - 26" 3306, Y - 20.5"
Z	BATTERY BOX LENGTH	31.5"
A-A	BATTERY BOX LOCATION	100.5"



SPECIFICATIONS SUBJECT TO CHANGE WITHOUT NOTICE.



Kenworth Truck Company
P.O. Box 1000
Kirkland, Washington 98033

A DIVISION OF **DAVEGAR**

KW3353H LITHO IN U.S.A. KW PUB. 6-81

AUTOLIT



Automobile - Truck - Motorcycle 1900 to Present
ORIGINAL Sales Brochures, Manuals, Books, Posters,
Catalogs, and MUCH More. World's largest selection!