

SUPER TRUCK

GIANT PULL-OUT
POSTER INSIDE!

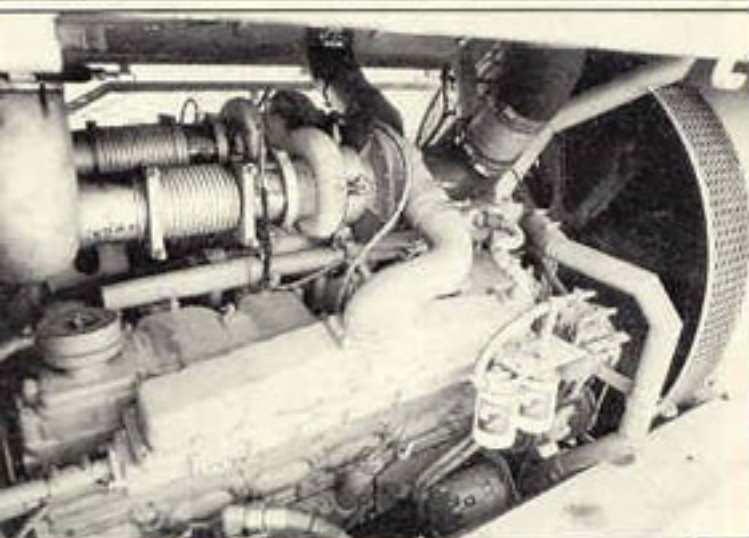
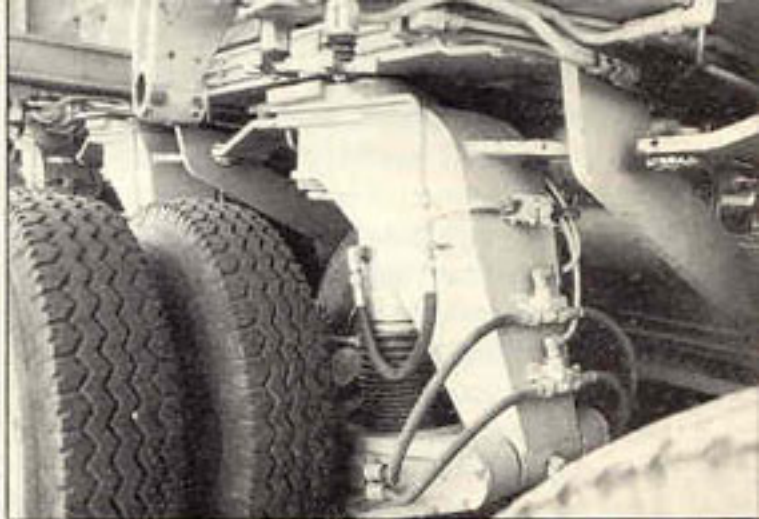
A TRUCK SPECIAL £1.50



HIGH, WIDE AND HANDSOME KENWORTH'S 700hp SUPER-HEAVIES · IVECO IN THE MARBLE MOUNTAINS · TRUCKS AS HIGH AS HOUSES · RIDING THE BANKING WITH THE TRUCK RACERS · HAULING TO LAS VEGAS IN A 90mph POWERLINER · TAMING THE ROARING DESERT LION · KINGS OF THE QUARRY TRUCKS... **AND MORE!**



Giant loaded tank of sea water is just a dummy run for transporting a complete knocked-down nuclear reactor. The giant rig takes over the road, and special crews have to raise power lines to let the monster cross railway tracks. Drivers in Kenworths fore and aft talk to each other by radio for gearshifts. Support crews take a break before the next obstacle



18 axle modular Trabosa trailer has steering on each axle, (top right) operated from a platform at the back (left, top and centre). Trailer can keep load level on slopes of up to five-and-a-half percent. Each Kenworth 993 tractor has massive V12 Cummins giving 700bhp and 1900lb ft of torque. Cooling system radiator is mounted behind cab, and the engine is installed amidships