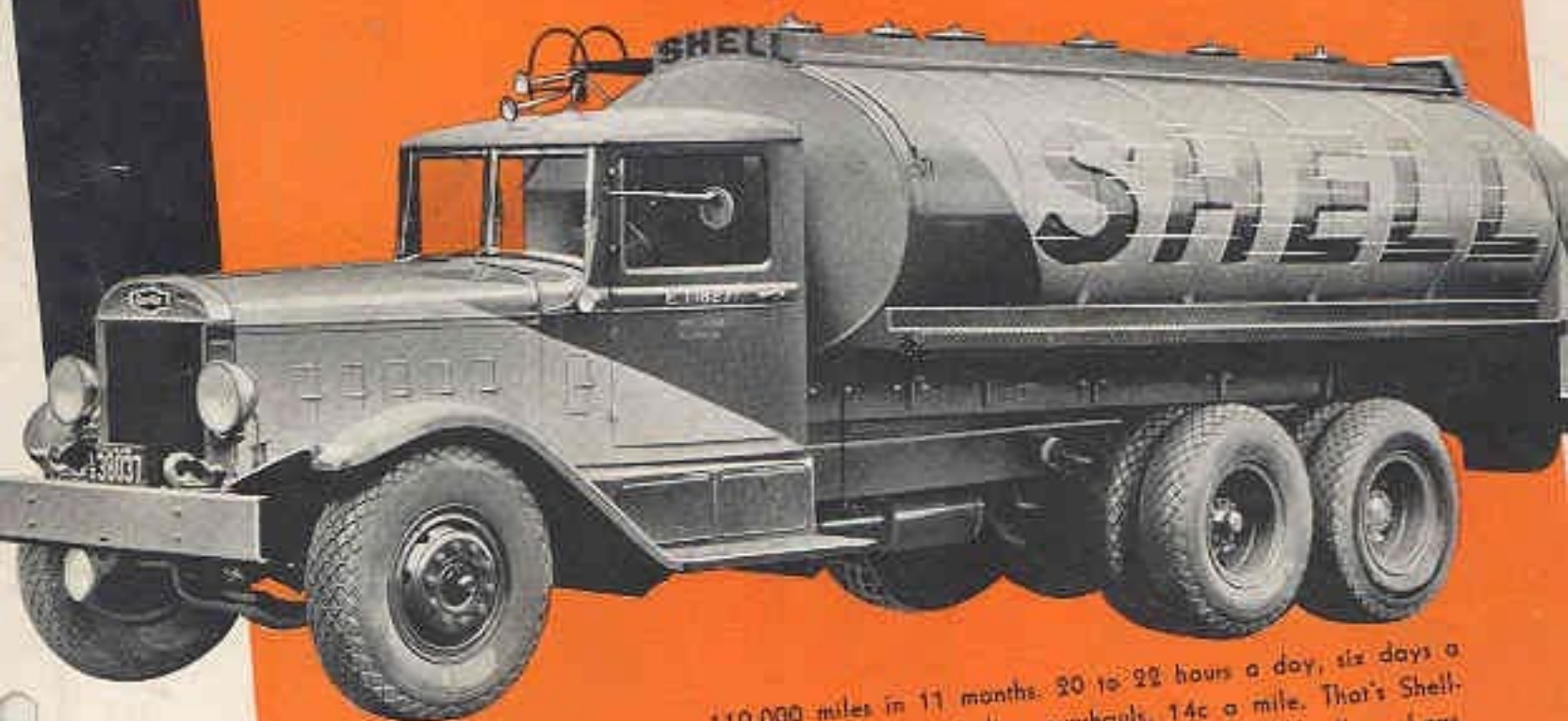


# AUTOCAR DIESEL TRUCKS



110,000 miles in 11 months. 20 to 22 hours a day, six days a week. Total cost, including overhauls, 14c a mile. That's Shell-Eastern's record with an Autocar-Diesel hauling 3200 gallons of gas.

**THESE HAULERS SAVE  
FUEL COSTS WITH DIESEL  
AND MAINTENANCE COSTS  
WITH AUTOCAR**

Autocar is the seasoned choice of these movers-of-tremendous-loads. They have learned by experience that when a truck hauls ten, twenty, and even thirty-ton loads, it must be engineered by experts with sure knowledge of the incredible strains it will meet. They know the very steel it is made of must be designed for the job and fabricated with the utmost care. They realize it must be the product of a long and wide heavy-duty background. Those who buy their first Autocar on faith always find that experience justifies their choice.



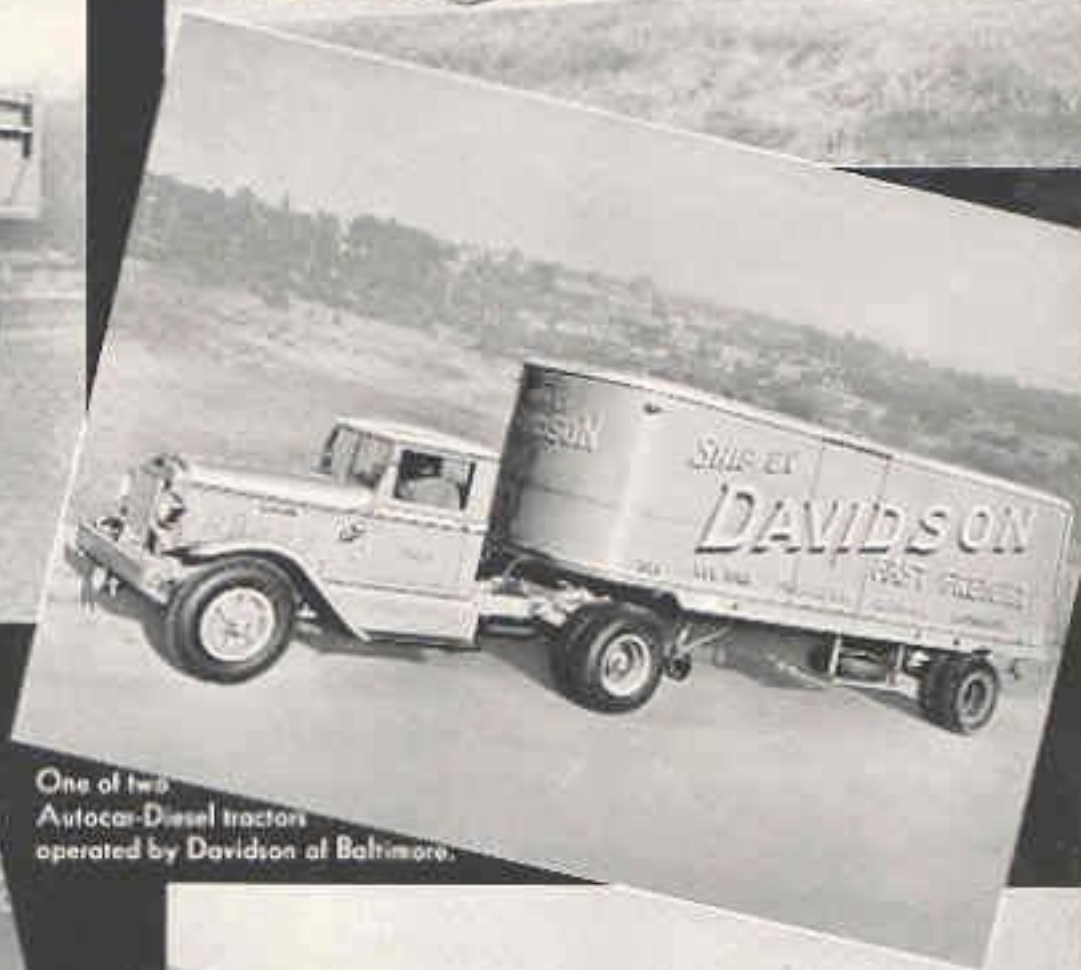
*Above: George Grifall, Mountain View, Calif., moves 20-ton loads behind this Autocar-Diesel dual-axle semi-trailer, at 8½ miles per gallon. He travels 6% grades in direct second, and cuts his gasoline trip-time by 17%.*



*Right: Crow Transportation Co.'s Autocar-Diesel carries 55 acetylene cylinders on its own chassis, and tows 195 oxygen cylinders behind, over mountain roads of Southern California.*

Right: The largest livestock haulers in Southern California use two of the world's largest cattle trucks—Autocar Diesels, 213-inch wheelbase with 22-foot bodies on both truck and trailer.

Now: Hauling eight yards of road materials on 78" wheelbase is child's play for this Autocar-Diesel owned by Ward Bros., Suffern, N. Y. Fast schedules and long hours make it highly profitable.



One of two Autocar-Diesel tractors operated by Davidson of Baltimore.



Right: This 6NF Autocar-Diesel has a 20½-foot van body on 213" wheelbase.



# PROVED IN SERVICE

East and West and in between, but principally in California, of course, Autocar-Diesels are doing extra-heavy-duty work for extra-frugal customers of whom some, but not all, we regret to admit, are printed here below.

- J. O. Bay, Fresno, California.
- \*California Motor Express Ltd., San Francisco, California.
- Contract Carriers, Inc., Fresno, California.
- Crow Transportation Co., Los Angeles, California.
- Davidson Transfer & Storage Co., Baltimore, Md.
- \*J. A. Draffan, Inc., Los Angeles, California.
- Esheart & Lewis, Los Angeles, California.
- Jack Elmore, Los Angeles, California.
- J. & V. Garibaldi Truck Co., Los Angeles, California.
- H. L. Garden, Arroyo, California.
- \*Geo. T. Gilfill, Mountain View, California.
- \*O. M. Hansen, Bell, California.
- L. R. B. Drayage Co., Fresno, California.
- McCarty Trucking Co., San Pedro, California.
- \*Milk Transportation Co., New York.
- Penhall Bros., Inc., Westminster, California.
- J. J. Pfeiffer, Albany, California.
- Rhodes & McCandoo, San Francisco, California.
- Joe Ramona, Los Binos, California.
- \*Safe-way Stores, Inc., Los Angeles, California.
- \*San Pedro Docks, San Pedro, California.
- Shell-Eastern Petroleum Co., New York.
- Standard Oil Co. of Ohio, Cleveland.
- \*System Arizona Express Service, Los Angeles, California.
- \*J. W. Tracy, Los Angeles, California.
- \*Ward Bros., Suffern, N. Y.
- \*Western Truck Lines, Ltd., Los Angeles, California.

Asterisks indicate multiple ownership.

*"Follow the Leaders  
for they Know the Way"*



Operating out of Cleveland this Autocar-Diesel delivers bulk loads of gasoline on fast schedules for the Standard Oil of Ohio. The full trailer doubles its capacity. Notice the Autocar DeLuxe Cab.



Built to comply with the laws of both California and Oregon, this Autocar-Diesel tractor's 22-foot trailer has a five-foot tail gate which can be lowered to carry additional all drums. It is owned by Contract Carriers, Inc., Fresno, Calif.

This superb tractor-trailer unit, owned by California Motor Express Ltd., San Francisco, is an NFI Autocar-Diesel of 158" wheelbase. It has a record of 100,000 miles without road failure.



## AUTOCAR TRUCKS

ARDMORE, PENNSYLVANIA—Factory Branches in Leading Cities