

SK387-AT3

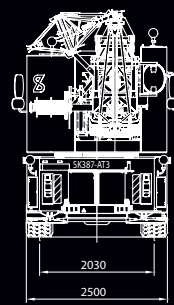
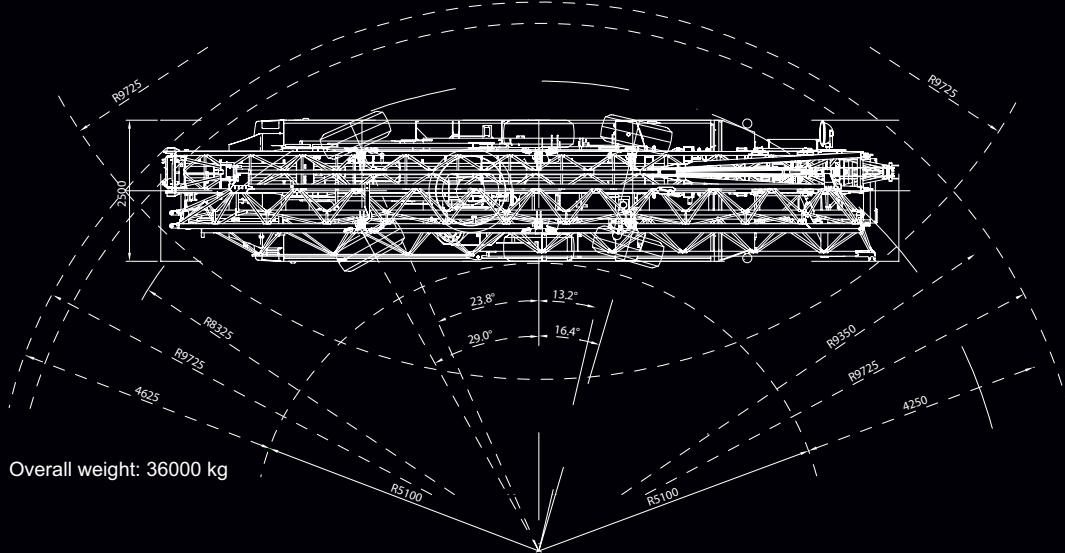
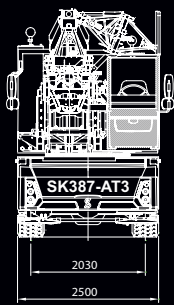
CITY BOY

ECO DRIVE



**BRAND
NEW**

SPIERINGS, A NEW GENERATION MOBILE CRANES

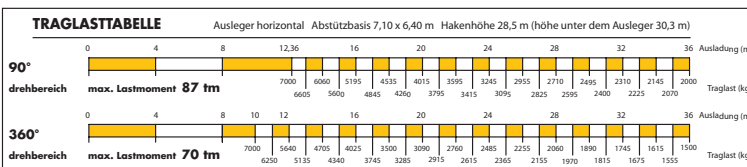
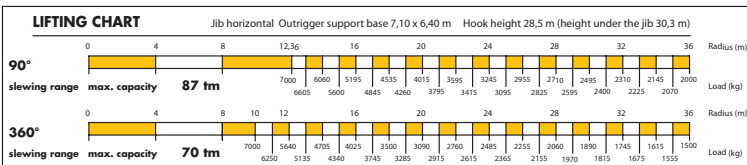
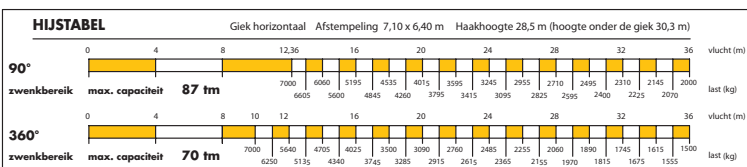
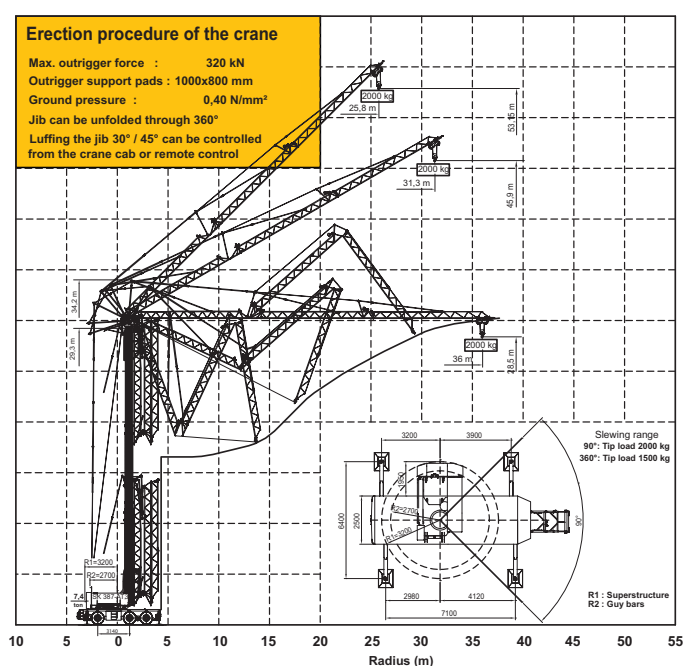


Overall weight: 36000 kg

FULL ELECTRIC WHILE DRIVING AND CRANE OPERATION (ZERO EMISSION) CABIN WITH 3 FUNCTIONS: • TRUCK CABIN • CRANE CABIN • LIFT

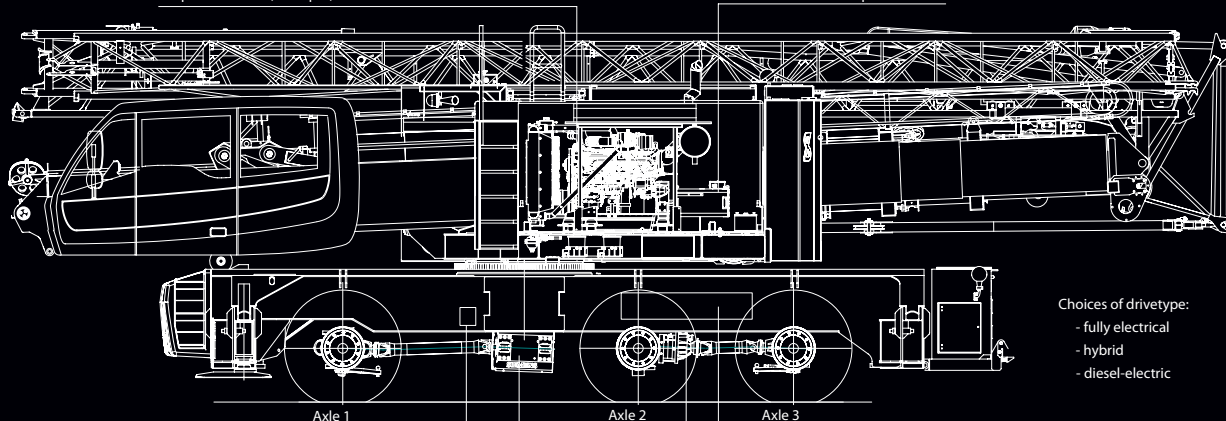
Erection procedure of the crane

Max. outrigger force : 320 kN
 Outrigger support pads : 1000x800 mm
 Ground pressure : 0,40 N/mm²
 Jib can be unfolded through 360°
 Luffing the jib 30° / 45° can be controlled from the crane cab or remote control



Superstructure:
 John Deere 6068HF485
 Power: 205kW (2400tpm)
 Torque: 1025Nm (1400tpm)

PM synchr. generator
 Power: 220kW/2400tpm



Power supply: 400V/32A

PM synchr. motor
 Power: 400kW/900-3500tpm
 Torque: 4500Nm/0-900tpm

Creep drive:
 Power: 40kW
 Torque: 4190Nm

Battery pack:
 Lithium-ion cells 30kWh
 Max. discharge-current: 225A
 Max. charge-current: 180A

Choices of drivetype:
 - fully electrical
 - hybrid
 - diesel-electric

changes subject to modifications

SPIERINGS, A NEW GENERATION MOBILE CRANES