

## STANDARD SPECIFICATIONS

(Based on Model CX612 4x2 Tractor)  
Canadian orders require Engine Block Heaters.

### ENGINE: AC-310/330 ASET

Horsepower, 310 HP [231 kW] at 1800 Gov. RPM  
Peak Horsepower, 330 HP [246 kW] at 1500 RPM  
Max. Torque, 1360 lb/ft [1 844 N•m] at 1100 RPM  
V-MAC III—Total Vehicle Electronics  
Lube Oil System, Full Flow ESI +  
Centri-Max® Ultra  
Centrifugal Oil Filter  
Flywheel Housing, Aluminum  
Silicone Hoses and Tubing on Engine  
Air Compressor, Chassis Mounted 18.7 cfm min. rtg. w/  
Air Governor  
Starting System  
Starter, 12-Volt 39MT Type 500  
Batteries, (3) Mack 12-Volt M/F Type, 660 CCA  
Total 1980 CCA with Kalas Cables  
Alternator, 12V 100A, Delco (24 SI)  
Air Intake System  
Air Cleaner, 11" [279 mm] Single Element  
Dry Type, Under Hood  
Air Intake from Both Sides of Hood  
Air Restriction Monitor, Grad. Lock Up Type(Air Intake Mtd.)  
Exhaust, Vertical w/ Muffler Heat Shield  
Cooling System—Shutterless Type  
Aluminum Radiator  
Anti-Freeze to -10°F [-23°C]  
Fan Drive, Electronically Modulated Type  
w/Lightweight Plastic Fan  
Poly-V Fan Belt w/Automatic Tensioner  
Coolant Recovery Tank—6 Quart [5.7L]

### CLUTCH: EATON FULLER, CL798

15.5" [394 mm] Ceramic Dampened Disc, 2-Plate, Coaxial Spring

### TRANSMISSION: FULLER, FRO-13210C

10-Speed, Ratios: 12.69 Low—0.74 High  
Driveline: Meritor 17N HD w/Coated Splines

### CAB: CONVENTIONAL, CA65

Interior Features:

Basic: Trim Level; Color: Select Pewter Gray  
Ash Tray  
Cigar Lighter  
CB—5-way Binding Post  
Coat Hook  
Dispatch Box  
Overhead Console  
Radio Accomodations  
Air Conditioner w/Integral Heater with R134a Refrigerant  
Dome Light w/Self-Contained Swtich "On" when Driver or  
Rider Side Door is Open  
Door Mounted Courtesy Lamp, "On" when Driver or  
Rider Side Door is Open  
Steering Wheel, 18" Dia. 2-Spoke Soft Feel  
Tilt & Telescope Steering Column

Seats:

Driver's, Bostrom Talladegha 915 (Mid-Back)  
Rider's, MACK Non-Suspension (Mid-Back)  
Seat Belts—Driver's and Rider's  
Lap & Shoulder w/Seat Belt Retractor & "Komfort Latch"  
Sun Visor—Left Side  
Floor Mats, Rubber w/Closed Cell Vinyl Nitrile Backing

# MACK

## CXN602

SERIES

## CHASSIS



- Conventional Chassis
- Set-Back Front Axle
- 4-Wheel Tractor

The MACK CXN602 is for fleet owner and owner-operator alike, a total chassis optimized through computer-aided design for an excellent strength-to-weight ratio. The cab incorporates exceptional room and comfort with the highest standards of fit and finish. The cab ride is an innovative cab air suspension, for unsurpassed smoothness and comfort. The axle-back configuration contributes to handling ease, while the quiet roomy interior caters to the driver's every need.

### STANDARD

**ENGINE:** MACK AC-310/330 ASET  
330 HP [246 kW] Peak Horsepower

**TRANSMISSION:** FULLER, FRO-13210C  
10-Speed

**FRONT AXLE:** MACK FXL12  
12,000 lb. [5 443 kg] Capacity

**REAR AXLE:** MERITOR RS-23-161  
23,000 lb. [10 433 kg] Capacity  
Suspension: Multileaf Spring



**STANDARD SPECIFICATIONS**

(Continued)

**CAB:** continued

Interior Features: Operational:

- T.M.C. Recommended Instrument Panel
- Air Pressure Gauge
- Voltmeter
- Fuel Level Gauge
- Engine Oil Pressure Gauge
- Engine Coolant Temperature Gauge
- Low Air Pressure Indicator (Light and Buzzer)
- Speedometer/Trip Odometer, Electronic
- Tachometer w/Hourmeter, Electronic
- High Beam Indicator
- Parking Brake On Indicator
- Key Type Starting
- Hand Throttle Control
- Engine Shutoff, Key-Type Control
- Courtesy Light Switch (Head & Clearance)
- Directional Signal Switch

Exterior Features:

- Welded Steel Shell, Galvanized
- MACK Rust Preventative Procedures
- Safety Glass Windows
- Tinted Windshields, Side and Rear Windows
- Conspicuity Treatment, Back of Cab
- Windshield Wipers—Dual Actuated Arms, Cowl Mtd.
- Wiper Motor Two Speed Electric with Intermittent Feature
- Windshield Washers, Electric, Wiper Arm Mtd. with Reservoir Mounted Under Hood
- Mirrors, West Coast Type Aero Mirror
- Headlamps—Flush Mounted Halogen—Single Rectangular w/Lexan Lens (Replaceable Bulb) Bezel—Bright Finish (molded plastic)
- Daytime Running Lights
- Identification and Clearance Lamps (5)
- Side Markers—Lamps and Reflectors
- Front Integral Turn Signals with Fender
- Transistorized Flasher
- Horns, (1) MACK Rectangular Single Trumpet Air Horn, Electric, (Single Tone)
- Doors—Galvanized Steel with:
  - Visibility Door with Roll-Up Tinted Windows
- Grab Handles (Slip Resistant) RH & LH Behind Door
- Cab Mounting:
  - Two Mounting Brackets at Front
  - Air Isolation at Rear

**HOOD & FENDERS: FIBERGLASS**

- SMC (Sheet Molding Compound)
- Fiberglass with Wheel Splash Aprons
- Tilts Forward 75° with Spring Assist
- Grille—Hood Mounted Bright Finish Bars with Bright Finish Surround

**FRAME:**

- WB—Wheelbase—138" [3 500 mm]
- LP—Load Platform— 117" [2 972 mm]
- CA—Cab to Axle—76.3" [1 937 mm]
- AF—C/L Axles to End of Frame—41" [1 041 mm]
- Frame Rails—Steel
- Cross Section—10.47" x 3.54" x .24" [266 x 90 x 6 mm]
- Section Modulus—11.52 in.<sup>3</sup> [189 cm<sup>3</sup>]
- RBM (per rail) —1,382,400 lb. in. [156 000 N•m]
- Tapered and Flanged—28° Rail Ends
- Bumper: Non-Metallic Flexible Flush Mounting
- BBC—Bumper to Back of Cab—113.4" [2 880 mm]
- Towing: Clevis (2)
- Fifth Wheel: ASF Simplex Lite Air Slide

**FUEL TANKS:**

- Aluminum, 26" [640 mm] Dia.
- Capacity/Location, 72 gal [360 L] LH & RH

**FRONT AXLE: MACK FXL12**

- Set Back Front Axle
- 12,000 lb [5 443 kg] Capacity
- Brakes, "S" Cam 15" x 4" [381 x 102 mm]
  - Meritor "Q-Plus" Brakes w/o Dust Shields
  - Slack Adjusters—Automatic
- Suspension, MACK Taperleaf Spring (2 Leaf) with 12,000 lb [5443 kg] Ground Load Rating
- Shock Absorbers
- Integral Power Steering
- Wheel Equipment, 22.5" x 8.25" Accuride 10 Hole, 11.25" Bolt Circle, 5 Hand Holes Hub Piloted Steel Disc Wheels
- Wheel Seals—Oil
- Tires: 295/75R22.5 (singles)

**REAR AXLE: MERITOR RS-23-161**

- 23,000 lb [10 433 kg] Capacity Axle
- Carrier—Malleable
- Suspension—Mack 23,000 lb [10 433 kg] Capacity Air Suspension
- Brakes—"S" Cam 16.5" x 7" [419 x 178 mm]
  - Meritor "Q-Plus" Brakes w/o Dust Shields
  - Slack Adjusters—Automatic
  - Aux. Spring Brake Chambers, 30/30 Double Diaphragm Type, Mechanical Spring Release 2 Units
- Wheel Equipment, 22.5" x 8.25" Accuride 10 Hole, 11.25" Bolt Circle, 5 Hand Holes Hub Piloted Steel Disc Wheels
- Wheel Seals—Oil
- Tires: 295/75R22.5 (duals)

**AIR/BRAKE:**

- ABS (Anti-Lock Brake System)
- Dual Air Brake System
- Air Reservoirs—
  - Two Steel, Horizontal Mtd. on RH Rail Forward of Fuel Tank, Primary—Single Compartment Tank, Supply/Secondary—Two Compartment
- Capacity—5,600 in<sup>3</sup> [92 L]
- Air Dryer—Heated
- Semi-Trailer Connection Package
  - Air Brake Grouping
    - Chassis Mtd. Pogo Stick
    - 12-ft Air Hose (2)
    - Glad Hand (2)
    - Glad Hand Storage Bracket (B.O.C.—LH Ground Reachable)
  - Breakaway Safety Valve
  - Hand Control Valve for Trailer Brakes
  - Electric Grouping
    - 12-ft (7-Wire) Cord
    - 7-Wire Plugs

**ELECTRICAL:**

- Steel Battery Box with Molded Plastic Cover Mtd. Forward of LH Fuel Tank
- Chassis Electrical
  - Negative Ground
  - 12-Volt Electrical Circuits and Bulbs
  - Fuse Protected Circuits
  - Breaker Protected Headlamp & Windshield Wiper Circuits
  - Rear Lighting, (2) Combination Stop, Tail Directional & Back-up Lights
- Trailer Electrical Package for Doubles Operation

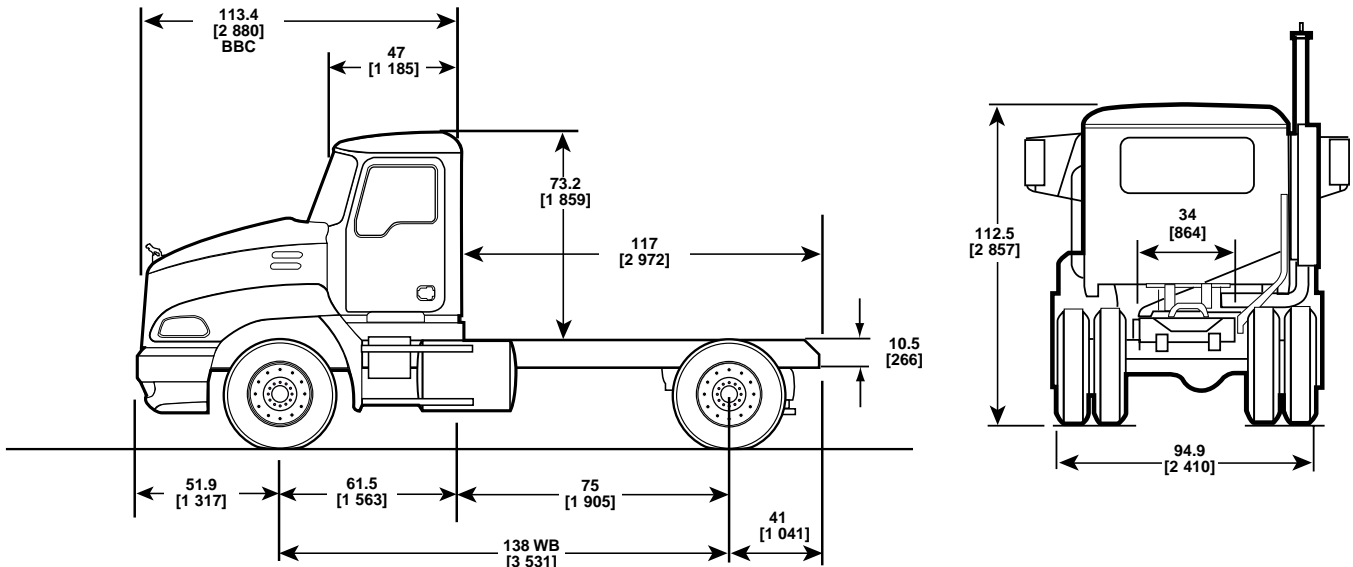
**PAINT:**

- Cab, Hood and Fenders
  - Color: MACK White, High Gloss Urethane
- Chassis Running Gear
  - Color: MACK Black (Urethane)

**WEIGHT:**

- Front: 8,072
- Rear: 3,659
- TOTAL: 11,731

## CHASSIS SPECIFICATIONS



### AVAILABLE DRIVE LINE COMPONENTS

TRANSMISSIONS		
MODEL	SPEEDS	RATIOS (LOW/HIGH)
<b>MACK</b>		
T309	9	11.40/0.71
T309(L)	9	13.93/0.71
T309(LR)	9	13.93/0.71
T310	10	13.81/0.73
T310M	10	17.35/0.73
T310ME	10	17.35/0.73
T313LR	13	16.42/0.71
T313 L	3	16.42/0.71
T318LR	18	16.42/0.71
T318L	18	16.42/0.71
T318L21	18	16.42/0.71
<b>ALLISON</b>		
4000 HS	5	3.51/0.74
4000 HS	6	3.51/0.64
4500 HS	5	4.70/0.76
4500 HS	6	4.70/0.67
<b>FULLER</b>		
RTX-13609B	9	12.57/0.73
RTX-14609B	9	12.57/0.73
RTX-16709B	9	12.46/0.73
FR-13210B	10	14.80/1.00
FR-14210B	10	14.80/1.00
FRO-13210B	10	11.06/0.75
FRO-13210C	10	12.69/0.74
FRO-14210B	10	11.06/0.75
FRO-14210C	10	12.69/0.74
FRO-15210B	10	11.06/0.75
FRO-15210C	10	12.69/0.74
FRO-16210B	10	11.06/0.75
FRO-16210C	10	12.69/0.74
RTO-14908LL	10	14.56/0.74
RTO-16908LL	10	14.56/0.74
RTO-16909ALL	11	26.08/0.73
RTLO-14913A	13	12.31/0.73
RTLO-16913A	13	12.31/0.73
RT-14915	15	16.94/1.00
RTO-14915	15	13.29/0.79
RTO-16915	15	13.29/0.79
RTLO-14918B	18	14.40/0.73
RTLO-16918B	18	14.40/0.73
<b>FULLER LIGHTNING TOP 2</b>		
FRLO-14410C-T2	10	12.66/0.74
FRLO-15410C-T2	10	12.66/0.74
FRLO-16410C-T2	10	12.66/0.74

ENGINES			
MODE	*HORSEPOWER @ GOV'D. RPM	MODEL	*HORSEPOWER @ GOV'D. RPM
<b>MACK—ASET CEGR</b>			
AC-310/330	310 HP [231 kW] @ 1800 330 HP [246 kW] @ 1400-1500	AC-400	400 HP [298 kW] @ 1800 400 HP [298 kW] @ 1500-1800
AC-330/350	330 HP [246 kW] @ 1800 350 HP [261 kW] @ 1400-1500	AC-427	427 HP [318 kW] @ 1800 427 HP [318 kW] @ 1600-1800
AC-355/380	355 HP [265 kW] @ 1800 380 HP [284 kW] @ 1400-1500	AC-460P	460 HP [343 kW] @ 1850 487 HP [363 kW] @ 1600-1700
AC-380/410	380 HP [238 kW] @ 1800 410 HP [305 kW] @ 1400-1500	AC-460E (ECONOMY)	460 HP [343 kW] @ 1800 460 HP [343 kW] @ 1600-1800
AC-350	350 HP [261 kW] @ 1800 350 HP [261 kW] @ 1500		

TRANSMISSIONS (Continued)					
MODEL	SPEEDS	RATIOS (LOW/HIGH)	MODEL	SPEEDS	RATIOS (LOW/HIGH)
<b>FULLER LIGHTNING W/O TOP 2</b>					
FRLO-14410C	10	12.66/0.74	FRLO-16410C	10	12.66/0.74
FRLO-15410C	10	12.66/0.74			
<b>GENERATION II—FULLER AUTO SHIFT</b>					
RTO-14910B-AS2	10	10.96/0.74	RTO-16910C-AS2	10	12.80/0.73
RTO-16910B-AS2	10	10.96/0.74	RTLO-14918C-AS2	18	12.19/0.73
RTO-14910C-AS2	10	12.80/0.73	RTLO-16918C-AS2	18	19/0.73
<b>GENERATION II—FULLER ULTRA SHIFT</b>					
RTO-14910B-DM2	10	10.96/0.74	RTO-16910B-DM2	10	10.96/0.74
<b>MERITOR</b>					
M-14G10A-M14	10	15.02/1.00	MO-13G10C-M13	10	12.72/0.73
M-15G10A-M15	10	15.02/1.00	MO-14G10A-M14	10	11.19/0.74
MO-11G10A-M11	10	11.19/0.74	MO-14G10C-M14	10	12.72/0.73
MO-11G10C-M11	10	12.72/0.73	MO-15G10A-M15	10	11.19/0.74
MO-13G10A-M13	10	11.19/0.74	MO-15G10C-M15	10	12.72/0.73

AXLES					
CAPACITY	MAKE	MODEL	CAPACITY	MAKE	MODEL
<b>FRONT AXLES</b>			<b>SINGLE REAR AXLES</b>		
12,000 lb. [5 443 kg]	MACK	FXL 12	23,000 lb. [10 433 kg]	MACK	RA23R
	DANA SPICER	E12021		DANA SPICER	23105S
	MERITOR	FF961 or FF981		MERITOR	RS-23-161/186
14,600 lb [6 623 kg]	MACK	FXL 14.6			

## OPTIONAL EQUIPMENT

### FRAME:

#### Optional Frame Rails

Rail Dimensions: 10.47" x 3.54" x .28" [266 x 90 x 7 mm]  
Section Modulus: 13.3 in.<sup>3</sup> [217.9 cm<sup>3</sup>]  
Resisting Bending Moment, RBM: 1,600,000 lbs. in. [180 000 N•m]

Rail Dimensions: 10.47" x 3.54" x .31" [266 x 90 x 8 mm]  
Section Modulus: 15.0 in.<sup>3</sup> [245.8 cm<sup>3</sup>]  
Resisting Bending Moment, RBM: 1,810,000 lbs. in. [203 000 N•m]

#### Wheelbase Availability

138" [3 505 mm] to 238" [6 045 mm]

### CAB, INTERIOR TRIM LEVELS:

**Trim Level I - Select:** Pewter Gray Interior; Dark Fieldstone (Day Cab Only)

**Trim Level II - Premium:** Garnet Red, Glacier Blue, Desert Sand or Dark Fieldstone Interiors available; Graphite Gray (N/A with Sleepers)  
(Color is accent on base gray background)

**Trim Level III - Elite:** Garnet Red, Glacier Blue, Desert Sand or Dark Field Stone Interiors available. Features Ultra Leather Custom Pad Fabric Headliner.

**SLEEPER BOXES:** Interior Color Matches that of the Cab Interior; Sleeper Box Integral with Cab Mounting

48" [1 219 mm] Flat Top

56" [1 423 mm] Flat Top

60" [1 524 mm] Mid Rise

70" [1 778 mm] Mid Rise

### AERO AIDS:

Roof Fairing  
Side Shields  
Roof Air Reflector

### OTHER OPTIONAL EQUIPMENT:

Air Compressor Options  
Air Dryer Options  
Air Horns  
Air Reservoirs, Aluminum  
Back-Up Alarm  
Battery Box Cover, Aluminum  
Battery Disconnect Switch  
Battery Options  
Brake Equipment Options  
Bright Finish Equipment:  
    Air Reservoirs  
    Battery Box Cover  
    Bumper  
    Exhaust Systems  
    Fuel Tanks  
    Mirrors and Brackets  
    Steps  
    Wheels, Disc  
    Bug Screen  
Bumper—Stainless Steel, Clad Aluminum,  
    Painted Steel  
CB Radio Options  
Cab Accessories  
Chassis Keyed Alike  
Clutch, Self-Adjusting  
Coolant Protection to -40°F  
Crossmember Options  
Drain Valve, Automatic  
Driveline, Increased Size  
Electrical Circuit Breaker

Electrical:  
    Starter Options  
    Alternator Options  
Engine Brake  
Engine Cold Starting Aids  
Engine Heaters  
Exhaust, Dual Vertical  
Fifth Wheels and Related Equipment  
Fog/Driving Lights  
Fuel Heaters  
Fuel System:  
    Fast Fill & Accessory Options  
    Dual Draw  
Fuel/Water Separators  
Gauge Cluster Options:  
    Air Application  
    Axle Oil Temperature  
    Engine Oil Temperature  
    Exhaust Pyrometer  
    Manifold Pressure  
    Transmission Oil Temperature  
Hubodometer  
Inside/Outside Air Intake  
Interwheel Power Divider  
Inversion Valve, Spring Brakes  
Mirror Options  
Paint Designs (Cab & Hood)  
Power Take-Off Options & Clearances  
Power Windows and Door Locks  
Quarter Fenders

Radio Options, Stereo/Cassette/CD  
Rear Axle Carrier Options  
Seat Options, Driver & Rider  
Sleeper Box Interior Options  
Sun Visor, Exterior  
Suspension, Rear Axle: Multileaf or Air  
Synthetic Lubricants  
Tires  
Trailer Access Packages  
    Trailer Connection Packages & Accessory  
Options  
    Trailer Hook-Up Lamp  
Transistorized Flashers  
Transmission Cooler  
VIP (Vehicle Information Profiler)  
Vinyl Stripe Designs (Cab & Hood)  
Wheel Equipment:  
    Spoke, Steel or Aluminum Disc  
    Hub & Drum Equipment  
Wheel Seals

OTHER COMPONENT OPTIONS  
MAY BE AVAILABLE UPON REQUEST.