

## STANDARD SPECIFICATIONS

### MODEL DESIGNATION CHU603

#### ENGINE: MACK MP8-425E

Peak Horsepower – 425HP at 1500-1800 RPM  
Horsepower – 425 HP at 1800 Gov. RPM  
Max. Torque – 1560 lb/ft at 1200 RPM  
V-MAC IV – Total Vehicle Electronics  
Air Compressor – Meritor/WABCO 318 (18.7 cfm)  
Air Cleaner, 11" Single Element  
Dry Type, Under Hood  
Air Intake from Both Sides of Hood  
Alternator, 12V 100A – Delco (24SI)  
Batteries, (3) Mack 12V M/F Group – 650 CCA  
Total 1950 CCA w/Kalas Cables  
Coolant Protection - 34°F (-37°C)  
Mack Coolant Conditioner  
Diesel Particulate Filter – Vertical RH Side Back of Cab  
Exhaust After Treatment System, Ceramic Catalyzed  
Engine Brake – Mack Powerleash  
Silicone Engine Hoses and Tubing  
Poly-V Fan Belt w/Automatic Tensioner  
Fan Drive, Electronically Modulated Type  
Flywheel Housing, Aluminum  
Fuel Water Separator  
Mack EPDM Radiator & Heater Hoses  
Aluminum Radiator  
Starter, 12V Gear Reduction  
Electronic Starter Interlock

#### CLUTCH: EATON/FULLER, CL798

15.5" Two-Plate w/Dampened Ceramic Coax  
Manual Adjust  
9-Spring 4-Paddle Driven Disc & 2" Diameter Spline

#### TRANSMISSION: FULLER, FRO-15210B

10-Speed, Ratios: 11.06 Low – 0.75 High  
Driveline: Meritor 176N w/Coated Splines

#### CAB: CA68 CONVENTIONAL

Air Conditioner w/Integral Heater – R134a Refrigerant  
Air Restriction Monitor, Graduated Lock Up Type  
Air Cleaner Intake Mounted  
Ash Tray  
Cab Mounting  
Four Point System w/2 Air Bags and Shocks at Rear  
Cigar Lighter  
Coat Hook (1)  
Cup Holders, Driver's & Rider's Side  
Dome Lights, 2 Lamps LH/ 2 Lamps RH  
Doors, Galvanized Steel w/Visibility Door  
Engine Shutoff – Key Type Control  
Floor Mats, Mack Signature Polyurethane  
Air Pressure Gauge – Primary & Secondary  
Voltmeter - Digital  
Gauge Cluster:  
Exhaust Pryometer and Transmission Oil  
Temperature Gauges  
Engine Coolant Temperature Gauge  
Engine Oil Pressure Gauge  
Fuel Level Gauge  
Speedometer, Electronic w/Trip Odometer  
Engine Tachometer Electronic w/Hourmeter  
Safety Tinted Windshield, Side and Rear Windows  
Grab Handles, Black Finish RH & LH Behind Door  
HeadLamp Bezel – Molded Plastic, Bright Finish  
Replaceable Bulbs  
Horn, Air Horn Single Tone Electronic

# MACK

## PINNACLE AXLE FORWARD 6X4 SERIES



- **Conventional Cab**
- **Front Axle Forward**
- **6-Wheel Tractor**
- **ABS (Anti-Lock Brake System)**

The MACK Pinnacle Axle Forward is for fleet owner and owner-operator alike, a total chassis optimized through computer-aided design for an excellent strength-to-weight ratio. The cab incorporates exceptional room and comfort with the highest standards of fit and finish. Available with or without one of the integrated sleepers with unified aerodynamics. Either way the cab ride is an innovative cab air suspension, with a sleeper subframe for unsurpassed smoothness and comfort. The quiet roomy interior caters to the driver's every need.

### STANDARD

**ENGINE:** MACK MP8-425E  
425 HP Peak Horsepower

**TRANSMISSION:** FULLER, FRO-15210B  
10-Speed

**FRONT AXLE:** MACK FXL12  
12,000 lb. Capacity

**REAR AXLE:** MERITOR RT40-145  
40,000 lb. Capacity  
Absorbers and Height Control Kit



**STANDARD SPECIFICATIONS**

(Continued)

**CAB: CA68 CONVENTIONAL (Continued)**

Identification and Clearance Lights (5)  
Instrument Cluster:  
    Segmented LCD Driver's Display  
Instrument Panel, Charcoal Gray  
Interior Trim: Genuine – Slate Gray  
Keys, 2 – Keyed at Random  
Low Air Pressure Indicator, Light and Buzzer  
Exterior Mirrors, Body Colored Aero Mirrors  
    w/Integrated Convex Mirror  
Parking Brake On Indicator Light  
Radio Accommodation Package  
    Includes: Antenna, Power Supply and 2 Speakers  
CB – 5 way Binding Post  
Seating:  
    Driver – Bostrom Talladega 915 Mid-Back Air Suspension  
    Rider – Mack Fixed Mid-Back Non-suspension  
Seat Belts, Lap and Shoulder w/Cab Mounted Shoulder Belt  
    w/Fixed D-Ring for Driver and Rider Seats  
Side Markers – Lamps and Reflectors  
Key Type Starter Switch  
Steering Column, Adjustable Tilt Telescope  
Steering Wheel, Two Spoke Urethane Grip Painted Spokes  
    and Bulldog Horn Cap  
Overhead Console, 3 Storage Compartments w/Nets  
Rear Storage Pouch  
Sun Visor, Interior Both Sides w/Ticket Holder  
Turn Signals, Integral w/Fender  
Window Control, Standard Hand Crank  
Windshield – 2 Piece  
Windshield Washers, Wiper Mounted w/Reservoir  
    Mounted under Hood  
Windshield Wipers:  
    2 Speed Electric Motor w/Intermittent Feature

**HOOD & FENDERS:**

One Piece Fiberglass  
SMC (Sheet Molding Compound)  
Grille, Bright Finish (Chrome) w/Black Background

**FRAME:**

Wheelbase (WB) – 178"  
Load Platform (LP) – 147"  
Cab to Axle (CA) – 90"  
Axle to End of Frame (AF) – 56"  
Frame Rails – Steel  
Cross Section – 10.47" x 3.54" x .24"  
Section Modulus, 11.6 in.<sup>3</sup>  
RBM (per rail) – 1,390,000 lb. in.  
Tapered and Flanged Rail Ends - 28°  
Bumper: Stainless Steel Clad Aluminum Flush Mounted  
Bumper to Back of Cab (BBC) – 116"  
Fifth Wheel: Fontaine SL3ASB Air Slide  
Front Towing, Clevis (2)

**FUEL TANKS:**

Capacity/Location: 93 Gallon LH & RH  
Unpainted Aluminum, 26" Diameter

**FRONT AXLE: MACK FXL12**

12,000 lb. Capacity  
Tires: 295/75R22.5 (Low Profile)  
Wheel Equipment: (2) 22.5x8.25 Alcoa 10-Hole Hub Piloted  
    Aluminum Disc, 11¼" Bolt Circle  
Brakes: Meritor "S" Cam 15"x 4" Q-Plus w/o Dust Shields  
Shock Absorbers  
Slack Adjusters – Automatic  
Suspension:  
    Mack Taperleaf 12,000 lb. Ground Load Rating  
    2 Leaf Spring  
Steering: HD94 Sheppard Integral Power Steering

**REAR AXLE: MERITOR RT40-145**

40,000 lb Capacity  
Carrier – Malleable Housing  
Suspension – Maxlite 40EZ 40,000 lb Capacity  
Tires: 295/75R22.5 (Low Profile)  
Wheel Equipment: (8) 22.5" x 8.25" Alcoa 10-Hole Hub Piloted,  
    Aluminum Disc, 11¼" Bolt Circle  
Brakes: Meritor "S" Cam 16.5" x 7" Q-Plus w/o Dust Shields  
Wheel Seals – Oil  
Slack Adjusters – Automatic  
Spring Brake Chambers:  
    (2) 30/30 Double Diaphragm Type  
    Mechanical Spring Release

**AIR/BRAKE:**

Dual Air Brake System  
Air Dryer – Meritor System Saver 1200P  
Air Reservoirs – Steel 596<sup>1</sup> in<sup>3</sup> Capacity  
    Single Compartment Primary and Two  
    Compartment Supply/Secondary  
Mack Road Stability Advantage System  
Brake Control – 2 Valve Dual Brake System  
    Trailer Supply and Tractor-Trailer Park  
Hand Control Valve for Trailer Brake  
Trailer Connection Package: Semi  
    (2) 12' Air Hoses w/Integral Glad Hand Electrical Plug Holder  
    Storage Bracket  
    (1) 12' Seven Wire Cord w/Seven Wire Plug on Each End  
    Ground Reachable, Breakaway Safety Valve  
    Conspicuity Treatment to Back of Cab

**ELECTRICAL:**

Battery Box – Steel w/Molded Plastic Cover  
    Mounted Forward of LH Fuel Tank  
Courtesy Light Switch – Headlamp and Clearance  
Daytime Running Lights  
Doubles Trailer Electrical Package  
Electric Circuit Protection Package  
Waterproof Electrical Connections  
Rear Lighting – (2) Combination Stop, Tail Directional and  
    Back-Up Lights  
Headlights, Halogen-Single Rectangular Replaceable Bulbs  
Transistorized Turn Signal Flasher

**PAINT:**

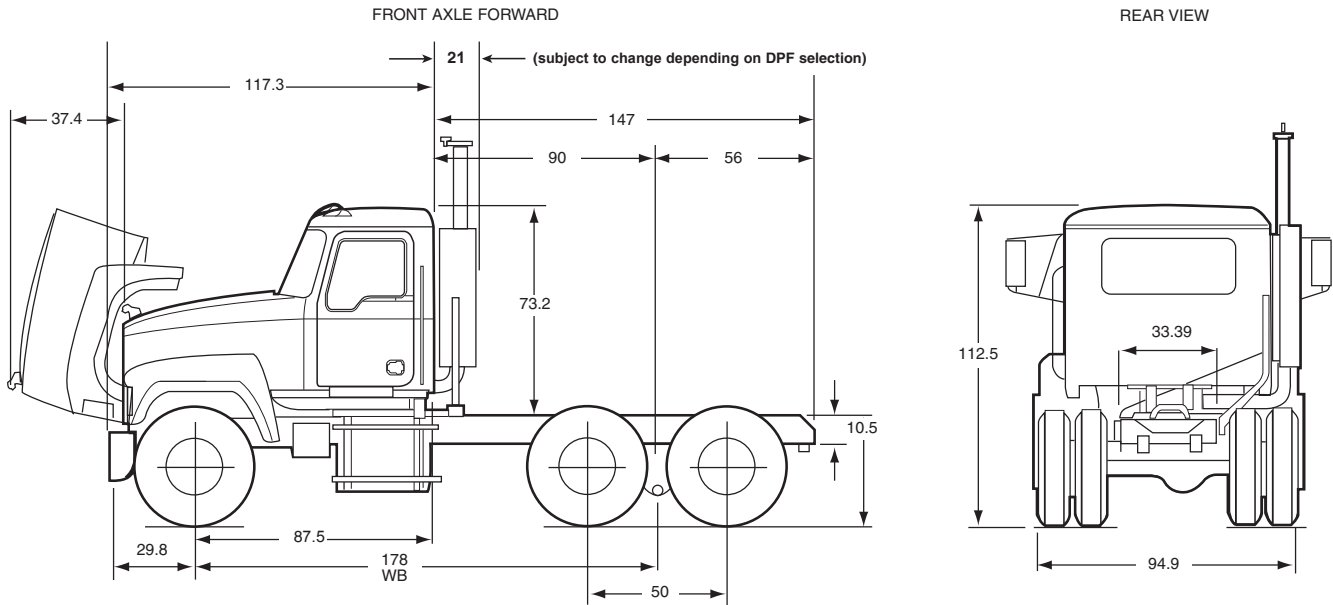
Cab, Hood and Fenders:  
    Mack White (High Gloss)  
    Urethane Base Coat w/o Clear Coat  
Chassis Running Gear:  
    Mack Black (Urethane)

**WEIGHT:**

Font: 7,814  
Rear: 7,228  
TOTAL: 15,042

## CHASSIS SPECIFICATIONS

(All measurements are in inches)



## AVAILABLE DRIVELINE COMPONENTS

MP8—ENGINES	
MODEL	HORSEPOWER
<b>MACK</b>	
MP8-425E	425 HP [317 kW] @ 1500-1800 RPM 425 HP [317 kW] @ 1800
MP8-455E	455 HP [339 kW] @ 1500-1800 RPM 455HP [339 kW] @ 1800
MP8-485E	485 HP [362 kW] @ 1500-1800 RPM 485 HP [362 kW] @ 1800
MP8-415C	415 HP [309 kW] @ 1500-1700 RPM 390 HP [291 kW] @ 1950
MP8-445C	445 HP [332 kW] @ 1500-1700 RPM 420 HP [314 kW] @ 1950
MP8-485C	485 HP [362 kW] @ 1500-1700 RPM 455 HP [339 kW] @ 1950

TRANSMISSIONS		
MODEL	SPEEDS	RATIOS (LOW/HIGH)
<b>MACK</b>		
T306G	6	7.50/0.71
T309	9	11.40/0.71
T309(LR)	9	13.93/0.71
T310	10	13.81/0.73
T310M	10	17.35/0.73
T310ME	10	17.35/0.73
T313	13	13.44/0.74
T313 LR	13	16.42/0.71
T318	18	13.44/0.71
T318LR	18	16.42/0.71
<b>ALLISON</b>		
4000-HS	5	3.51/0.74
4000-RDS	5	3.51/0.74
4000-HS	6	3.51/0.64
4000 RDS	6	3.51/0.64
<b>EATON FULLER</b>		
RTX-16709B	9	12.46/0.73
FRO-15210B	10	11.06/0.75
FRO-15210C	10	12.69/0.74
FRO-16210B	10	11.06/0.75
FRO-16210C	10	12.69/0.74
RTO-16908LL	10	14.56/0.74
RTO-16910B-AS3	10	10.69/0.74
RTO-16910B-DM3	10	10.96/0.74
RTO-16910C-AS3	10	12.80/0.73
RTLO-16913A	13	12.31/0.73
RTO-16915	15	13.31/0.79
RTLO-16918A-AS3	18	14.40/0.73
RTLO-16918B	18	14.40/0.73

AXLES		
CAPACITY	MAKE	MODEL
<b>FRONT AXLES</b>		
12,000 lb. [5 443 kg]	MACK	FXL12
	DANA SPICER	E1202I-LMS
	MERITOR	FF961
14,600 lb [6 623 kg]	MACK	FXL 14.6
	MERITOR	FG941
<b>TANDEM REAR AXLES/SUSPENSION</b>		
38,000 LB. [17 237 kg]	MACK	S38R
40,000 lb. [18 144 kg]	MACK	S40
	DANA SPICER	DS405(P) DST40(P)/41(P)
	MERITOR	RT40-145(A)
44,000 lb. [19 958 kg]	MACK	S440
46,000 lb. [20 866 kg]	MACK	S440-46/462
	MERITOR	RT46-160 RT46-164EH

## OPTIONAL EQUIPMENT

### FRAME:

Rail Dimensions: 10.47" x 3.54" x .28"  
 Section Modulus: 13.3 in.<sup>3</sup>  
 Resistance Bending Moment (RBM) 1,600,000 lbs. in.

Rail Dimensions: 10.47" x 3.54" x .32"  
 Section Modulus: 15.0 in.<sup>3</sup>  
 Resistance Bending Moment (RBM) 1,810,000 lbs. in.

Rail Dimensions: 11.81" x 3.54" x .37"  
 Section Modulus: 20.6 in.<sup>3</sup>  
 Resistance Bending Moment (RBM) 2,470,000 lbs. in.

**Wheelbase Availability:** 166" to 247"

### CAB, OPTIONAL INTERIOR TRIM LEVELS:

Trim Level II – Custom: Refer to MackTraQ for complete description  
 Trim Level III – Grand Touring: Refer to MackTraQ for complete description

### SLEEPER BOXES: Interior Color Matches that of the Cab Interior

- 48" Flat Top
- 56" Flat Top
- 60" Mid Rise
- 70" Mid Rise
- 70" High Rise

### AERO AIDS:

- Roof Fairings
- Side Shields

### OTHER OPTIONAL EQUIPMENT:

- |   |  |  |
|---|--|--|
| <ul style="list-style-type: none"> <li>ABS Options</li> <li>Aerodynamic Aids</li> <li>Air Dryer Options</li> <li>Air Horns</li> <li>Air Reservoir, Aluminum</li> <li>Alternator Options</li> <li>Back of Cab Reflectors</li> <li>Back-Up Alarm</li> <li>Batter Box Cover, Aluminum</li> <li>Battery Disconnect Switch</li> <li>Battery Options</li> <li>Brake Equipment Options</li> <li>Bright Finish Exhaust</li> <li>Bright Finish Fuel Tanks</li> <li>Bug Screen</li> <li>Cab Window Options</li> <li>CB Radio Options</li> <li>Coolant Protection</li> <li>Co-Pilot Driver Information Display</li> <li>Crossmember Options</li> <li>Dash Mounted Switches</li> <li>Door Interior Trim Panels</li> <li>Dual Exhaust</li> <li>Engine Block Heater</li> <li>Engine Starting Aid</li> </ul> | <ul style="list-style-type: none"> <li>Fifth Wheel &amp; Related Equipment</li> <li>Fire Extinguisher</li> <li>Fog Lights</li> <li>Fuel Heater</li> <li>Gauge Cluster Options</li> <li>Hood Insulation</li> <li>Hubodometer</li> <li>Identification/Clearance Lights</li> <li>In-Dash Storage</li> <li>Instrument Panel Trim</li> <li>Keyed Alike Chassis</li> <li>Keyless Entry</li> <li>Metric Gauges</li> <li>Mirror Options</li> <li>Mud Flaps</li> <li>Overhead Console, 2 Compartments</li> <li>Permit Plates</li> <li>Personalized Name Plate</li> <li>Power Windows &amp; Locks</li> <li>Push Button Start</li> <li>Quarter Fenders</li> <li>Reflector Kit</li> <li>Seat Options, Driver &amp; Rider</li> <li>Side Shield Extensions</li> <li>Sliding Rear Window</li> </ul> | <ul style="list-style-type: none"> <li>Starter Option</li> <li>Steering Wheel Options</li> <li>Stereo Radio Options</li> <li>Storage Console</li> <li>Sun Visor, Exterior</li> <li>Synthetic Lubricants</li> <li>Trailer Hook-Up Lamp</li> <li>Wheel Equipment Options</li> <li>Wheel Lugwrench</li> <li>Windshield Curtain</li> </ul> |
|---|--|--|