

STANDARD SPECIFICATIONS

(Based on Model MR690P 4x2 Truck)

ENGINE: MACK, AMI-300 ASET

Horsepower, 300 HP [224 kW] at 2100 Gov. RPM
Peak Horsepower, 325 HP [243 kW] at 1700-1900 RPM
Max. Torque, 1200 lb/ft [1 627 N•m] at 1300 RPM
V-MAC III—Total Vehicle Electronics
Lube Oil System, Full Flow ESI
Centri-Max® Ultra Centrifugal Oil Filter
Flywheel Housing, Aluminum
Silicone Hoses and Tubing on Engine
Air Compressor, 13.2 (TF 550) cfm min. rtg.
Starting System Starter, 12-Volt
Batteries, (3) Mack 12-Volt M/F Type, 1950 CCA each
Alternator, 12V 100A, Delco (22 SI)
Air Intake System
Air Cleaner, 13" [330 mm] Single Element
Dry Type, Behind Cab
Snorkel
Air Restriction Monitor, Grad. Lock Up Type
(Air Intake Mtd.)
Exhaust, Vertical w/Rain Cap
Cooling System—Shutterless Type
Radiator, 1,050 sq in [6 775 cm²] Frontal Area
Anti-Freeze to -10°F [-23°C]
Fan Drive, On-Off
Poly-V Fan Belt with Automatic Tensioner

CLUTCH: EATON FULLER, CL7981

15.5" [394 mm] Ceramic Dampened Disc,
2-Plate, Coaxial Spring

TRANSMISSION: MACK, TM-308

6-Speed, Ratios: 17.77 Low–0.71 High
PTO Side Gears (RH & LH)
Driveline: Meritor 17N HD w/Coated Splines

CAB: CA531, LOW COE

Interior Features:

Basic: Color: Same as Exterior Paint

Ash Tray
Cigar Lighter
CB—5-way Binding Post
Coat Hook
Glove Box
Heater with Integral Defroster
Dome Light w/Self-Contained Switch
Fixed Steering Column

Seats:

Driver's, Bostrom Talladegha 905,
Air Susp. (Mid-Back)
Rider's, Fixed MACK Non-Suspension (Mid-Back)
Seat Belts—Driver's and Rider's
Lap & Shoulder w/Seat Belt Retractor
Sun Visor—LH & RH
Floor Mats, Rubber w/Closed Cell Vinyl Nitrile Backing

Interior Features: Operational

T.M.C. Recommended Instrument Panel
Air Pressure Gauge—Dual
Voltmeter
Fuel Level Gauge
Engine Oil Pressure Gauge

MACK

MR600P SERIES

CHASSIS



- Low COE 4-Wheel Truck
- Maneuverability
- Panoramic View
- Tight Wheel Cuts

The low-profile cabover "MR" was created specifically for the severe service refuse industry, however, it is also popular in other applications such as concrete pumper, mixer/dumper and other construction equipment. Its short bumper back-to-back of cab dimension and set-back front axle permit effective weight distribution for on and off-road hauling. The steel cab is fully galvanized. The fiberglass doors and huge glass areas contribute to easy entry/exit and panoramic visibility. The "MR" is literally designed around the task.

STANDARD

ENGINE: MACK AMI-300 ASET
325 HP [243 kW] Peak Horsepower

TRANSMISSION: MACK TM-308
8-Speed

FRONT AXLE: MACK FAW12
12,000 lb. [5 443 kg] Capacity

REAR AXLE: MACK RA23R
23,000 lb. [10 433 kg] Capacity
Suspension: Multileaf Springs



Mack Trucks, Inc., Allentown, Pennsylvania

STANDARD SPECIFICATIONS

(Continued)

CAB: continued

Interior Features: Operational (continued)
Engine Coolant Temperature Gauge
Low Air Pressure Indicator (Light and Buzzer)
Speedometer/Trip Odometer, Electronic
Tachometer w/Hourmeter, Electronic
High Beam Indicator
Parking Brake On Indicator
Key Type Starting
Engine Shutoff, Key-Type Control
Directional Signal Switch, Manual Cancelling

Exterior Features:
Welded Steel Shell, Galvanized
MACK Rust Preventative Procedures
Composite Fenders for Chassis & Cab Section
Safety Glass Windows
Tinted Windshield
Windshield Corner Wind Deflectors
Windshield Wipers—Two, Pantograph Type
Bottom Mounted
Wiper Motor (Electric), (2), Two Speed
Windshield Washers, Electric, Wiper Mtd. With
7 qt. [6.6 L] Reservoir
Mirrors, West Coast Bulldog Bright Finish,
w/Stainless Bracing, RH & LH
Headlamps—(2) Conventional Sealed Beam Type
(7" [178 mm] Round)
Daytime Running Lights
Identification and Clearance Lamps (7)
Side Markers—Lamps and Reflectors
Front Turn Signals
Transistorized Flasher
Horns, Air, MACK Twin Trumpet Mtd. Under Cab &
Electric, (Single Tone)
Doors—Fiberglass with:
Sliding Type Windows (Non-Tinted)
Screened Vent in LH Door
Peep Window in RH Door
Grab Handles (Aluminum), RH & LH Behind Door
Rear Cab Glass (Non-Tinted)
Cab Mounting and Lift: Mounting 4-Point Fixed Type

HOOD & FENDERS:

Hydraulic Cab Lift, 60° Cab Tilt, Pump Mtd. on RH Fender
12" [305 mm] Mud Flaps Mtd. on Front Fender

FRAME:

WB—Wheelbase—157" [3 988 mm]
LP—Load Platform—249" [6 325 mm]
CA—Cab to Axle—153.5" [3 899 mm]
AF—C/L Axles to End of Frame—95.5" [2 462 mm]
Frame Rails—Steel
Cross Section—13.25" x 3.25" x .3125" [337 x 83 x 8 mm]
Section Modulus—19.79 in³ [324.3 cm³]
RBM (per rail)—2,180,000 lb in [246 000 N•m]
Bumper: Steel, Swept Back Channel, 92.6" x 11.25"
[2 352 x 286 mm]
Extended Mounting
BBC—Bumper to Back of Cab—63" [1 600 mm]
Towing: Pin

FUEL TANKS:

Steel, 24" [610 mm] Dia.
Capacity/Location, 70 gal [265 L] RH

FRONT AXLE: MACK, FAW12

12,000 lb [5 443 kg] Capacity
Brakes, "S" Cam 16.5" x 5" [419 x 127 mm]
Meritor "Q-Plus" Brakes w/o Dust Shields
Slack Adjusters—Automatic
Suspension, MACK Multileaf Spring with 12,000 lb
[5 443 kg] Ground Load Rating
Integral Power Steering Ratio 16.6:1
Wheel Equipment, 22.5" x 8.25" Accuride 10 Hole, 11.25"
Bolt Circle, Hub Piloted Steel Disc Wheels
Wheel Seals—Oil
Tires: 11R22.5 (singles)

REAR AXLE: MACK, RA23R

23,000 lb [10 433 kg] Capacity Axle
Carrier—Malleable—CRD203
Suspension—Mack 23,000 lb [10 433 kg] Capacity
Multileaf Springs
Brakes—"S" Cam 16.5" x 7" [419 x 178 mm]
Meritor "Q-Plus" Brakes w/o Dust Shields
Slack Adjusters—Automatic
Aux. Spring Brake Chambers,
30/30 Double Diaphragm Type,
Mechanical Spring Release; 2 Units,
Wheel Equipment, 22.5" x 8.25" Accuride 10 Hole, 11.25"
Bolt Circle, Hub Piloted Steel Disc Wheels
Wheel Seals—Oil
Tires: 11R22.5 (duals)

AIR/BRAKE:

ABS (Anti-Lock Brake System)
Dual Air Brake System
Air Dryer—Heated
Air Reservoirs—
Two, One Supply Tank and One Dual Tank Compartment
Primary/Secondary Tank Mounted Behind
Battery Box, Outboard LH Frame Rail
Capacity—3,623 in³ [59.4 L]

ELECTRICAL:

Painted Steel Battery Boxes & Covers
Chassis Electrical
Negative Ground
12-Volt Electrical Circuits and Bulbs
Fuse Protected Circuits
Breaker Protected Headlamp & Windshield Wiper Circuits
Rear Lighting, (2) Combination Stop, Tail Directional &
Back-up Lights

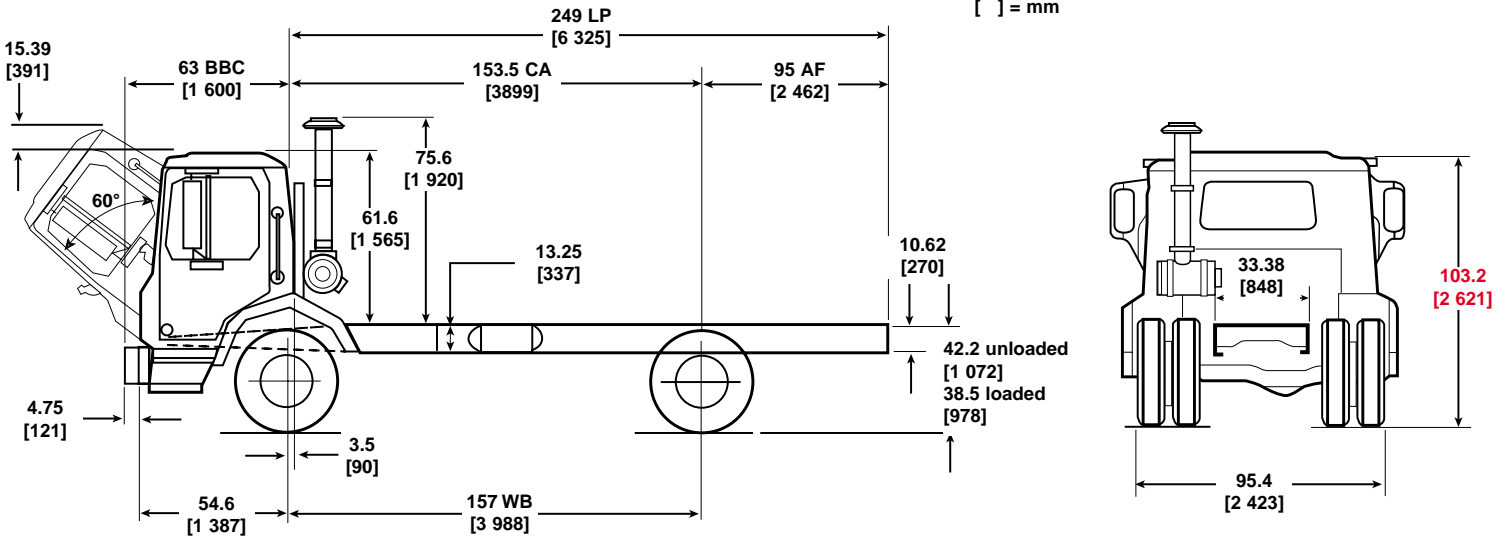
PAINT:

Cab, Hood and Fenders
Color: MACK White, High Gloss
Chassis Running Gear
Color: MACK Black (Urethane)

WEIGHT:

Front: 10,063
Rear: 3,719
TOTAL: 13,782

CHASSIS SPECIFICATIONS



AVAILABLE DRIVELINE COMPONENTS

TRANSMISSIONS		
MODEL	SPEEDS	RATIOS (LOW/HIGH)
MACK		
TM308	8	17.77/0.71
TM308M	8	17.77/0.71
TM309	9	25.21/0.71
TM309M	9	25.21/0.71
T309	9	11.40/0.71
T309(L)	9	13.93/0.71
T309(LR)	9	13.93/0.71
T310M	10	17.35/0.73
T310ME	10	17.35/0.73
T310MLR	10	27.31/0.71
ALLISON		
4500 RDS	5	4.70/0.76
4500 RDS	6	4.70/0.67
4000 RDS	5	3.51/0.74
4000 RDS	6	3.51/0.64
4500 RDS R	5	4.70/0.76
4500 RDS R	6	4.70/0.67
4000 RDS R	5	3.51/0.74
4000 RDS R	6	3.51/0.64
ALLISON—FOR FIRE PUMPER SERVICE		
4000 EVS	5	3.51/0.74
4000 EVS	6	3.51/0.64

ENGINES	
MODEL	*HORSEPOWER @ GOV'D. RPM
MACK	
AMI-300 ASET IEGR	300 HP [224 kW] @ 2100 <i>325 HP [243 kW] @ 1700-1900</i>
AI-300A ASET IEGR	300 HP [224 kW] @ 1950 <i>325 HP [243 kW] @ 1700</i>
AMI-335 ASET IEGR	335 HP [250 kW] @ 2100 <i>365 HP [272 kW] @ 1700-1900</i>
AMI-370 ASET IEGR	370 HP [276 kW] @ 2100 <i>405 HP [302 kW] @ 1700-1900</i>
AI-350 ASET IEGR	350 HP [261 kW] @ 1950 <i>350 HP [261 kW] @ 1600-1950</i>
AI-400 ASET IEGR	400 HP [298 kW] @ 1950 <i>400 HP [298 kW] @ 1600-1950</i>

*Italics = Peak horsepower other than gov'd. RPM

AXLES		
CAPACITY	MAKE	MODEL
FRONT AXLES		
12,000 lb. [5 443 kg]	MACK	FAW12
14,330 lb. [6 486 kg]	MACK	FAW14.3
14,600 lb. [6 623 kg]	MERITOR	FG941
18,000 lb. [8 165 kg]	MACK	FAW18
20,000 lb. [9 072 kg]	MACK	FAW20
SINGLE REAR AXLES		
23,000 lb. [10 433 kg]	MACK	RA23R
	MERITOR	RS23-186
30,000 lb. [13 608 kg]	MERITOR	RS30-185
	DANA SPICER	30105S/30055P

OPTIONAL EQUIPMENT

FRAME:

OPTIONAL: 13.37" [340 mm] x 3.25" [83 mm] x .375" [10 mm]
RBM—2,580,000 lb. in. [292 000 N•m]
Section Modulus—23.49 in.³ [385 000 mm³]

w/Reinforcement:

9.93" [252 mm] x 2.87" [73 mm] x .25" [6 mm]
RBM—3,240,000 lb. in. [366 000 N•m] (Combined Main Frame & Reinforcement)
Section Modulus—29.42 in.³ [482 000 mm³]

Wheelbase Availability: **MR600P** 4 x 2 Chassis 122" [3 099 mm] to 255" [6 477 mm]

OTHER OPTIONAL EQUIPMENT:

Air Conditioner, Integral Comb Unit
Air Dryers
Air System, Increased Volume
Alcohol Evaporation
All Hose Chassis
Aluminum Air Reserves
Back-up Alarm
Battery Disconnect Switch
Body Power Cable
Bright Finish Equipment:
Battery Box Covers
Bumper
Vertical Exhaust Systems
Front Wheel Nuts
Grille
Mirrors
Bumper Options
Cab Windshield Protector includes Anti-Skid
Roof Surface
Courtesy Light Switch
Crossmembers, I-Beam Type or
1/2" [13 mm] Plate Type
Engine Brake
Engine Cold Starting Aids
Engine Heaters
Engine Protection Shutdown System
Exhaust, Vertical or Underframe
Flasher, Transistorized
1/4" Inside Frame Reinforcement

Fog and Driving Lamps
Frame Extension, Front
10" for Refuse Service
Fuel Heaters/Water Separators
Gauge Cluster Options:
Air Restriction
Ammeter
Axle Oil Temperature
Engine Hourmeter
Engine Oil Temperature
Exhaust Pyrometer
Fuel Pressure
Manifold Pressure
Transmission Oil Temperature
Hand Control Valve
Hubodometer
Interwheel Power Divider
Mirror Options
Mud Flaps
Paint—Special Paint Designs
Power Divider Lockout
Power Take-Off Options:
Front End PTO (Crankshaft Adapter)
Lift Axle Mtg. Clearances
Radio Options, Stereo/Cassette
Seat Options, Driver & Rider
Semi or Full Trailer Connections Package

Engine Skid Plate
Sliding Rear Window
Static Load Cushions, Front Axle
Synthetic Lubricants
Tandem Axle Spacing Options
Trailer Hook-up Lamp
Waterproof Electrical Connections
Wheel Equipment:
Spoke, Steel or Aluminum Disc
Windows—Door, Roll-up or Sliding

OTHER COMPONENT OPTIONS
MAY BE AVAILABLE UPON REQUEST