

STANDARD SPECIFICATIONS

(Based on Model CL713, 6x4 Tractor)
Canadian orders require Engine Block Heaters.

ENGINE: CUMMINS ISX 500 EPA02

Horsepower, 500 HP [373 kW] at 2000 Gov. RPM
Peak Horsepower, 500 HP [373 kW] at 2000 RPM
Max. Torque, 1650 lb/ft [2 657 N•m] at 1200 RPM
V-MAC III—Total Vehicle Electronics
Lube Oil System, Full Flow ESI +
Extended Service Interval 25,000 Miles [40 233 km] Centri-Max®
Centrifugal Oil Filter
Flywheel Housing, Aluminum
Silicone Hoses and Tubing on Engine
Air Compressor, 14.0 cfm min. rtg. w/Air Governor
Chassis Mounted
Starting System Starter, 12-Volt
Batteries, (3) Mack 12-Volt M/F Type, 750 CCA
Total 2250 CCA with Kalas Cables
Alternator, 12V 100A, Delco (22 SI)
Air Intake System
Air Cleaner, 11" [279 mm] Single Element
Dry Type, Under Hood
Air Intake from Both Sides of Hood
Air Restriction Monitor, Grad. Lock Up Type (Air Intake Mtd.)
Dual Exhaust, Vertical w/Muffler Heat Shield
Cooling System—Shutterless Type
Radiator, 1,334 sq in [8 605 cm²] Frontal Area
Anti-Freeze to -10°F [-23°C]
Fan Drive, On/Off
Poly-V Fan Belt

CLUTCH: EATON FULLER, CL7985

15.5" [394 mm] Ceramic Dampened Disc, 2-Plate, Coaxial Spring

TRANSMISSION: MACK T-310M

Ratios: 17.35 Low-0.73 High
Driveline: Meritor 176N HD Main & Meritor 17N HD Interaxle
w/Coated Splines

CAB: MACK CONVENTIONAL, CA67

Interior Features:

Basic: Contractor

Color: To be same as Exterior
Ash Tray
Cigar Lighter
CB—5-way Binding Post
Radio Accommodation Package
Coat Hook
Dispatch Box Mounted on Rear Panel
Overhead Console Including:
Location for Opt. Radio
Bergstrom Blend Air HVAC with R134a Refrigerant
Dome Light w/Self-Contained Switch
Adjustable Steering Column—Tilt Only
18" Steering Wheel, Two Spoke

Seats:

Driver's, Bostrom Talladega 915, Air Susp.
(Mid-Back)
Rider's Seat
Seat Belts—Driver and Rider
Lap & Shoulder w/Seat Belt Retractor
Sun Visor—Both Side
Floor Mats, Rubber w/Closed Cell Vinyl Nitrile Backing

MACK

CL703 SERIES

CHASSIS



- Conventional Chassis
- Set-Back Front Axle
- 6-Wheel Tractor
- ABS (Anti-Lock Brake System)

The CL chassis is an axle-back conventional configuration revealing the modern appearance of today. Equipped with an exceptional roomy cab and offered with integrated sleepers and various aerodynamic components. The CL703 is suited for either highway or on-off highway service offering the choice of MACK's "Balanced Design" engine, transmission and rear carriers as well as offering components from other manufacturers. Either way the CL703 is designed to get the job done in comfort and style.

STANDARD

ENGINE: CUMMINS ISX 500 EPA02
500 HP [373 kW] Peak Horsepower

TRANSMISSION: MACK 310M
10-Speed, Overgear

FRONT AXLE: MACK FAW16
16,000 lb. [7 258 kg] Capacity

REAR AXLE: MACK SAL38R
38,000 lb. [17 237 kg] Capacity
Suspension: Air, MACK AL401



STANDARD SPECIFICATIONS

(Continued)

CAB: (continued)

Interior Features: Operational

T.M.C. Recommended Instrument Panel
Air Pressure Gauge
Voltmeter
Fuel Level Gauge
Engine Oil Pressure Gauge
Engine Coolant Temperature Gauge
Low Air Pressure Indicator (Light and Buzzer)
Speedometer/Trip Odometer, Electronic
Tachometer w/Hourmeter, Electronic
High Beam Indicator
Parking Brake On Indicator
Key Type Starting
Engine Shutoff, Key-Type Control
Courtesy Light Switch (Head & Clearance)
Directional Signal

Exterior Features:

Welded Steel Shell, Galvanized
MACK Rust Preventative Procedures
Vents (Screened)
Fresh Air Inlet for Heater
Cab Step RH—Two Step Aluminum Frame Mounted
Safety Glass Windows
Tinted Windshields, Side & Rear Glass
Windshield Wipers—Two, Fixed Arm & Blade Type
Wiper Motor (Electric), (1), Two Speed Intermittent
Windshield Washers, Electric, Wiper Mtd. with
5 qt. [4.7 L] Reservoir
Mirrors, West Coast Bulldog Bright Finish, Includes
8" Convex RH & LH w/Stainless Steel Arms &
Brackets
Headlamps—Halogen, 7" [178 mm] Round
Daytime Running Lights
Identification and Clearance Lamps (5)
Side Markers—Lamps and Reflectors
Front Turn Signals
Transistorized Flasher
Horns, Air, MACK Rectangular Single Trumpet &
Electric, (Single Tone)
Doors—Galvanized Steel with:
Visibility Door with Roll-Up Tinted Windows
Grab Handles (Stainless Steel), RH & LH Behind Door
Cab Mounting: Trunnion Front, Air Suspended Rear

HOOD & FENDERS: FIBERGLASS

One Piece Fiberglass with Wheel Splash Aprons
Tilts Forward 78° with Spring Assist
Grille—Hood Mounted Bright Finish

FRAME:

WB—Wheelbase—174" [4 420 mm]
LP—Load Platform—157" [3 988 mm]
CA—Cab to Axle—100" [2 540 mm]
AF—C/L Axles to End of Frame—57" [1 448 mm]
Frame Rails—Steel—45° Rear Frame Rail Cutoff
Cross Section—13.5" x 3.4" x .39" [342 x 86 x 10 mm]
Section Modulus—25.2 in.³ [413 cm³]
RBM (per rail)—3,024,000 lb. in. [341 400 N•m]
Crossmembers—Back to Back "C" Channel
Bumper: Non-Metallic Flexible (Argent Color) Flush Mounted
BBC—Bumper to Back of Cab—123.2" [3 129 mm]
Towing: Clevis (2)

FUEL TANKS:

Aluminum, 25" [640 mm] Dia.
Capacity/Location, 95 gal [360 L] LH & RH

FRONT AXLE: MACK FAW16

16,000 lb [7 258 kg] Capacity
Brakes, "S" Cam 16.5" x 6" [419 x 152 mm] Meritor "Q-Plus"
Brakes w/o Dust Shields
Slack Adjusters—Automatic
Suspension, MACK Taperleaf Spring with 12,000 lb [5 443 kg]
Ground Load Rating
Shock Absorbers
Integral Power Steering (Master and Slave)
Wheel Equipment, 22.5" x 8.25" Accuride 10 Hole, 11.25"
Bolt Circle, Hub Piloted Steel Disc Wheels
Wheel Seals—Oil
Tires: 295/75R22.5 (singles)

REAR AXLE: MACK SAL38R

38,000 lb [17 237 kg] Capacity Axle
Carrier—Malleable—CRDPC202/203
Suspension—Mack 40,000 lb [18 100 kg] Capacity
AL401 Air Suspension w/4 Shock Absorbers and
Height Control Kit
52" [1 321 mm] Axle Wheelbase
Brakes—"S" Cam 16.5" x 7" [419 x 178 mm]
Meritor "Q-Plus" Brakes w/o Dust Shields
Slack Adjusters—Automatic
Aux. Spring Brake Chambers,
30/30 Double Diaphragm Type, Mechanical Spring
Release; 2 Units
Wheel Equipment, 22.5" x 8.25" Accuride 10 Hole, 11.25"
Bolt Circle, Hub Piloted Steel Disc Wheels
Wheel Seals—Oil
Tires: 295/75R22.5 (duals)

AIR/BRAKE:

ABS (Anti-Lock Brake System)
Dual Air Brake System
Air Reservoirs Mounted below Battery Boxes
Primary—Single Compartment, Air Reservoir—LH Side
Supply/Secondary—Two Compartment, Air Reservoir—RH Side
Capacity—4,636 in³ [76 L]
Air Dryer—Heated
Semi-Trailer Connection Package
Air Brake Grouping
Chassis Mtd. Pogo Stick
12-ft Air Hose (2)
Glad Hand (2)
Glad Hand Storage Bracket
(B.O.C.—LH Ground Reachable)
Breakaway Safety Valve
Hand Control Valve for Trailer Brakes
Electric Grouping
12-ft (7-Wire) Cord
7-Wire Plugs

ELECTRICAL:

(2) Steel Battery Box with Unpainted Aluminum Cover Mtd.
Forward of LH & RH Fuel Tanks
Chassis Electrical
Negative Ground
12-Volt Electrical Circuits and Bulbs
Fuse Protected Circuits
Breaker Protected Headlamp & Windshield Wiper Circuits
Rear Lighting, (2) Combination Stop, Tail Directional &
Back-up Lights
Trailer Electrical Package for Doubles Operation

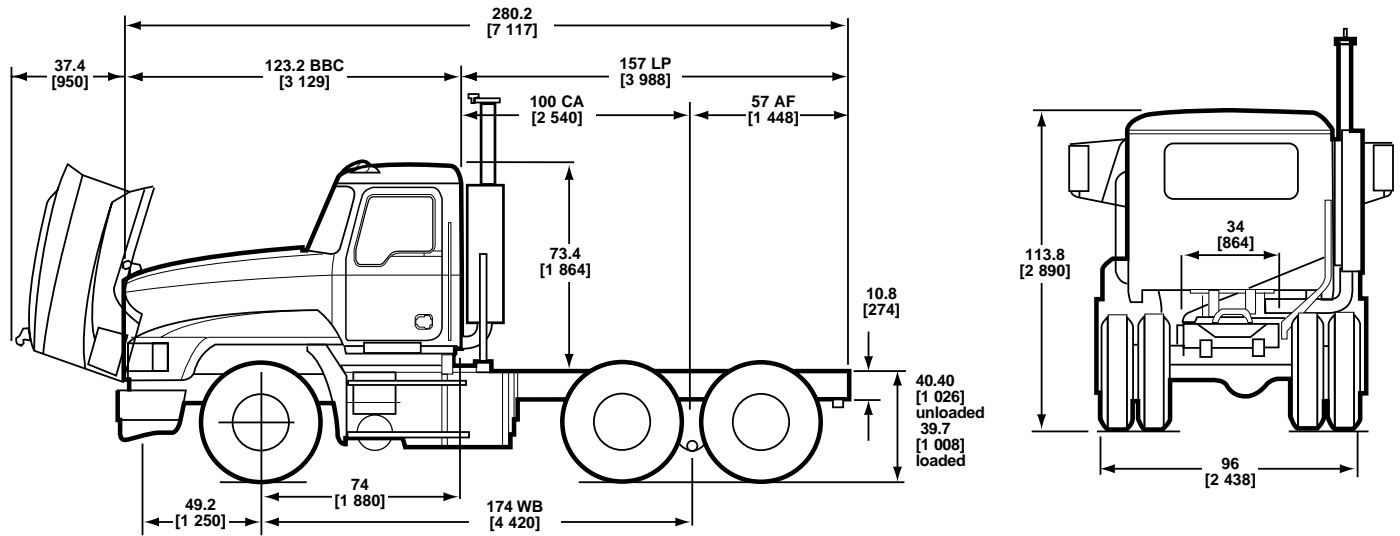
PAINT:

Cab, Hood and Fenders
Color: MACK White, High Gloss
Chassis Running Gear
Color: MACK Black (Urethane)

WEIGHT:

Front: 9,692
Rear: 6,480
TOTAL: 16,172

CHASSIS SPECIFICATIONS



AVAILABLE DRIVELINE COMPONENTS

TRANSMISSIONS		
MODEL	SPEEDS	RATIOS (LOW/HIGH)
MACK		
T310M	10	17.35/0.73
T310ME	10	17.35/0.73
T310ML	10	27.31/0.71
T313 L	13	16.42/0.71
T313LR	13	16.42/0.71
T318L	18	16.42/0.71
T318LR	18	16.42/0.71
FULLER		
RTXF-16709B	9	12.46/0.73
RTXF-16709H	9	
FROF-16210B	10	11.06/0.75
RTOF-16908LL	10	14.56/0.74
FROF-16210C	10	12.69/0.74
RTLOF-16913A	13	12.31/0.73
RTOF-16915	15	13.29/0.79
RTLOF-16918B	18	14.40/0.73
FROF17210C	10	12.94/0.74
FROF18210C	10	12.94/0.74
RTLOF18913A	13	12.31/0.73
RTLOF18918B	18	14.40/0.73
RTLOF20918B	18	14.40/0.73

AUXILIARY TRANSMISSIONS		
MODEL	SPEEDS	RATIOS (LOW/HIGH)
FULLER		
AT1202A(Air Shift)	2	2.036/1.00
SPICER		
ATO-1000-4C (Manual Shift w/Power Tower)	4	2.37/0.812
AMO-1000-4C (Manual Shift)	4	2.37/0.812

ENGINES		
MODEL		
CUMMINS		
ISX 565 @ 1850 ft.lb. EPA02		
ISX 530 @ 1850 ft.lb. EPA02		
ISX 500 @ 1650 ft.lb. EPA02		
ISX 500 @ 1850 ft.lb. EPA02		
ISX 500 @ 1650/1850 ft.lb. (Smart Torque) EPA02		

AXLES		
CAPACITY	MAKE	MODEL
FRONT AXLES		
14,600 lb [6 622 kg]	MERITOR	FG943
16,000 lb [7 258 kg]	MACK	FAW 16
20,000 lb. [9 072 kg.]	MACK	FAW 20
TANDEM REAR AXLES/SUSPENSION		
34,000 lb. [15 422 kg]	MACK	S34R
38,000 LB. [17 237 kg]	MACK	S38R SB38R
	MACK	SB38R
	DANA SPICER	DS405(P)
40,000 lb. [18 414 kg]	MERITOR	RT40-145
	MACK	S440
44,000 lb. [19 9568 kg]	MACK	S462
	DANA SPICER	DS462P
	MERITOR	RT46-160/ RT46-164EH/ 46-16HEH
50,000 lb. [22 680 kg]	MACK	S501
58,000 lb. [26 309 kg]	MACK	S582
65,000 lb. [29 484 kg]	MACK	S652

OPTIONAL EQUIPMENT

FRAME:

Standard Frame w/ Optional Reinforcement

.24 [6 mm] Steel Inside Channel Reinforcement
Section Modulus: 30.90 in.³ [285 cm³]
Resisting Bending Moment, RBM: 4,184,400 lbs. in. [472 300 N•m]

Wheelbase Availability

169" [4 280 mm] to 281" [7 137 mm]

CAB, INTERIOR TRIM LEVELS:

“**Contractor**”: For complete description, refer to Price Book or MackTraq
“**Custom**”: For complete description, refer to Price Book or MackTraq
“**Premier**”: For complete description, refer to Price Book or MackTraq

AERO AIDS:

Roof Fairing
Side Shields

OTHER OPTIONAL EQUIPMENT:

Air Compressor Options
Air Dryer Options
Air Horns
Air Reservoirs, Aluminum
Anti-Sway Rear Springs
Auxiliary Transmission
Back-Up Alarm
Battery Options
Battery Box Cover, Aluminum
Battery Disconnect Switch
Brake Equipment Options
Bright Finish Equipment:
 Air Reservoirs
 Battery Box Cover
 Bumper
 Exhaust Systems
 Fuel Tanks
 Mirrors and Brackets
 Steps
 Wheels, Disc
 Wheel Nuts
Bug Screen
Bumper Options
CB Radio Options
Cab Accessories
Cellular Phone
Chassis Keyed Alike
Clutch, Self-Adjusting
Coolant Protection to -40°F
Crossmember Options
Drain Valve, Automatic
Driveline, Increased Size
Dust Proofing
Electrical Circuit Breakers

Electrical Connections, Waterproofed
Electrical:
 Starter Options
 Alternator Options
Engine Brake
Engine Cold Starting Aids
Engine Heaters
Exhaust, Dual Vertical
Fifth Wheels and Related Equipment
Fog/Driving Lights
Frame Rail Clearances
Fuel Heaters
Fuel System, Dual Draw
Fuel/Water Separators
Gauge Cluster Options
Headlamp Options
Hubodometer
Increased Air Capacity
Interwheel Power Divider
Inversion Valve, Spring Brakes
Mirror Options
Paint Designs (Cab & Hood)
Power Divider Lockout
Power Take-Off Options & Clearances
Power Windows and Door Locks
Radio Options, Stereo/Cassette/CD
Rear Axle Carrier Options
Seat Options, Driver & Rider
Sliding Rear Window
Sun Visor Exterior
Suspension, Rear Axle: Air, Multileaf,
 or Hendrickson
Synthetic Lubricants
Tandem Axle Optional Spacing

Tires
Tow Hooks, Rear
Trailer Access Packages
Trailer Connection Packages &
 Accessory Options
Trailer Hook-Up Lamp
Transistorized Flashers
Transmission Cooler
Trunnion Bushing Options
Vinyl Stripe Designs (Cab & Hood)
Windshield Wipers
Wheel Equipment:
 Spoke, Steel or Aluminum Disc
 Hub & Drum Equipment
Wheel Flaps
Wheel Seals

**OTHER COMPONENT OPTIONS
MAY BE AVAILABLE UPON REQUEST.**