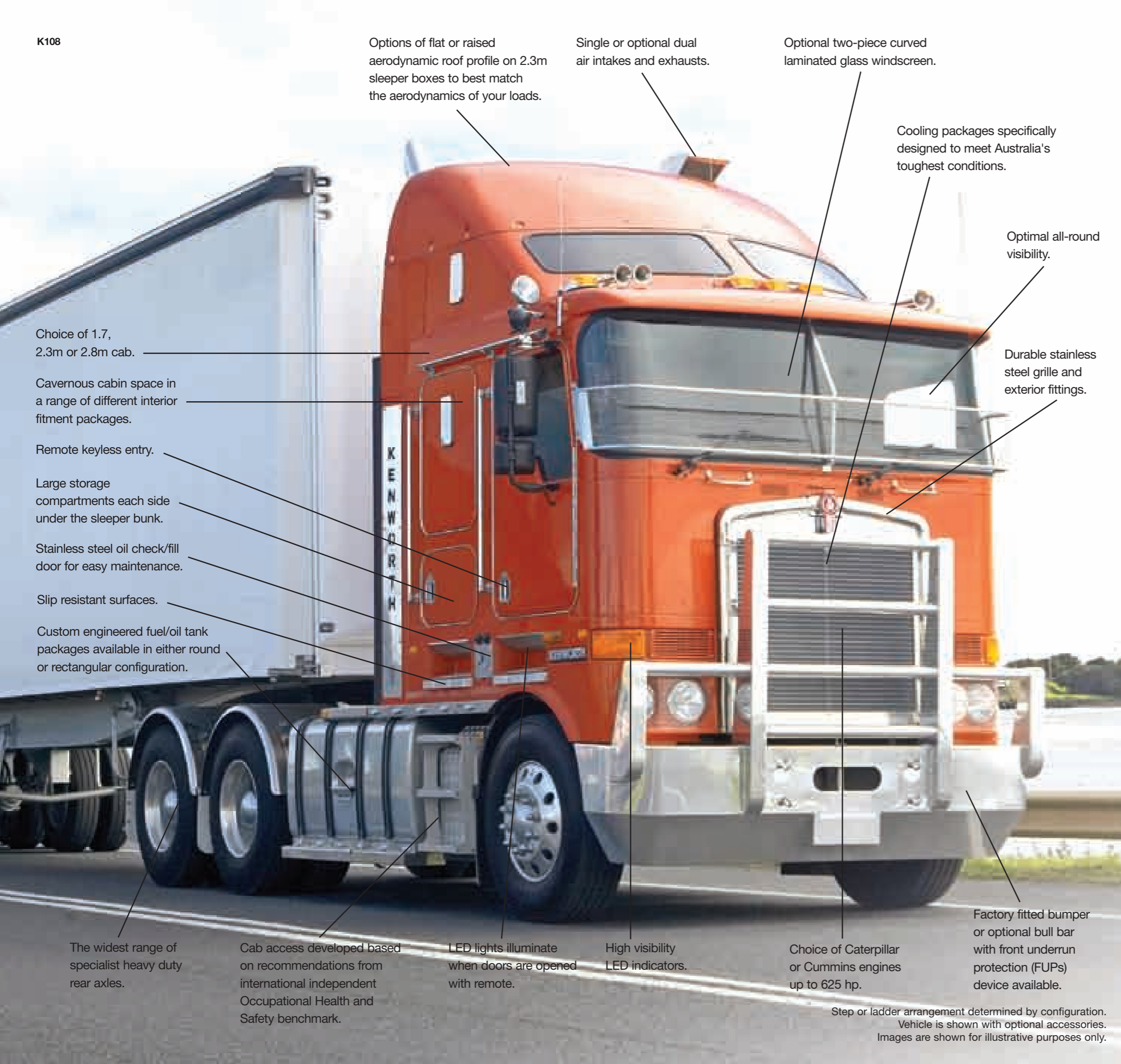


K108



**AUSTRALIAN MADE.
WORLD'S BEST.**



Options of flat or raised aerodynamic roof profile on 2.3m sleeper boxes to best match the aerodynamics of your loads.

Single or optional dual air intakes and exhausts.

Optional two-piece curved laminated glass windscreen.

Cooling packages specifically designed to meet Australia's toughest conditions.

Optimal all-round visibility.

Durable stainless steel grille and exterior fittings.

Choice of 1.7, 2.3m or 2.8m cab.

Cavernous cabin space in a range of different interior fitment packages.

Remote keyless entry.

Large storage compartments each side under the sleeper bunk.

Stainless steel oil check/fill door for easy maintenance.

Slip resistant surfaces.

Custom engineered fuel/oil tank packages available in either round or rectangular configuration.

The widest range of specialist heavy duty rear axles.

Cab access developed based on recommendations from international independent Occupational Health and Safety benchmark.

LED lights illuminate when doors are opened with remote.

High visibility LED indicators.

Choice of Caterpillar or Cummins engines up to 625 hp.

Factory fitted bumper or optional bull bar with front underrun protection (FUPs) device available.

Step or ladder arrangement determined by configuration. Vehicle is shown with optional accessories. Images are shown for illustrative purposes only.

Kenworth's K108 provides the best performing and most flexible cab-over choices in Australian trucking.

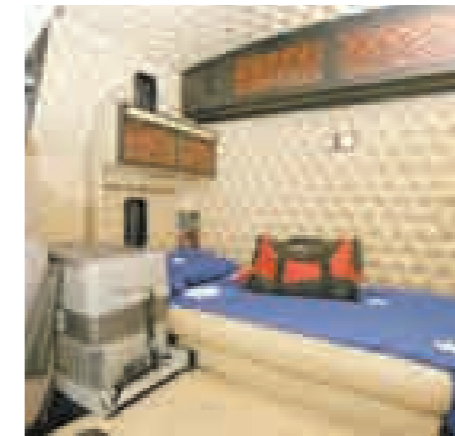
Ideal for single trailer, 25m or 26m B-Double and B-Triple applications, the K108 is also available in twin-steer configuration for high front axle load operations and with flat or Aerodyne roof variants.

Designed and developed in Australia for the harshest operating conditions, the K108 offers the highest levels of comfort and safety as well as optimum reliability, durability and performance.

K108



Aftermarket accessories shown.



Accessibility

Easy entry and exit

Driver health and safety as well as comfort have been a high priority in the K108's design.

Handy grab handles, combined with wider, lower extending steps, slip resistant surfaces, a higher set door and additional foot wells which are automatically illuminated when the doors are remotely unlocked, all set new standards in ease of entry and exit, and meet international ergonomic benchmarks.

Performance

The K108 2.3m Aerodyne combines maximum aerodynamic efficiency with optimum cabin space and trailer capacity. This makes it ideal for B-Double and B-Triple applications.

The integrated sun visor and the addition of a roof-mounted deflector when applicable further improve efficiency.

Low tare weight through the application of advanced fibreglass and aluminium construction techniques leads to higher payloads and increased productivity.

Space and luxury

If maximum cabin space is the priority, the K108 2.8m Aerodyne model provides the ultimate in comfort and luxury for those very long hauls.

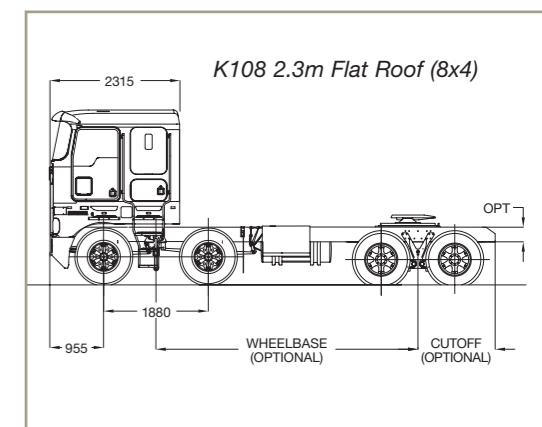
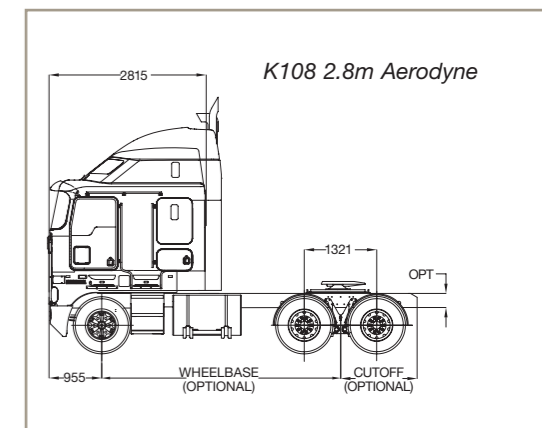
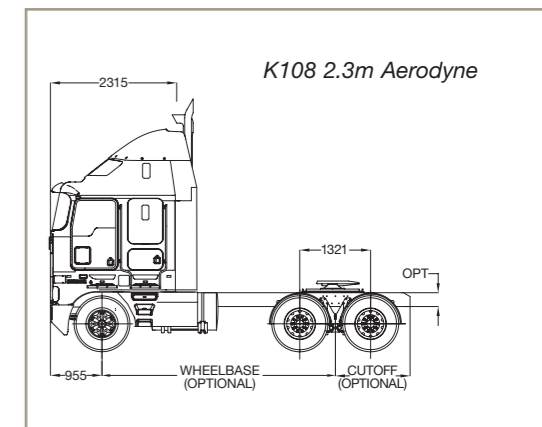
It combines the latest technology with the option of single or twin bunks for two-up driving.

The high roof and dual vista windows provide extra headroom and good natural light.

There is plenty of storage room with overhead lockers and shelves, and a refrigerator can be securely mounted behind the driver's seat on the slide-out tray.

Flexibility and versatility

Mining, logging and other heavy-duty haulage operations often require high front axle load capability. No problem for the K108 Kenworth, which can be optioned with twin steer axles.



From 1 January 2008, all trucks manufactured for Australia have to meet the new ADR83/00 standards for noise emissions and ADR80/02 standards for exhaust emissions. Kenworth has responded to these challenges with tens of thousands of local engineering hours and in excess of two million test kilometres. We have met these new emissions standards whilst still satisfying customer demands for continual improvements in power, fuel economy and productivity.

Best power options

Kenworth K108s offer the world's best high performance engine technology.

Cummins engines ranging from the 450hp ISX EGR to the 615hp Signature EGR are available. Alternatively, Caterpillar ACERT from the 470hp C13 through to the 625hp C15 can be selected.

Comfort, safety and convenience

The physical well being of the driver, safety on the road and ease of operation are imperatives in the design of the K108.

A wrap-around dash delivers an excellent view of all instruments, which include three warning light clusters, and the rocker type switches are simple

to operate. The optional adjustable steering column further enhances comfort and safety.

The large, deep, curved two-piece or optional one-piece windscreens, combined with daylite doors and optional peeper windows provide excellent visibility and safety. The air-cooled double-skin engine cover reduces cabin heat and noise, further enhancing driver comfort.

Other cabin improvements include extra storage spaces, such as coin and mobile phone storage.

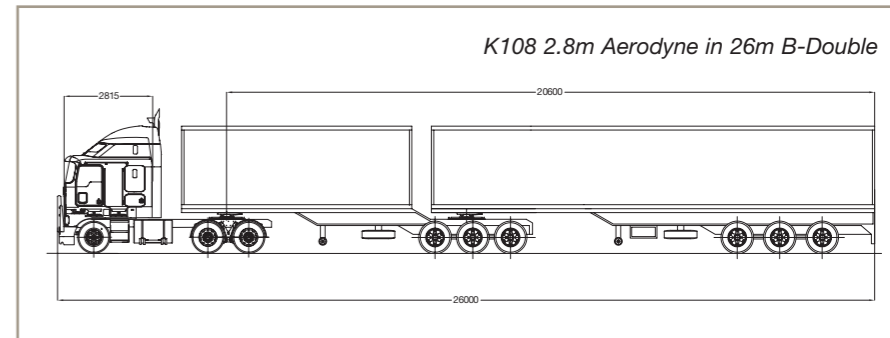
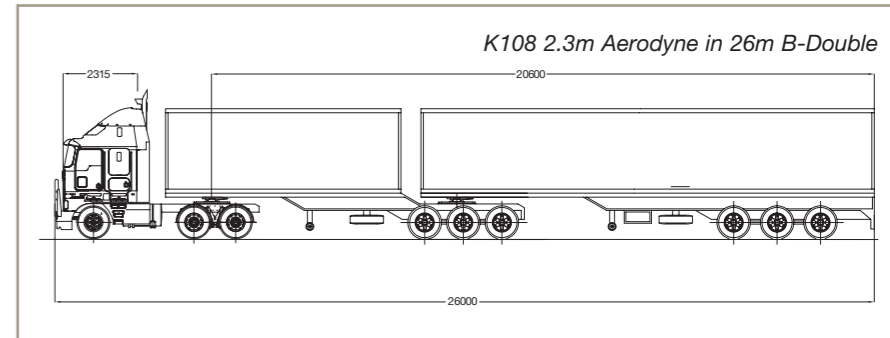




The ideal 26m B-Double solution

The K108, in both the 2.3m and 2.8m cab configurations, is the ideal choice for your 25m or 26m B-Double operations. It provides the ultimate in flexibility, allowing you to carry compliant B-Double trailer sets with the confidence of remaining within length and weight requirements. The K108 offers this flexibility whilst delivering up to 625 horsepower and 2050lb/ft torque, maximum fuel carrying capacity of up to 1680 litres with superior trailer space.

The K108 2.8m cab variant has been designed and built in Australia specifically for the 26m B-Double market. It offers the additional advantages of maximum cabin space and superior driver environment, all within the 26m envelope.



K108 Flexibility